

Spring 2019

## Eileen Gray

Christopher Kelly

*University of Central Florida, Christopherkelly11@knights.ucf.edu*

Diana Azbenova

*University of Central Florida, dianaazb17@knights.ucf.edu*

Nicole Mourad

*University of Central Florida, nicole\_mourad@knights.ucf.edu*

Jonathan Roebke

*University of Central Florida, jonathanroebke@knights.ucf.edu*

Jake Wardell

*University of Central Florida, jajion97@knights.ucf.edu*

Find similar works at: <https://stars.library.ucf.edu/arc3743-final>

University of Central Florida Libraries <http://library.ucf.edu>

This Project is brought to you for free and open access by the ARC 3743 Projects at STARS. It has been accepted for inclusion in ARC3743 Final Projects by an authorized administrator of STARS. For more information, please contact [STARS@ucf.edu](mailto:STARS@ucf.edu).

---

### Recommended Citation

Kelly, Christopher; Azbenova, Diana; Mourad, Nicole; Roebke, Jonathan; and Wardell, Jake, "Eileen Gray" (2019). *ARC3743 Final Projects*. 2.

<https://stars.library.ucf.edu/arc3743-final/2>







## **Eileen Gray** 1878 - 1976

“To create, one must first question everything.”

Christopher Kelly  
Diana Azbenova  
Nicole Mourad  
Jonny Roebke  
Jake Wardell



The Gray Family, Eileen is on her mothers lap



Eileen Gray, 19 years old, 1897



Eileen Gray, 1910



Example of a class Gray would have attended





Early work in Art Nouveau idiom  
with elements of Symbolism.

1913. Salon des Artistes Decorateurs.

Le Destin Lacquer Screen.  
1914, Paris, France.





Lotus Table, 1914



Sirene armchair, 1923.



## Brick screens by Eileen Gray



Originally the screens were designed as an extension of a wall treatment system. Square panels to give the wall texture and consistency that turn into moving screens as an effort to break up a long hallway and some long rooms to give them dividing walls.

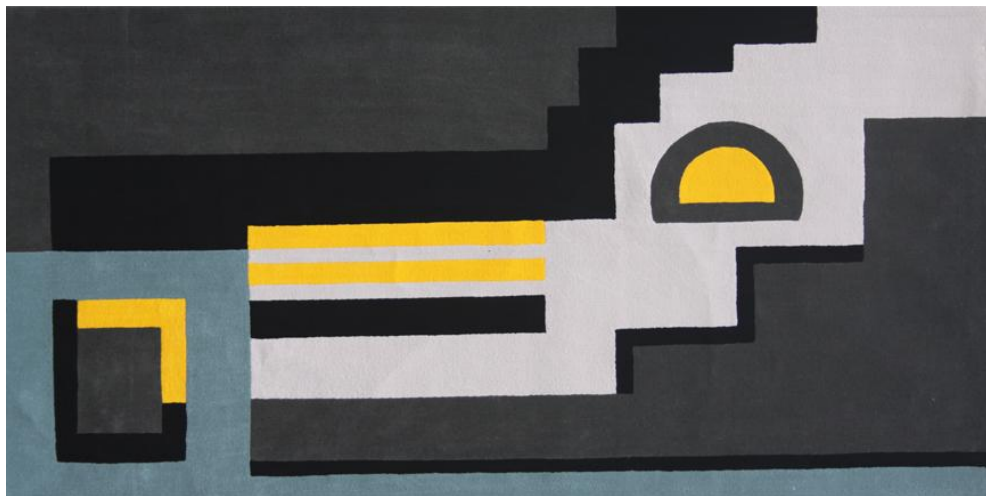


She made designs of her own furniture in the house E 1027, c.1929

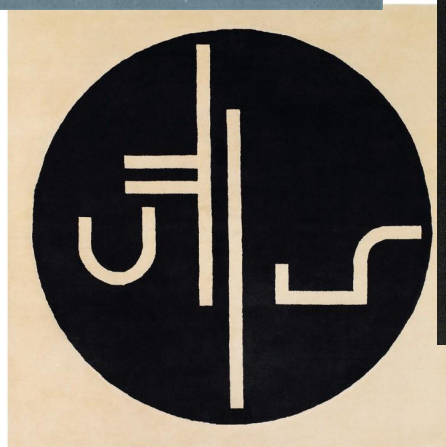


Much of the furniture of E 1027 continues the exploration of what tubular steel can do.

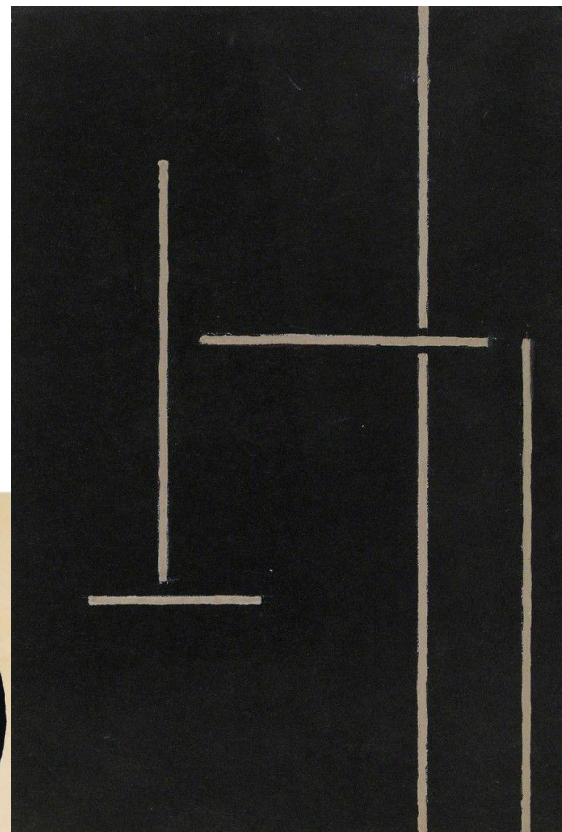




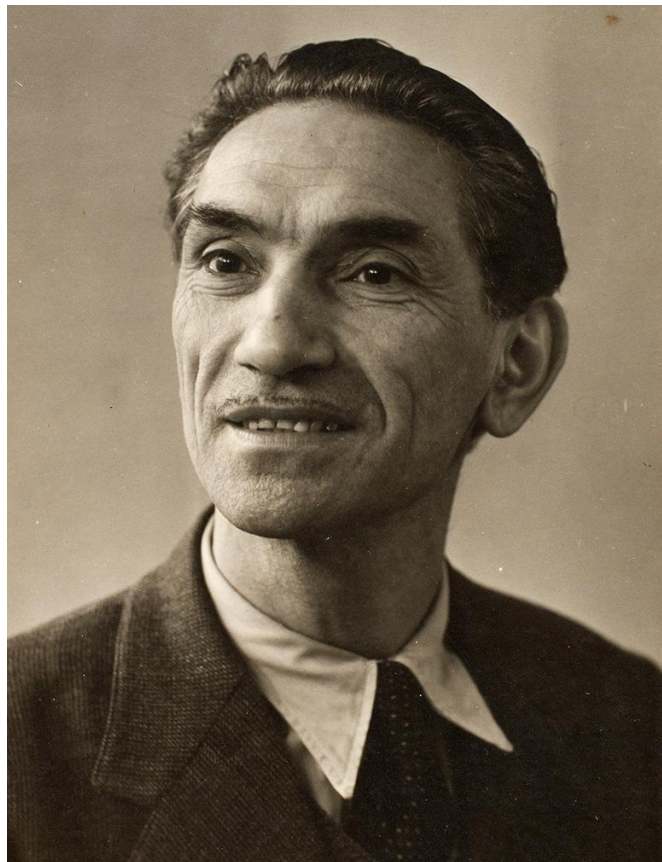
Protege Mainie Jellett



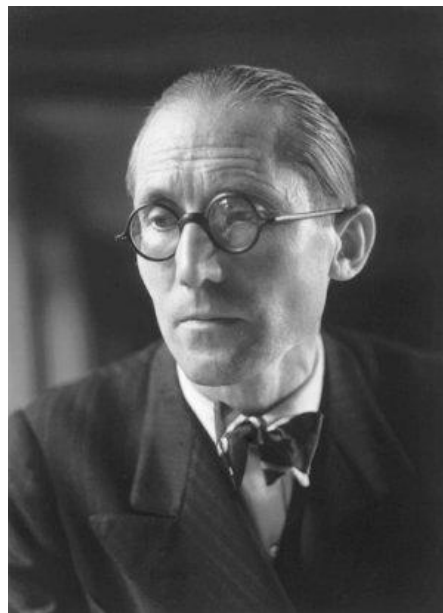
St. Tropez rug



Study for a Rug, 1920.



Jean Badovici



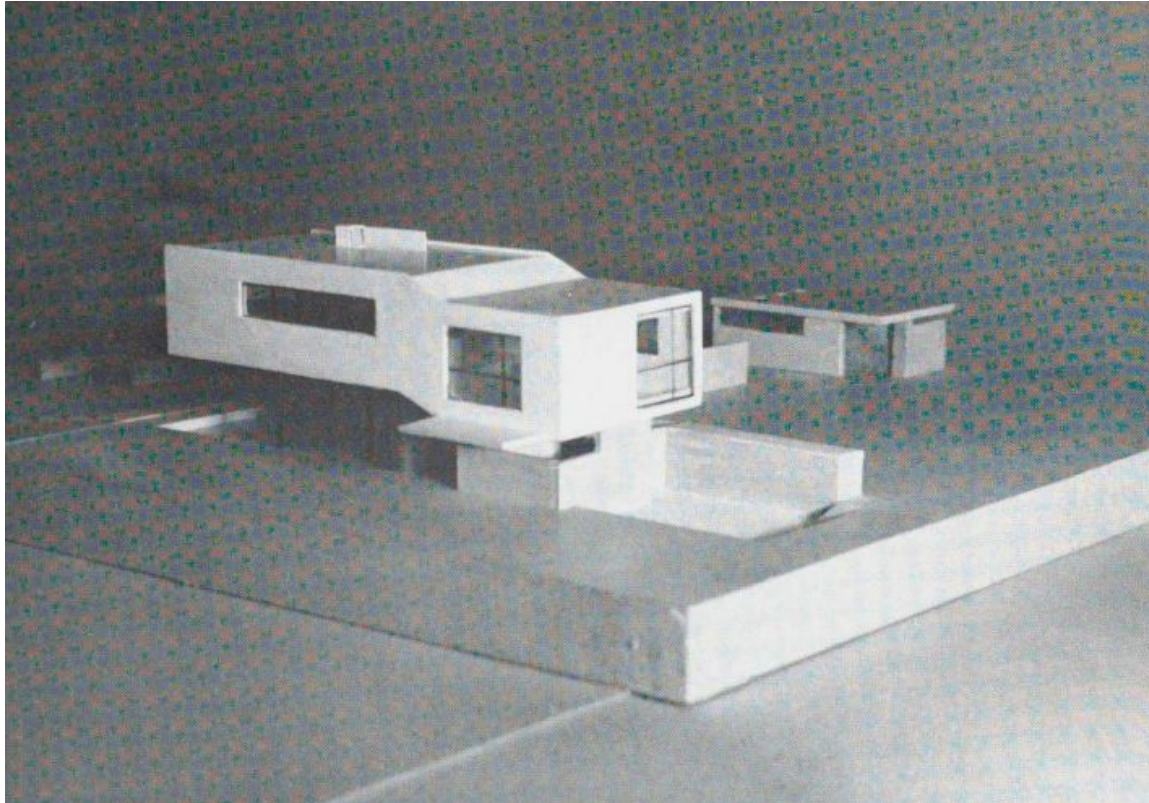
Le Corbusier



Walter Gropius

# **Significant Works**





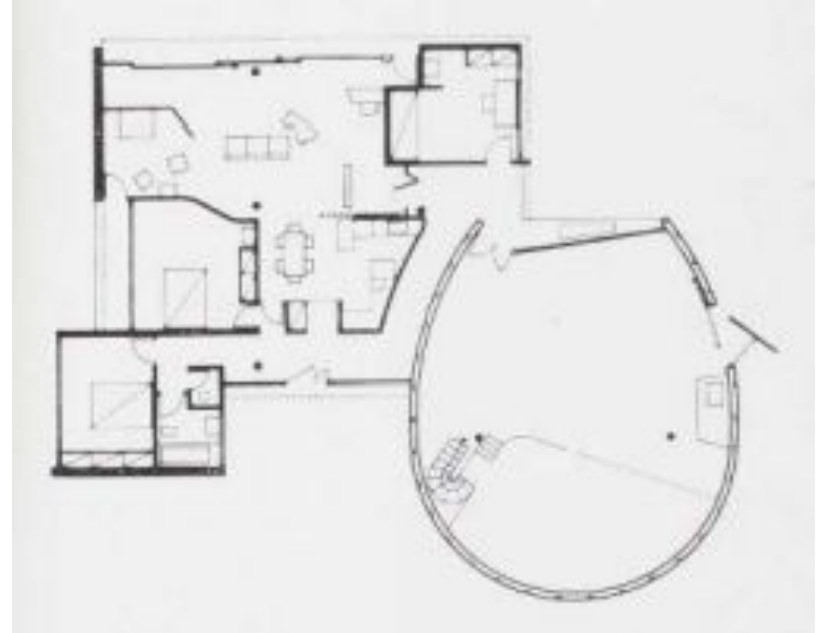
A 1926 project for a house for an engineer to be built in the Midi, unbuilt (Eileen Gray, Designer, n.d.)



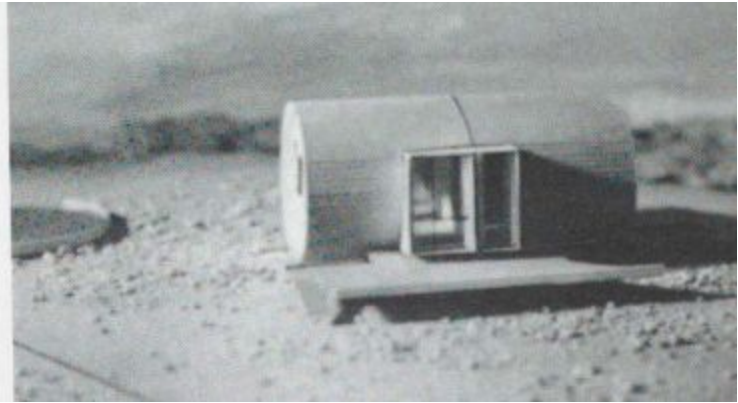
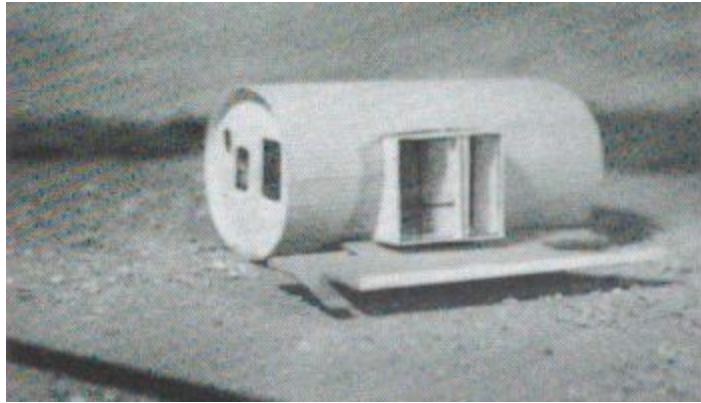
House for Two Sculptors, 1933, unbuilt (Eileen Gray, Designer, n.d.)



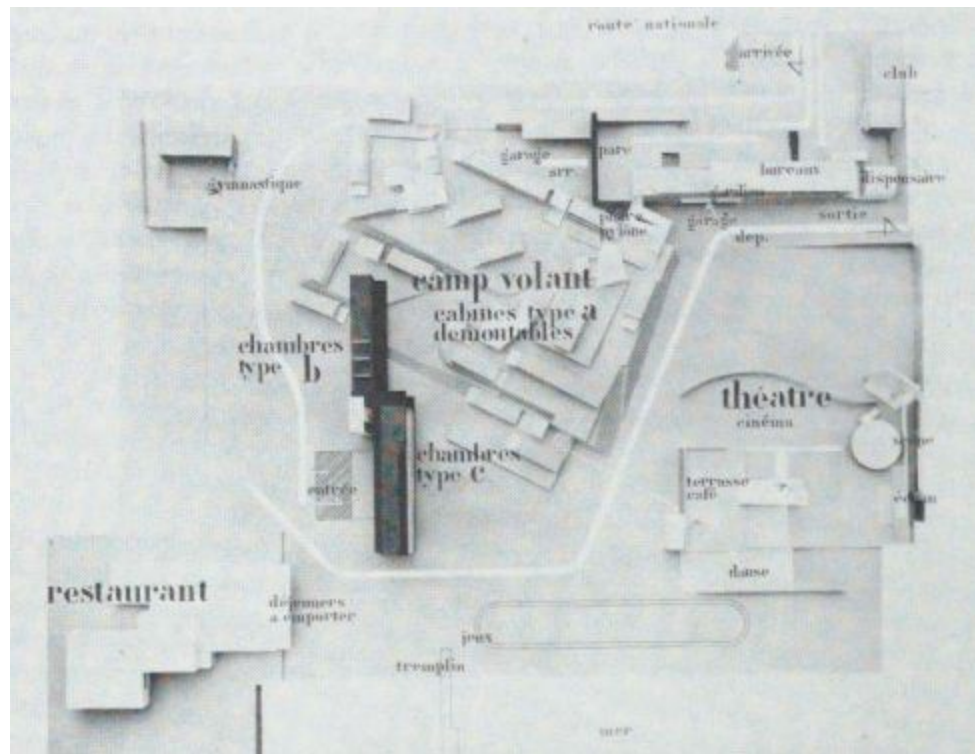
House for Two Sculptors, 1933, unbuilt (Eileen Gray, Designer, n.d.)



Plan (Eileen Gray, Designer, n.d.)

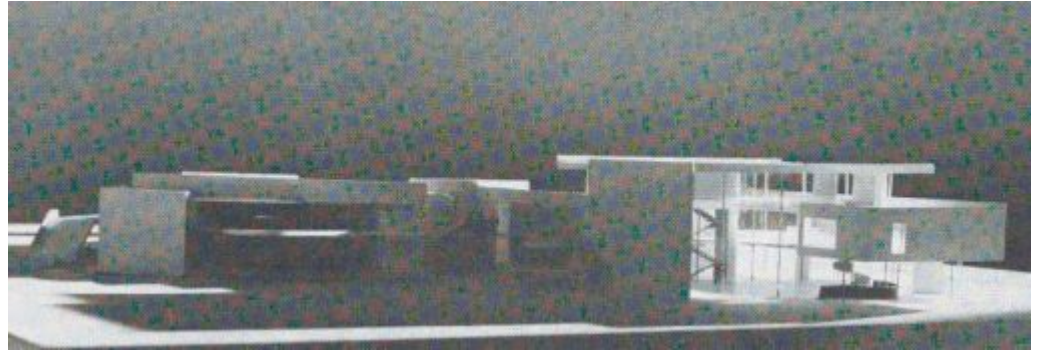
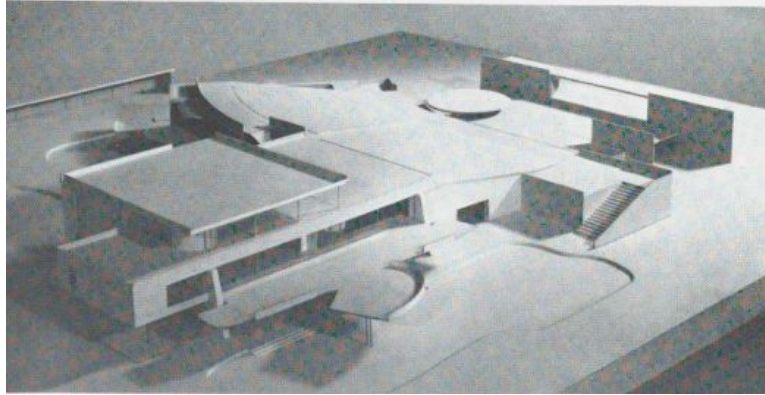
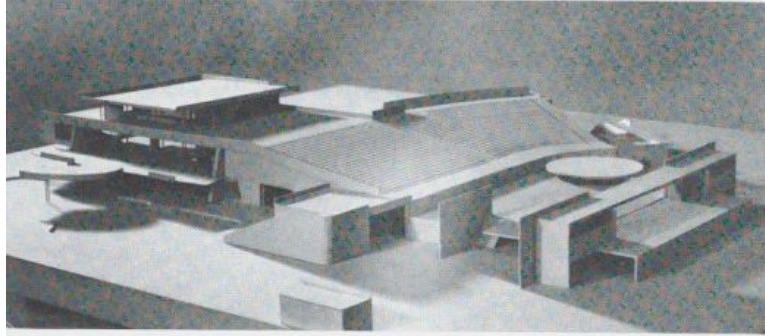


The Ellipse House, aka The Tube House, 1937, unbuilt (Eileen Gray, Designer, n.d.)



Vacation and Leisure Centre, 1936-37, unbuilt (Eileen Gray, Designer, n.d.)



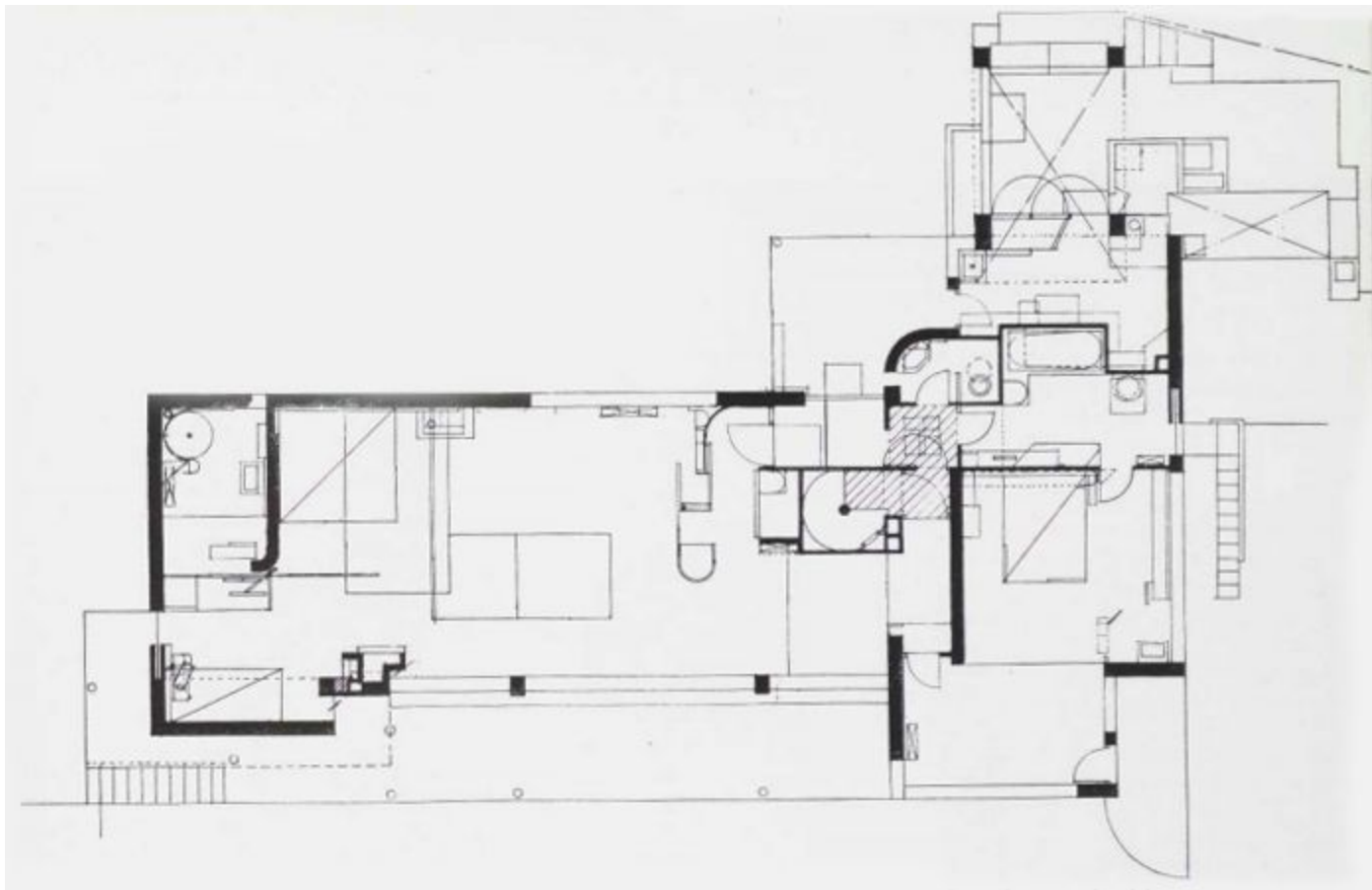


Cultural and Social Centre, 1946 to 1949, unbuilt (Eileen Gray, Designer, n.d.)





E. 1027, Roquebrune/Cap Martin, 1926-29 (Manuel Bougot, n.d.)



Plan of E.1027 (Stewart, J.J, 1979)



**“Even the furnishings should lose their individuality by blending in with the architectural ensemble.”**

- Eileen Gray



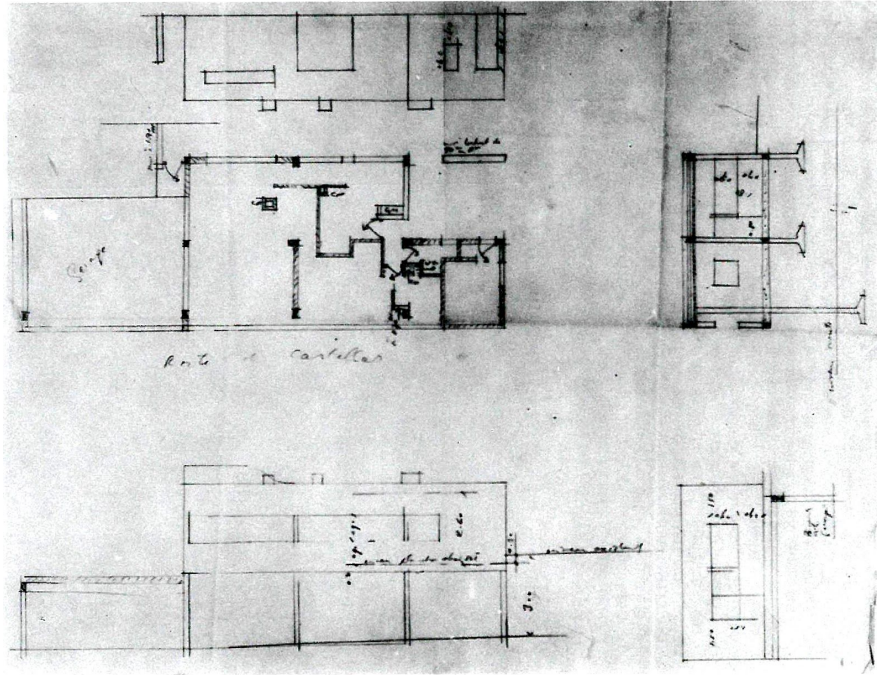




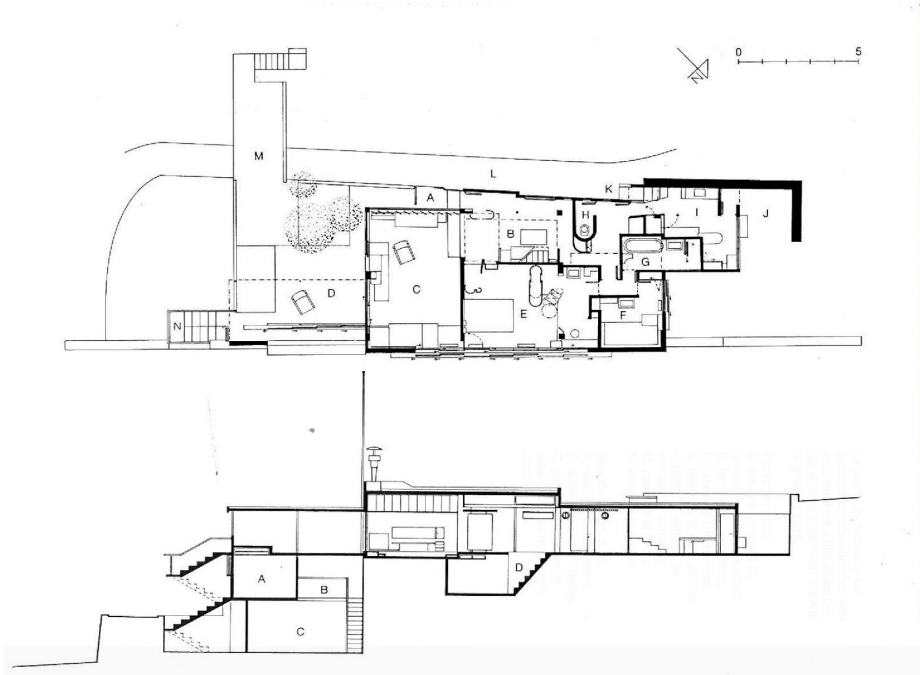
Am Rupenhorn, Hans and Wassili Luckhardt,  
Berlin, Germany (Gahl, 2015)



Tempe A Pailla, Menton, France, 1932-34 (Marta López García, 2017)



Floor Plan, sections and elevation by Eileen Gray, 1934



Plan and Section redrawn by Sefan Hecker and Christian F. Muller





Eileen Gray in her Paris home at the age of 97

# References

- Constant, C. (1994). E. 1027: The nonheroic modernism of Eileen Gray. *Journal of the Society of Architectural Historians*, 53(3), 265-279. <https://doi.org/10.2307/990937>
- Gahl, C. (2015). Han & Wassili Luckhardt, haus am rupenhorn, 1932. Retrieved from <https://rampages.us/gdtheory/tag/haus-am-rupenhorn/>
- Garcia, M. L. (2017) Gender resistance: Tempe à Pailla. Retrieved from <http://www.hiddenarchitecture.net/2017/07/gender-resistance-tempe-pailla.html>
- Goff, J. Eileen Gray: her work and her world. Ireland: Irish Academic Press, 2015.
- Griffith, R., Delidow, M., & McGlinchey, C. (2012). Peeling back the layers: Eileen Grays brick screens. *Studies in Conservation*, 57(Sup1). <https://doi.org/10.1179/2047058412y.0000000032>
- Gura, J. (2013). Eileen Gray. *Art + Auction*, 36(8), 125–128. Retrieved from <https://login.ezproxy.net.ucf.edu/login?auth=shibb&url=https://search.ebscohost.com/login.aspx?direct=true&db=asu&AN=94832223&cpidlogin.asp>
- Johnson, J. S. (1979). Eileen Gray, designer. United Kingdom: Debrett's Peerage for The Museum of Modern Art. Retrieved from [https://www.moma.org/documents/moma\\_catalogue\\_1797\\_300062622.pdf](https://www.moma.org/documents/moma_catalogue_1797_300062622.pdf)
- McQuillan, D. (2014) Eileen Gray, thoroughly modern maker. Retrieved from <https://www.irishtimes.com/life-and-style/people/eileen-gray-thoroughly-modern-maker-1.2015801>
- Parley, C. (2018). Eileen Gray: Une architecture de l'intime / Intimate architecture: Cap Moderne, Roquebrune / Cap Martin (in collaboration with the Centre Pompidou, Paris) June 21, 2017–October 31, 2017 (extended into 2018). West 86th: *A Journal of Decorative Arts, Design History & Material Culture*, 25(2), 269–272. <https://doi-org.ezproxy.net.ucf.edu/10.1086/702331>
- Ryan, D. J. Sunshine and shade in the architecture of Eileen Gray. *Architectural Science Review*, 53(3), 340-347. <https://doi-org.ezproxy.net.ucf.edu/10.3763/asre.2010.0028>

