

University of Central Florida

**STARS**

---

Curating across the Curriculum Workshops

Curating across the Curriculum

---

2017

## Curating Geospatial Data in the Study of the Past

Tiffany Earley-Spadoni  
*University of Central Florida*

Find similar works at: <https://stars.library.ucf.edu/curatingacrosscurriculum-workshops>  
University of Central Florida Libraries <http://library.ucf.edu>

This Other Presentation is brought to you for free and open access by the Curating across the Curriculum at STARS. It has been accepted for inclusion in Curating across the Curriculum Workshops by an authorized administrator of STARS. For more information, please contact [STARS@ucf.edu](mailto:STARS@ucf.edu).

---

### STARS Citation

Earley-Spadoni, Tiffany, "Curating Geospatial Data in the Study of the Past" (2017). *Curating across the Curriculum Workshops*. 1.  
<https://stars.library.ucf.edu/curatingacrosscurriculum-workshops/1>



# Curating Geospatial Data in the Study of the Past

Tiffany Earley-Spadoni  
Assistant Professor  
The University of Central Florida  
tiffany.earley-spadoni@ucf.edu  
Image: the Vayots Dzor Fortress Landscapes Project, Armenia



# Technology and the Study of the Past: Using Geospatial Data to Tell Stories



Above: Janus, Vatican Collection



# Vayots Dzor Region

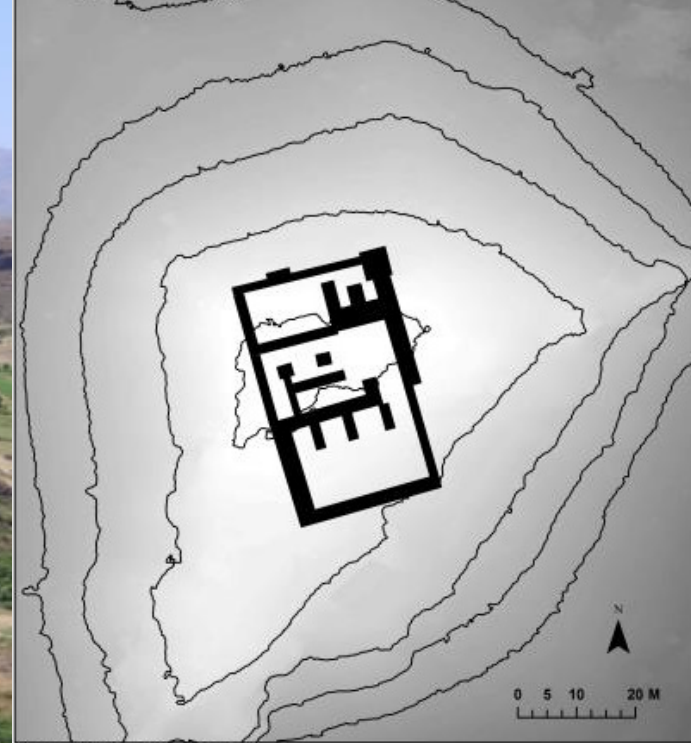


Image: Dr. Tiffany Earley-Spadoni  
Vayots Dzor Fortress Landscapes Survey Project  
5 Meter Contour Intervals



# Overview

---

- I. Ways to Experiment:
- II. Deep Mapping
- III. Digital Storytelling
- IV. Data Visualization
- V. Culminating Project



# Conventional Maps: an Old Technology




Plan of the city of Nippur, Iraq  
c. 1500 BCE



Map of the World  
Sippar, Iraq  
6<sup>th</sup> c. BCE  
British Museum

# Deep Mapping



RICES  
MOSAIC INTERFACE™  
SEARCH. ANALYZE. VISUALIZE. LEARN.

[About](#) [FAQ/Tutorials](#) [Quick Tour](#) [Archive](#) [Add Your Story](#) [Accessibility](#) [Contact](#)

Welcome tiffanyspadoni [My Account](#) [Logout](#)

[Search](#) [Browse](#) [Bookbag \(0\)](#) [Featured](#) [Results](#)

Florida Historical Quarterly, Ep. 19

Bryan Simpson United States Courthouse, Jacksonville, Florida

Sam M. Gibbons U.S. Courthouse, Tampa, Florida

Florida South Railway Map

Candler, Florida

Brownville, Florida

Nocatee, Florida

Gainesville, Florida

Palatka, Florida

Francis, Florida


McIntosh, Florida

Punta Gorda, Florida

Cleveland, Florida

Florida South Railway Map 1888-01-01 to 1888-12-31

[Twitter](#) [Facebook](#) [Tumblr](#) [Email](#)



A map of Florida showing the Florida South Railway's land grant, published in 1888. The map includes information about towns along the railway, facts about Florida, and hints for potential immigrants. The Florida Southern Railway was established in 1891 when it took over the Gainesville, Ocala and Charlotte Harbor Railroad. Facing foreclosure, the line was acquired by Henry B. Plant (1819-1899) as part of his Plant System in 1892 and reorganized as the Florida Southern Railroad, which stretched from Gainesville to Ocala and then to Punta Gorda. In 1903, the Florida Southern was acquired by the Atlantic Coast Line Railroad (ACL). The ACL merged with the Seaboard Air Line Railroad (SAL) in 1967 to form the Seaboard Coast Line Railroad (SCL). Much of the original ACL lines are now part of the CSX Transportation line.

Connections (Suggested Items)

Select Criteria

General

Florida South Railway Map

History of Central Florida Podcast

Florida South Railway Map

Spanish Influence Town Names

Letter from Trafford to Sanford (Nov. 21, 188...

All-Stars Ballot

Baseball Schedule

Dinky Line


Volusia County Railroad History Podcast

Dakin Family at the Racimo Plantation

Dakin Family by Bettye Reagan

Indian Canoes Podcast

Map Satellite



Google

Map data ©2017 Google imagery ©2017 TerraMetrics [Terms of Use](#) [Report a map error](#)

The RICHES Public History project at University of Central Florida

<https://riches.cah.ucf.edu/>



# Deep Mapping: ESRI's Story Maps



A 3D map of Earth showing urban expansion. The landmasses are covered with yellow and orange patches, indicating areas of urban growth. The map is viewed from a perspective that shows the Americas, Europe, and Africa.

A Story Map Journal    

## Concrete Jungle: Urban Expansion and the Rise of the Megacity

---

### Where do we live?

This is Earth. With a population nearing 7.5 Billion, it's no wonder that we have had a significant impact on our planet's surface. Earth's population has been and is **growing**. This year alone, 75 million new people are expected to be added to the population, which means 75 million new people will need a place to live.

These realities lead us to consider the question: Where can we find space on this planet to call our own?

Early humans were nomadic, wandering the land in search of food and safety. With the onset of the agricultural revolution, people were soon able to survive in a single location. Foregoing the nomadic lifestyle of our ancestors, we began to seek safety in group settlements. This development led to the birth of the first villages, towns, and cities. Continuing into the modern day, it seems that this trend is here to stay.

In fact, for the first time in human history, more



# Digital Storytelling

## Cultural Landscapes of the Irish Coast Research Project

### Cromwell's Barracks

Cromwell's Barracks (below) is a star-shaped fort built by the Cromwellian regime around 1652. The fort is probably built on top of an earlier fortification, parts of which have been incorporated into the later fort. The English Statute of 1585 declared the Catholic clergy guilty of high treason, and the fort was used to imprison captured priests before they were transported to the West Indies and other

colonies. After the restoration of Charles II to the throne in 1660, the structure was used as a defensive outpost during the Jacobite and Williamite Wars. This watchpost on the islands allowed the British to monitor the coast for French privateers. Today the ruined structure is a reminder of a colonial past that Inishbofin has left behind.




#### Highlights

- A star-shaped fort built during Cromwell's regime in the 17th century
- Built atop ruins of an earlier 16th-century building
- Though most have been robbed out over the years, the finely cut cornerstones of the fort's towers are made of limestone from the Aran Islands
- Illustrates the military importance of islands along the west coast

Kuijt, I., Donaruma, W., Shakour, K., Burke, T., 2015. *Island Places, Island Lives: Exploring Inishbofin and Inishark Heritage, Co. Galway, Ireland*. Wordwell Books, Dublin.

# Digital Storytelling



Cromwell's Barracks is a star-shaped 16th century fort built to protect the main Inishbofin harbour and to control sea trade along western Connemara.



00:33





# Digital Storytelling



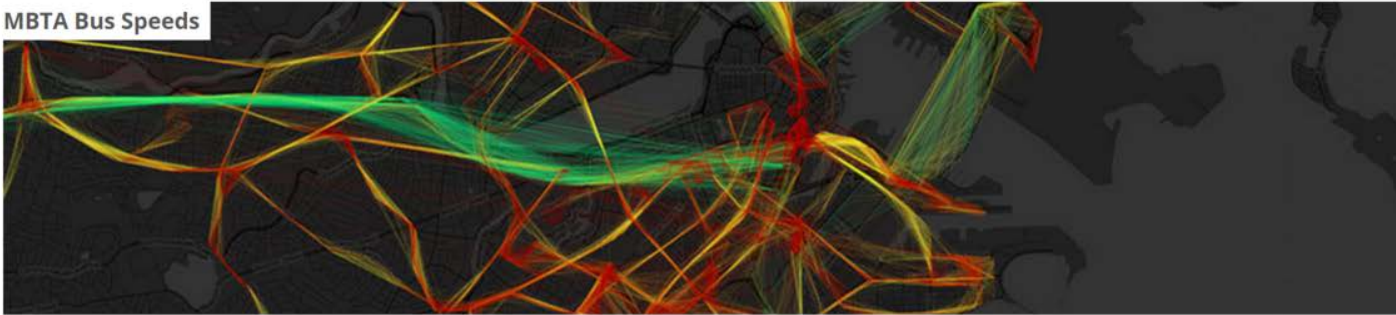
Protected by thick walls, large cannons covered the entrance of the harbour, one of the best deep-sea anchorages on the west coast of Ireland.

01:29

02:05

# Data Visualization

MBTA Bus Speeds



ANDY WOODRUFF

A Typographic Map of the World



ANDREW E. BURGESS

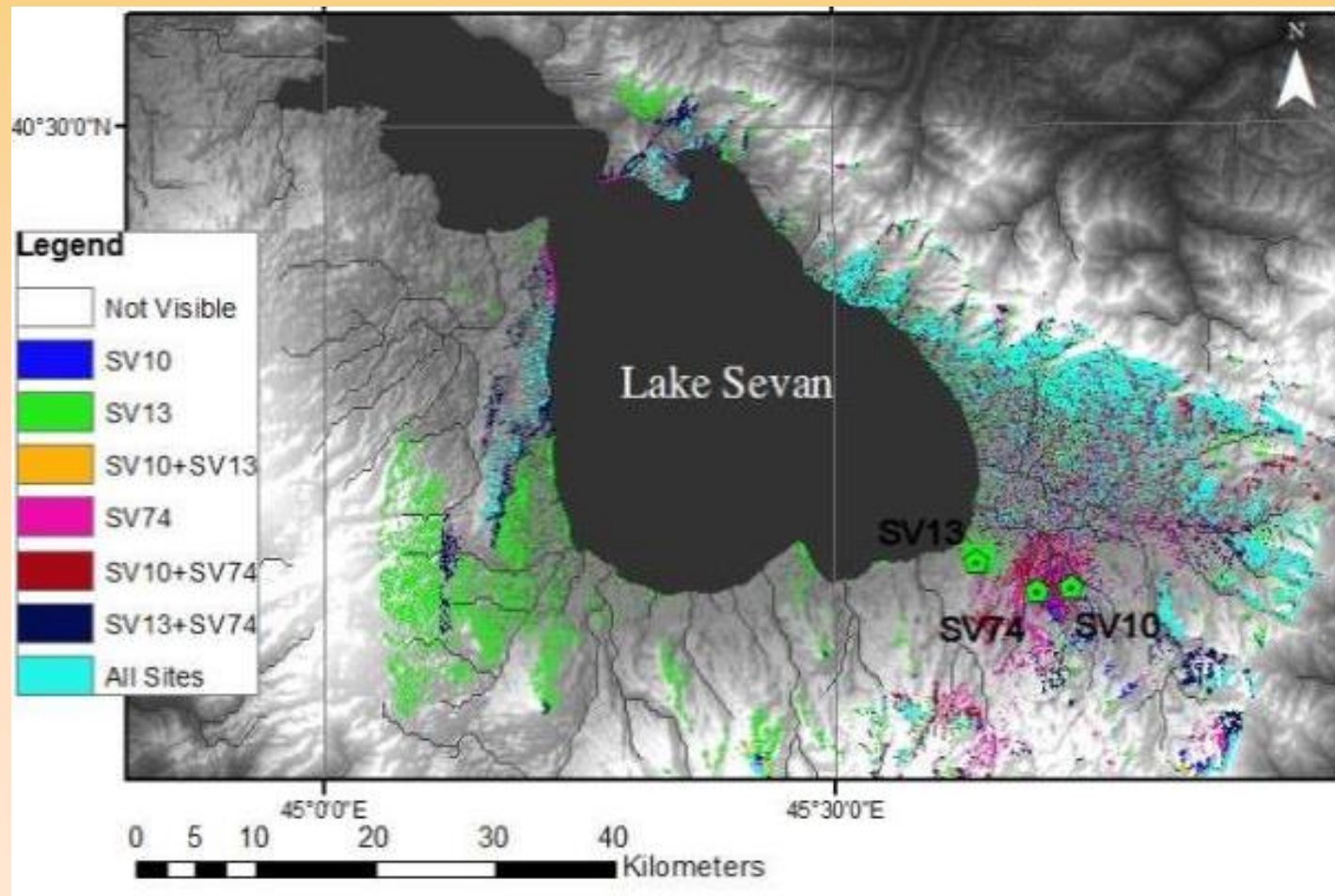
Digital Woodcut



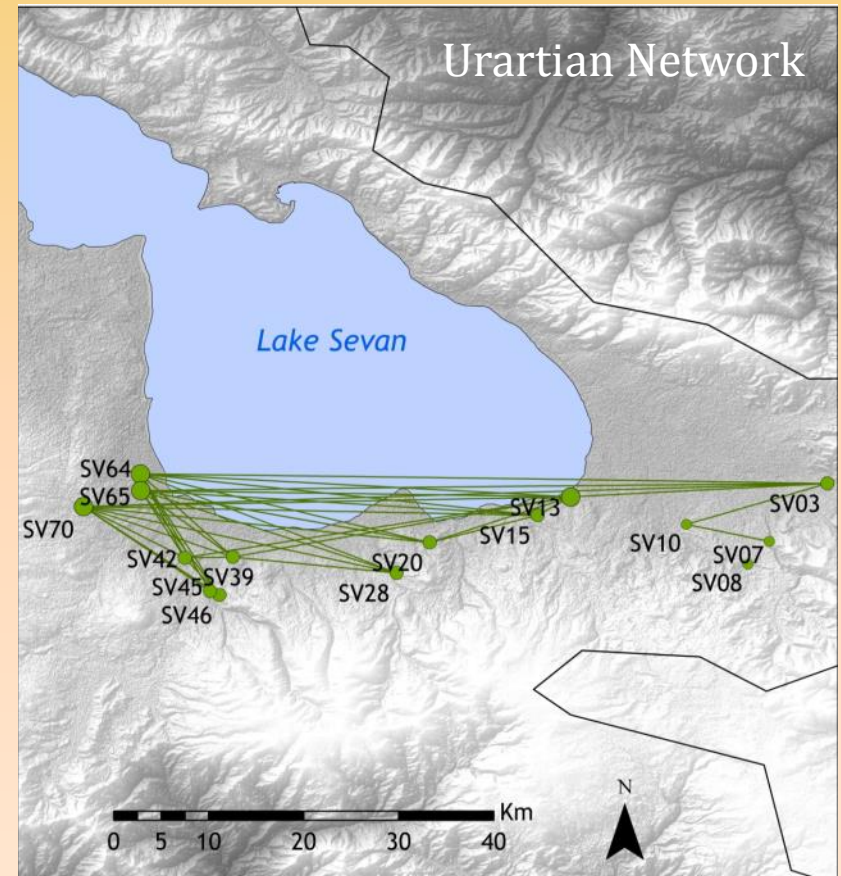
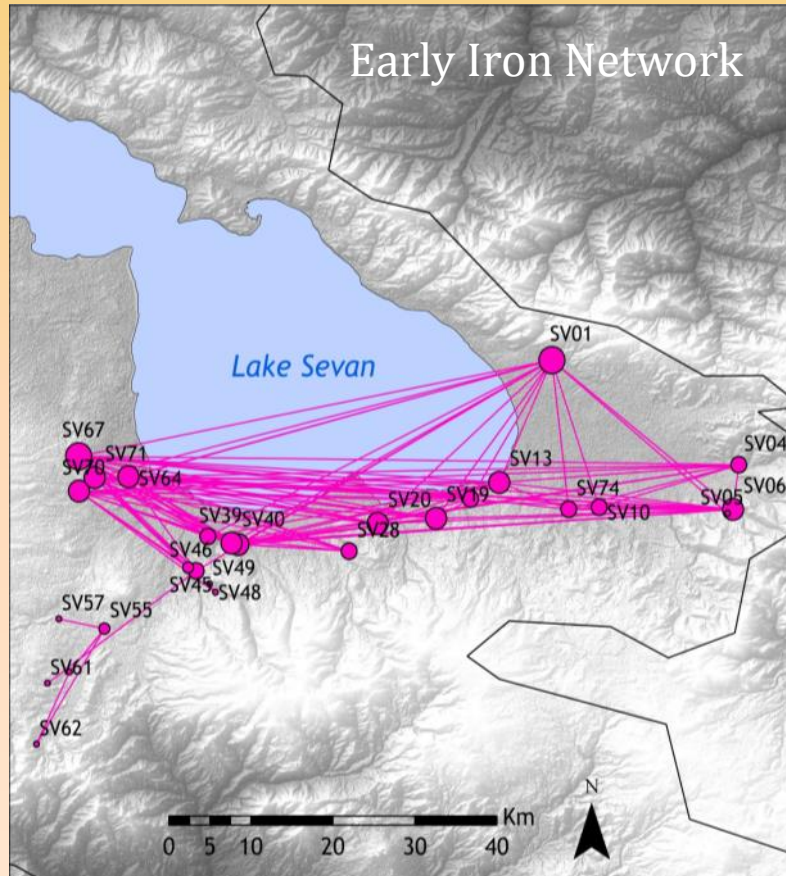
ELEANOR LUTZ - MAPBOX



# Data Visualization



# Data Visualization: Intervisibility Networks



Earley-Spadoni, T. (2015). "Landscapes of Warfare: Intervisibility Analysis of Early Iron and Urartian Fire Beacon Stations (Armenia)." *Journal of Archaeological Science: Reports* 3: 22–30.



# Digital Projects Roundtable

November 2-4, 2017  
Orlando, Florida



# The Beginning in the End



Above: Janus, Vatican Collection