

University of Central Florida

STARS

Central Florida Future

University Archives

3-6-1970

Central Florida Future, Vol. 02 No. 19, March 6, 1970

Florida Technological University



Part of the [Mass Communication Commons](#), [Organizational Communication Commons](#), [Publishing Commons](#), and the [Social Influence and Political Communication Commons](#)

Find similar works at: <https://stars.library.ucf.edu/centralfloridafuture>

University of Central Florida Libraries <http://library.ucf.edu>

This Newspaper is brought to you for free and open access by the University Archives at STARS. It has been accepted for inclusion in Central Florida Future by an authorized administrator of STARS. For more information, please contact STARS@ucf.edu.

Recommended Citation

Florida Technological University, "Central Florida Future, Vol. 02 No. 19, March 6, 1970" (1970). *Central Florida Future*. 49.

<https://stars.library.ucf.edu/centralfloridafuture/49>

Hum. & Soc. Sci. Split Seen

We Live in the Present,
By the Past, but
for the...



Vol. 2 No. 19

FTU, Orlando, Florida

March 6, 1970

Official Announcement Is Anticipated Soon

Informed sources told the FuTure last week that the College of Humanities and Social Sciences was going to be divided into two separate colleges. The split is allegedly going to take place early in July, at the beginning of the new fiscal year.

The division was announced at a faculty meeting March 3 by Dean Micarelli but has not yet been officially released by the University. The move will have to be approved by the Board of Regents before it is final but sources indicate that it will be approved.

The majority of the chairmen of the various departments in the existing college have agreed that the split will be beneficial. It is designed to cut the size of the existing college into two colleges of fairly manageable size.

One source indicated that H&SS will have 81 faculty members by the spring quarter and would grow to well over 100 by the fall quarter, building quickly into a college too large to effectively run.

A Committee will be set up to decide which departments will be in which college. Indications were that the two new colleges will be called "The College of Social Sciences", and the "College of Behavioral Sciences."

There seemed to be some

desertion within the present college as to whether the split should be carried out or not but no formal complaints had reached the FuTure as of this writing.

Several professors told their classes of the upcoming move but there have been no official statements and as of Wednesday there were even members of the president's staff who had not heard of it. An official release should come sometime around the end of March after the Board of Regents meeting on the 19th.

The split would give FTU six colleges and brought speculation from several professors as to whether the splitting would end with H&SS. There were guesses that FTU would soon have as many as eight to ten colleges to serve the students.

Bookstore Grosses Half-Million

Since the bookstore on campus first opened its doors in October of 1968 it has done a business with gross sales reaching "some where around half a million dollars," according to Ian Maxwell, manager of the bookstore.

Some idea of the volume of business in books alone can be determined from a look at the inventory for the upcoming Spring quarter. Four hundred new textbook titles are in stock or underway from publishers. Paperbacks ranging from light fiction to heavy reference material number 2,600 titles. There also is a complete Black Studies inventory, which includes a 25-book paperback series.

Also in stock are the customary jackets, mugs, jewelry, T-shirts, ash trays, pennants, stickers and notebooks—all emblazoned with the FTU seal.

The bookstore is considered the official "keeper of the seal." As such, it controls who and what shall be permitted to use the seal, and collects a royalty from users which in turn goes into FTU's scholarship fund.

The money earned by the bookstore from all of its enterprises goes separate ways. A big slice—\$50,000 a year—goes to the state, which loaned FTU the funds necessary to get the operation started. Some of the money—"we're profit-oriented and self-sustaining," Maxwell explained—goes into a fund created to expand bookstore services as FTU grows. Plans call for satellite stores around the campus. Out of the profits also come salaries for 10 fulltime employees and six student assistants, utility costs, and rent.

Pollution Teach-In

Pollution is a dirty word.

So what can an FTU student do about it? Or, for that matter, what FTU student, living in Sunny Florida would want to do anything about it?

That's what a local group of businessmen are wondering this week. They are members of the Audubon Society, the Sierra Club and other wildlife and conservation groups. They are trying to find out if there are students at FTU who care enough in the pollution around us to organize a campus Environmental "Teach-In" on April 22.

FTU won't be alone if it does get a teach-in started. In fact, the university might be alone if it doesn't. A college-oriented national teach in has been planned for April 22 on almost every campus in the nation. Locally Rollins, Valencia and other schools are participating.

If an FTU group is organized, either separately, or in conjunction with a department at the university, the national clubs and supporting organizations will supply speakers and material for the day, which is designed to show the country that students are concerned with the condition of the world.

Anyone on campus interested in organizing an FTU group for the Teach-In should contact Hal Scott, treasurer of the Florida Audubon Society in Orlando at 841-2250.



FLOWER POWER can do wonders. Three members of the Orange County Sheriff's Dept. attending the rock festival at the Orlando Sports Stadium last weekend show that they came in peace. The 5,000

young people attending the concert behaved themselves beautifully. So did the fuzz. See pictures more pictures and story on Pages 6-7.

SG Suffers From Apathy Due To Five Vacant Seats

There are presently five unfilled positions in Student Government.

Three of these vacancies are senators seats. The other two are the Junior Class president and the Governor of Education. The missing legislators are the Senior senator of Education, Senior senator of Natural Sciences, and the Junior senator of Humanities. These three senators from a senate of 26, comprise almost 15% vacancy, with another 10-20% of the senate absent weekly. This leaves nearly one-fifth of the student body completely defranchised, while the Student Government's objective is to represent all of the students.

The Student Government has made an attempt for a working senate. About one month ago, S.G. passed a statute which states: if a senator accumulates six or more excused absences or three unexcused absences or is tardy six or more times, he will be suspended

from office. This statute also holds true for class presidents and college governors, except that they are allowed up to four unexcused absences.

When a legislator resigns or is suspended from office, the president of S.G. appoints replacements which are put before the senate for approval, and if after looking over his qualifications the senate approves, the replacement may then assume his official duties. Out of the five legislators, two were suspended by the absense statute and they were Senators Drenna Bohn and William Finch.

Scholarship Decision Will Be Delayed Until Spring

In an interview with Dean Calvin Miller, Dean of the College of Education, the FuTure discovered that there would not be a decision made on the feasibility of offering athletic scholarships at FTU until sometime in the Spring quarter. Miller said that he was asked by the President to hold a meeting with his athletic staff and several other professionals and recommend to the Executive committee what type of inter-collegiate athletics they felt the University should pursue.

Miller said that his committee was responsible simply for a suggestion to the Executive committee, and the final decision would be made by the President.

"The recommendations will be as to the extent of our athletics, and not whether we should offer scholarships, or not," Miller said, "If we suggest to the President we want to play Notre Dame in two years, we are going to need to give bigger and better scholarships than if we just want to play Rollins and Florida Presbyterian."

Once Miller's committee meets, which Miller promised would be in the "near future" the ideas will be presented to the President's Executive committee, which in turn will deliver its suggestion to the President who will make the final decision.

No More Parking On VC Sand Lot

Recently the FuTure discovered that several FTU students are going to lose their prize parking places by the end of this week. Captain John Smith of the security force on campus told the FuTure that the parking places behind the Village Center would be closed to students in the near future since many students are abusing the privilege of parking there. Smith said, "We let them park there as long as they didn't take advantage of us. Now there are cars everywhere back there, and it's just not working out." Smith also noted that there were too many cars in the lot to allow a safe exit.

"We're going to have a bad wreck because of this mess, unless we do something soon," Smith said, pointing out a blind corner that cars must round in order to enter the narrow, dirt lot.



The FTU high flying kite record of 3,000 ft. is presently held by Dave Jackson and Dave Sebastian. On Feb. 23, 1970, these two daring young men managed to fly their kite attached to 3,000 feet of string. They broke the old record by using a tee-type kite and cotton string.

Chancellor Robert B. Mautz, of the Board of Regents, congratulated the FTU library on the concept and quality of the FTU Library Current Awareness List. A regular publication, the Awareness List gives a review of current news and comments on higher education, and, in the words of Chancellor Mautz, "provides a much-needed information service."



CARS, cars everywhere, and not a place to park. FTU Security Department will be clamping down on

unauthorized cars that now jam every inch of space behind the Village Center.

FuTure Editorials

Representation Needed

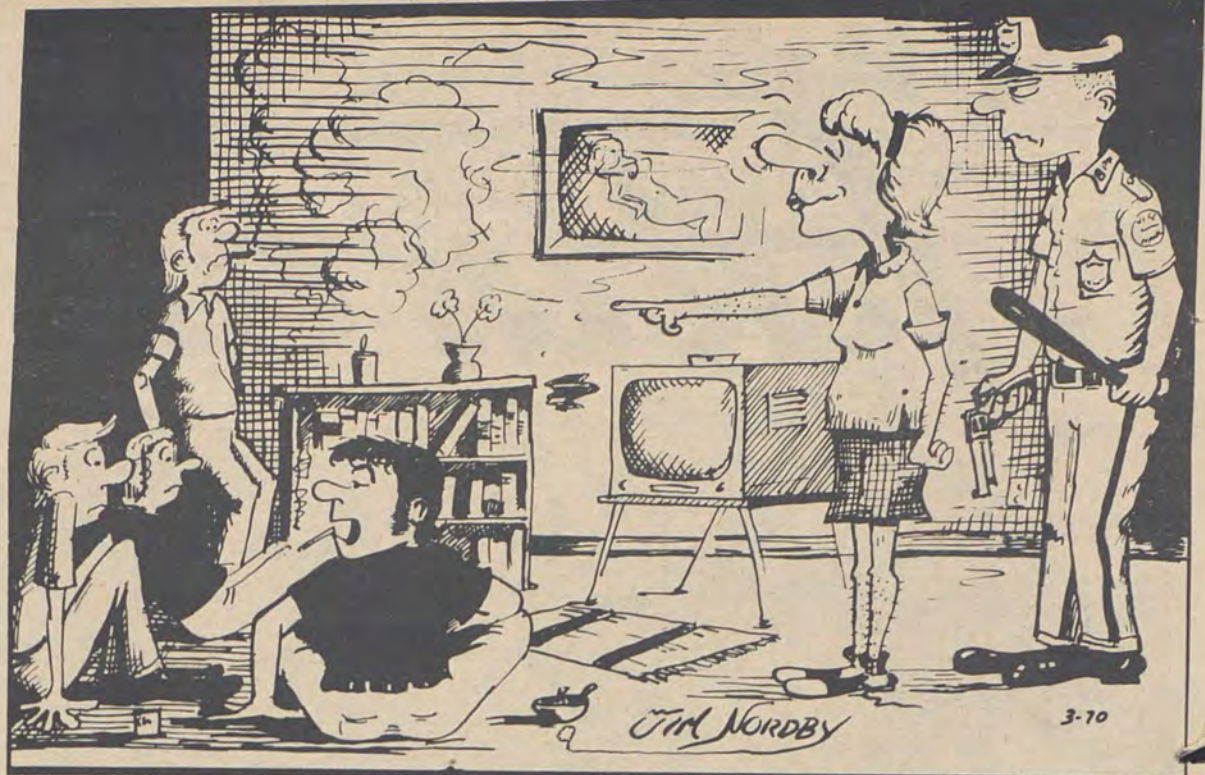
With Student Government elections nearing, now is the time for potential candidates to start considering and reconsidering exactly how much service they can offer before taking that final step of entering the race.

The membership of SG has been decreased by five due to extensive absences and resignations. It is also interesting to note that approximately 10-20% of the senate is absent each meeting. These people seem to have forgotten that they were elected by the students and they do represent the student body.

Student Government membership is one of the biggest responsibilities a student can take on in college. It is a job that needs the presence of each member at every meeting in order that the student body be represented. Officers and members are elected and they should take the responsibility of this job more seriously than they are apparently doing now.

This is not to deny the hard work that a number of the SG officers have done. Due to various conflicting forces, however, many items that were scheduled, had to be postponed or forgotten. Many of the Senators and Governors have put in a great deal of service and a number of them have never missed a meeting. But as in everything else, the bad aspects reflect the whole group and the good are often all but forgotten.

We urge all prospective SG members to consider what they are taking on before they make their final decision. The student body must be fairly represented.



"I TOLD YOU THEY HAD A DOG THAT COULD SMELL POT"

News Reporting?

It would seem that much of the news media in this country bows to a double standard of news reporting. When a bunch of college students get busted it makes front page. But when a bunch of "mature adults" get busted the news gets lost.

In a classic example which a friend of the FuTures pointed out last week there were 293 arrests made at the Daytona 500 mile race last month. Of those there were 191 traffic violations, 31 for intoxication, 23 minors for liquor violations, 5 for disorderly conduct, 7 for drunk driving, 2 for carrying concealed weapons, 3 for gambling, and 31 for ticket scalping. It was mentioned in the Orlando Sentinel, but on the sports page and two days after the race. On the other hand the PG&E concert received absolutely no publicity from the Sentinel, even though around 7,000 persons were in attendance. We can't help but wonder what the paper would have looked like if someone got busted for pot.

The Unknown Citizen

by W. H. Auden (1907 -)
This Marble Monument Is Erected by the State
To JS/07/M/378

He was found by the Bureau of Statistics to be
One against whom there was no official complaint,
And all the reports on his conduct agree
That, in the modern sense of an old-fashioned word, he was a saint,
For in everything he did he served the Greater Community.
Except for the War till the day he retired
He worked in a factory and never got fired,
But satisfied his employers, Fudge Motors, Inc.
Yet he wasn't a scab or odd in his views,
For his Union reports that he paid his dues,
(Our report on his Union shows it was sound)
And our Social Psychology workers found
That he was popular with his mates and liked a drink.
The Press are convinced that he bought a paper every day
And that his reactions to advertisements were normal in every way.
Policies taken out in his name prove that he was fully insured,
And his Health-card shows he was once in hospital but left it cured.
Both Producers Research and High-Grade Living declare
He was fully sensible to the advantages of the Installment Plan
And had everything necessary to the Modern Man,
A phonograph, a radio, a car and a frigidaire.
Our researchers into Public Opinion are content
That he held the proper opinions for the time of year;
When there was peace, he was for peace; when there was war,
He went.
He was married and added five children to the population,
Which our Eugenist says was the right number for a parent of his
generation,
And our teachers report that he never interfered with their education.
Was he free? Was he happy? The question is absurd:
Had anything been wrong, we should certainly have heard.

Letters To The Editor Marine Corps To Visit FTU

Quotes Questioned

Dear Editor:

I am writing in reference to the article in the FuTure, BeautyMore Than Skin Deep Makes Debbie An FTU Asset, by Nancy Smith, February, 27, 1970.

As is well known by most people on the FTU campus, Miss Deborah Wheatley was relatively an unknown person until the FTU Holly Queen contest last December, when she was sponsored by Chi Beta Alpha Professional Business Fraternity. In the article she states, "But I wouldn't want to enter the business world, because there is too much sneakiness, too much dirty dealing." Is Miss Wheatley implying that possibly there was some "sneakiness" and "too much dirty dealing" going on in this contest which she won? After all, was she not sponsored by future members of the business world?

Maybe this is cause for some deep thought about the way "beauty queens" are picked at FTU.

Miss Wheatley also stated that FTU is too fraternity-sorority oriented. I think the fraternities and sororities have done a fine job in making Central Florida residents aware of the existence of FTU and these organizations have been an asset to the University.

I dare say if school spirit was left to the independents nothing but apathy would prevail. Let me ask this question, Miss Wheatley - How many independents do you see going all out at basketball games like the Greeks?

There is something I remember about a goose and a golden egg; I wonder if that has any application here?

Xavier B. Armstrong

Are Teachers Teachers?

It is "Accent on the individual?" or is it "Accent on finishing the book?" With some teachers, the accent is on "finishing the book" (and frequently the student) rather than completing the material successfully. The question should not be 'How much can I cover', but rather 'How much can I help my students comprehend successfully on the average. A class is unlikely to be filled with students of very close abilities and experience. When a large number of students fail the same class, something is wrong somewhere. The teacher should really be concerned. But is he? 'I covered the material,' is his rationalization. And, of course he understood it, but did his students?

There is truism called "practice what you preach". FTU has a course for teachers called Teaching Analysis and according to the course, FTU only has a few teachers on the faculty. I feel students would profit more if professors would take this course, Teaching Analysis, as it is thoroughly taught by Dr. Hernandez.

After being in school all my life and having the experiences that I have had with teachers, I whisper a prayer to myself:

'Lord, I pray that if I ever succeed in college and become a teacher, I pray that no matter whether I have my B.A., M.A., or Ph.D.; I will never have the idea that I have mine, you've got yours to get. Oh! God! let me be able to teach so my students will be able to understand thoroughly my explanations. I pray of God, that I would never do something for my benefit, but for the students. I pray that I stay human and cope with situations that you will have me to do. And Lord, out of all of this. I pray that you will let me keep this same heart that I have and a conscience so I will know right from wrong.

Amen.

I don't feel that some teachers have a heart, they seem so unconcerned and indifferent towards their students; with other teachers, the students come first. I have been in a few situations that made me feel that they did it because I'm black, but that's not true, they did their own color like that unless the teachers were color-blind. If I had my way out here, I would go to only a few of the teachers that I have had experiences with, but they don't teach all the courses I need in the school. So, therefore, I'm sunk. Will I flunk or will I pass? Maybe I'm slow after all, after 3 years of college, maybe I'm nothing. With some of these teachers, you feel like hanging it all up.

If I were a teacher like some of these inhuman ones, I think I would go into something that didn't involve teaching. Some teachers like to flunk students so they can brag about it to another teacher. If they had it hard, why make someone else suffer because of it? Go to a psychologist and have it straightened out. We are not working on a masters yet, let us experience it when we get there.

If they brought 4 or 5 old cars out here at the end of the quarter, put the professors names on them, and charged money to hit these names in order to release the tension, I bet the scholarship fund would be greatly increased. The cars would probably look like a tin can run over by a semi. How about it teachers? Come on out here with us "where it is at, baby."

A Confused Student

CAMPUS GLANCES

Governor's appointment of Miss Elizabeth A. Kovachevich, St. Petersburg attorney, to a two year term on the Board of Regents has been approved by the State Board of Education. Miss Kovachevich, a native of Canton, Illinois, received the J.D. degree from Stetson University College of Law.

A nine year term ending January 1, 1979 was approved for Milton C. Weir, Jr., of Pompano Beach.

The U.S. Marine Corps officer Selection Team will be on the FTU campus March 9 and will set up a display and be available for interviews from 9 am to 3 pm in the Breezeway at the Village Center.

The Marine Corps offer the Platoon Leaders Class for undergraduates in the ground program as well as aviation for pilots and flight officers. Platoon Leaders Class training leads to a commission upon receipt of the Baccalaureate Degree from college. Seniors may attend Officer Candidate School after graduation. Upon completion of Platoon Leaders Class training or Officer Candidate School, the newly commissioned Second Lieutenants are assigned to The Basic School at Quantico, Virginia or the Naval Air Training Command at Pensacola, Florida.

VC Exhibits Art Posters

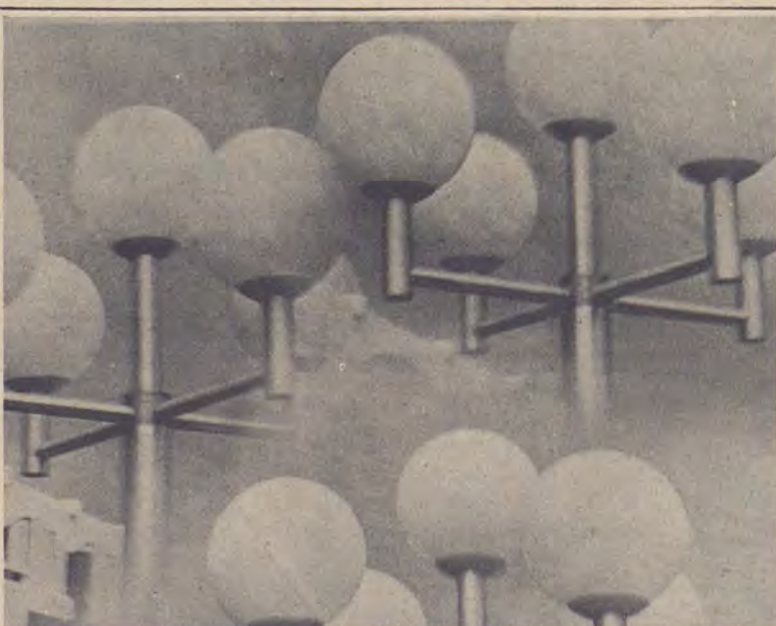
The Village Center in its continuing effort to provide a variety of art programs to the students, faculty and staff of Florida Technological University welcomes all to view the latest exhibition in the Village Center, Main Desk area.

THE IN TREND, a collection of 59 posters characteristic of the psychedelic movement, is provided from the collection of the University of South Florida and is scheduled from March 2 through the end of the winter quarter.

If you need a break from the tedium of cramming -- freak out on THE IN TREND.

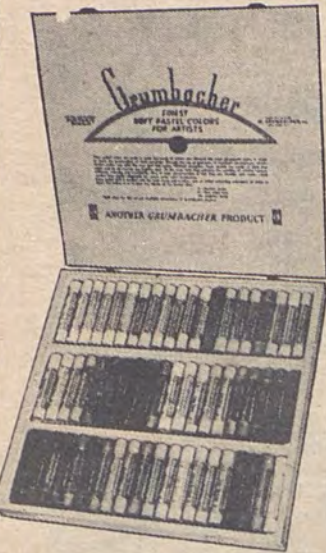
future

Editor-in-Chief Linda Mettel
Acting Associate Editor Chris Van Ormer
Photo Editor Chuck Seithel
Assistant Photographer Jim Lehman
Layout and Makeup Director John Gholdston
Acting Sports Editor Jeff Pippin
Advertising Manager John Cannavino
Art Critic Barbara R. Pietrzak
Staff Artist Jim Nordby
Circulation Mgr. Nancy Smith
Reporters: Nancy Smith, Dario H. Angel, Mary Anna Jackson, Eva Ramsey, James Wald, Ann Lynch, Jeff Pippin, Vivian Herr, Dee D. Decker, Henry Popkin
Advisor Todd Persons
The "FuTure" is the weekly newspaper of Florida Technological University at Orlando, Florida. The FuTure is published by President Charles N. Millican and written and edited by and for the students at Florida Technological University.
The FuTure reserves the right to refuse to print any letters which are submitted. All letters must bear the full name and address of the person (or persons) submitting them. Names will be withheld on request. Address all letters to: Editor, FuTure, P.O. Box 26267, Orlando, Florida, 32816.
Entered as second class matter at the post office at Orlando, Fla.



FuTure Photographer Chuck Seithel used a prism to capture the flavor of the round lights that have suddenly appeared in front of the new Administration Building. Reactions to the lights have been mixed.

CHECK WITH George Stuart

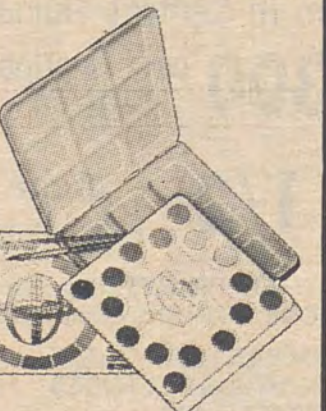
GRUMBACHER
Pastel Painting Sets**Grumbacher Soft Pastel Sets**

Finest quality, brilliant, rich, soft pastels in well-built, partitioned boxes...for every type of pastel work.

No. 2 Sketching 24 colors	\$5.10
No. 34 General 40 colors	\$8.00
No. 56 Portrait- Landscape 60 colors	\$12.50
No. 78 Portrait- Landscape 90 colors	\$17.25

GRUMBACHER
"Pre-tested" Oil Painting Set
No. 285

13 selected colors - 12 in 1" x 4" tubes and a large tube of white. Set contains oil, turpentine, Strip-palette, oil cups, palette knife, a painting panel, charcoal, a selection of brushes, cleaning cloth, and illustrated instruction booklet with color chart and mixing guide in 12" x 16" hamertone finish metal sketch box. Lid locks open for use as an easel.

No. 285 Set. **\$33⁹⁵****GRUMBACHER**
30-17 Symphonic®
Water Color Painting Set

16 brilliant round cakes (12 spectrum colors in a color circle and 4 earth colors) in a lift-out plastic tray. Brushes and instruction leaflet in a metal box with large mixing area palette cover.

\$4⁰⁰Complete stock of
colors and brushes.CHECK WITH **George Stuart**Phone Orlando 241-3431
133 EAST ROBINSON
DOWNTOWN ORLANDO

CHECK WITH George Stuart



Marriage is a mistake, a mistake inexcusable even in the face of ignorance. Hopefully the single F.T.U. male can be made aware of the trials and pitfalls of marriage, and use that knowledge to assure himself of a happy prosperous life.

Love, perhaps, is by far the most universal answer to the "why marriage" question. Any and every young couple will tell the world of their love for each other — a married couple of five years standing most certainly will not. This simple observable fact says more than enough for that passing infatuation called "love". No doubt the women on campus, wherever they may be hiding, will debate this fact for the complexity of love is immense. As many of us today own a dog, we can certainly say we love that dog. In fact again, the point can be made that many many males are married to dogs.

The female and the male both continue to think of marriage as "companionship." Stop and think a moment, you virile males. Does not a dog, cat or elephant offer companionship also? And these animals unlike most females, have sense enough to come in out of the rain.

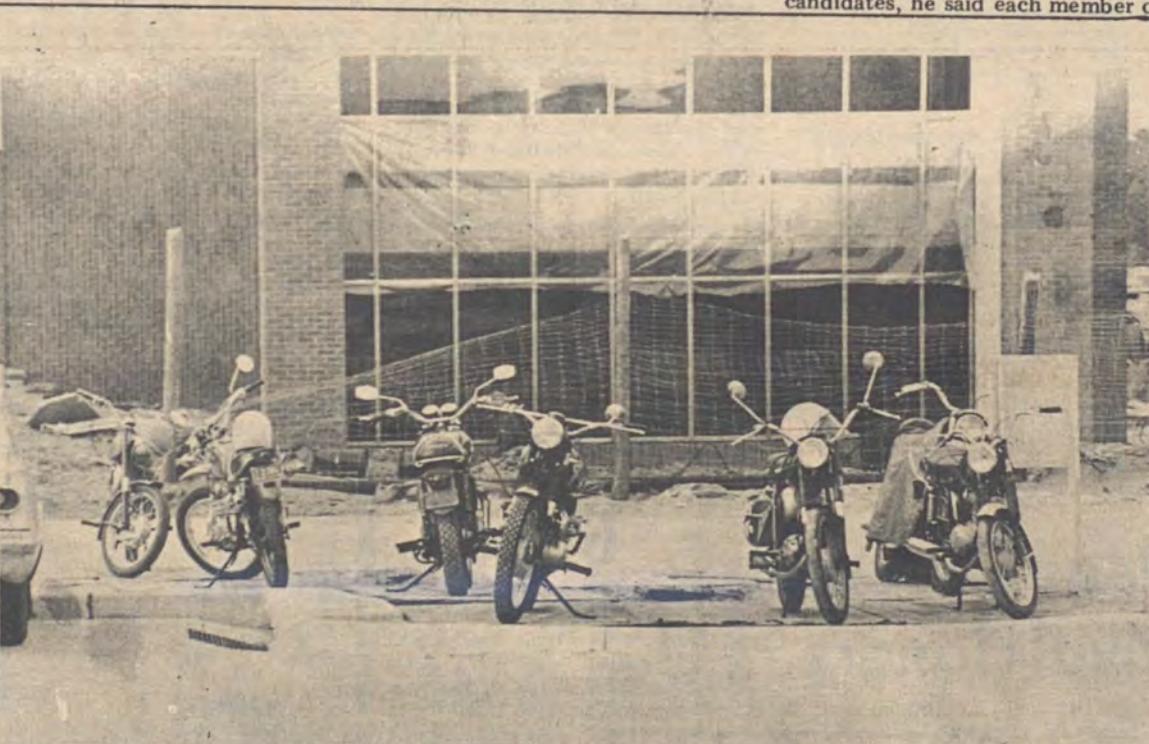
Ahhh-so you doubt the knowledge of the Toad, so be it, turn your attentions to one of higher authority, the Federal Government. It is a well published fact that the government allows only \$600 for a female companion — this meager sum should yield an insight as to the value of a wife (yecchh !!!).

Do you continue to doubt me, query another respected authority, your Dad. Talking with Dad this weekend you will find that he still desires companionship — in fact your Mom is probably continually reminding him to keep his eyes on the road while driving and not all the desired companions that are pacing the street.

And how many of us really expect to remain married to that sweet thing that said yes so sensually at the altar in that lovely little chapel. Five years after you're married you'll not recognize that sensuous body you married. Your favorite chair will be warped due to her excessive weight, her figure will rival a baby whale's, 40 per-cent of your salary will go toward the purchase of beauty aids.

As your life progresses, knowledge of the mistake of marriage becomes more pronounced. Marriage will haunt you as your first and last mistake of your entire lifetime, all other problems will become then trivial.

Oh ye F.T.U. male heed these little dewdrops of knowledge, protect yourselves from those aggressive, financially trying, ulcer causing, mind warping females, invest your money and talents on other campi, for therein lies more exciting pursuits.

THE SLIMY TOAD

CYCLE-ODOLOGY department at FTU is growing, as this photo indicates. Problem facing administration is where to put all the motorcycles that are and will be on campus.



THE soccer ball seems frozen awaiting the toe of this action-blurred FTU Soccer Club player as he approaches for a mighty kick during practice session on the FTU lawn.

Future Miss America Could Be Miss FTU

—Every girl dreams of becoming Miss America. The girl who is selected Miss FTU Pageant Queen could be the next Miss America. Now is the time to decide for any young lady who is an FTU student and who qualifies, Micky Jackson, pageant general chairman, said in calling for candidates to enter the pageant.

Jackson also announced that the Pageant will be conducted the Saturday night of April 25 at the Union Park Junior High School. He called for civic and social organizations of FTU to sponsor candidates and he called for individual young ladies to submit their own names as entries.

In urging civic and social organizations to sponsor candidates, he said each member of

the organization should consider the young ladies they know personally, relatives or daughters of friends, and should encourage the girls to enter the pageant.

Judging of the candidates will be based on the same values as considered at the Miss Florida Pageant and at the national Miss America Pageant. Poise, beauty and talent are the three major requirements. Each contestant will be judged in evening gown, in the presentation of her talent, and by her personality.

Applications can be obtained at the Dean of Women's Office. To qualify, a young lady must be between the ages of 18 and 28 on September 1, must be a high school graduate by September 1 and must never have been married.

Talent will be considered in the judging and each contestant should possess some quality of talent, either trained or potential. In discussing the talent qualifications Jackson stressed that the range is varied and that no girl must necessarily be trained in any specific field. He pointed out that many entrants in previous pageants did not realize that they possessed a quality of talent until they considered entering the contest. He also pointed out that in almost every national Miss America Pageant conducted in Atlantic City,

N.J., there have been state queens who have presented dramatic readings or comedy monologues as their talent presentations before a panel of nationally prominent judges.

"Any potential entrant may also have a talent unrealized," Jackson commented, adding that a young lady might be a delightful singer, for example, without ever having exhibited her singing ability before an audience.

Come Out of the Shadows
and join
Orlando's Newest Party Set
FREE!

Refreshments To Unescorted Ladies

Every Wed. Nite - 5p.m. to 2a.m.

Do Your Thing Nites

Mon. - Tues. - Wed.

Join a Jam Rock Session? Go-Go? Sing?

College Inn

SHOW TIME
8 p.m. to 2 a.m.No Cover - No Minimum
Under New ManagementE. Hwy. 50
5 Min. from FTU
277-7061**ANNOUNCING**
MEXICAN
BUFFET

All You Can Eat

\$1⁷⁹

Saturday & Sunday

3922 East Colonial Dr.

FORMERLY

Taco Rancho



NARCISSA KNOWS

Dear Narcissa,

I've finally gotten up enough nerve to spill my problem, so here it goes. I've been dating the same boy for about six months but he still hasn't tried to kiss me or get fresh or anything! What should I do? Is it right for the girl to make the first move? Don't tell me to find someone else because I love him (he has a wonderful personality) and besides, I couldn't get anybody else, he's got the thickest glasses at school so as it is. I can't hold out much longer.

Marvina Gardens

Dear Marvina,

You poor dear, so rambling and incoherent. So much for sympathy. You must be desperate. Keep in mind that no girl has ever been arrested for what you are insinuating. Give "Four Eyes" the works, but take care you don't get cut.

-O-

NARCISSA KNOWS that you all have problems. She has had much experience with them, not personally, but as a busybody. So write to nosy Narcissa at FTU Box 26267.

Lost Something Valuable? Check With The VC Desk

The Lost and Found Section at the Village Center has become a permanent resting place for quite a few lost articles. The articles are presently at the lost and found section and may be picked up at the student's convenience.

NOTEBOOKS:

Cindy Bryon - Graphic Folder
Ray Bronlet - Report
"The Dropouts" - Cervantes
Suzanne Cousherd - Drivers license as well as a notebook.

James Block - Draft card as well as notebook.

John Phelps - Notebook
Home Movie Book
Marye & Ed Summerhill (Diploma) notebook

Sam Horn - Notebook
PCL 461 - Notebook
Glenn Van Horten - Notebook
Art Notebook
French Workbook
Bookkeeping Sheets
Bradham - Science Teaching Tests
Melinda - Phonics Notebook
Sherry Sturm - Notebook
Kristin Smead - Psychology Notebook
Assignment Notebook
Sherry Frinks - Notebook

BOOKS

Cosmos & History
Lamar Day - Biology Book
300 Series Electronic Calculator Manual

Bruce Gardner - Deutsche Sprachlehre
Short Story Masterpieces
Home Movie Book
Exposition

Barbara Peel - Preparing Instructional Objectives

Preparing Instructional Objectives (No Name)

Elementary Spanish
Business and Its Environment (Used Book)

Richardson (New Functional French)
Steve Fairs Principals of Accounting
Toward Liberal Education

GLASSES:

Boys - Prescription - 3 pairs
Girls - Prescription - 2 pair
Boys - Sunglasses - 7 pair
Girls - Sunglasses - 5 pair
Boys - Prescription Sunglasses - 3 pair
Girls - Prescription Sunglasses - 1 pair

UMBRELLAS
Black - 12 (and one has James La Roe on the handle)

Plaid - 1
Brown - 3
Flowered - 2
Orange - 2
Yellow - 1
Light Green - 1

KEYS:

Key with Pink Yarn attached
State Farm Insurance
One Key near Science Bldg.
Key ring - 7 keys
Key in round circle (2 1/2" cir.)
Key found in elevator - red
Key ring - 6 Keys
King ring - 7 Keys
Key on Paper Clip
One Gold Key
Silver Key (Ford)
One Gold Key
Keys with the name Tinker on it

MISCELLANEOUS:

One Shoehorn
Corn Cob Pipe
Lighter (Silver)
Black Bear (4 inches high)
Small brown purse with Bayer Aspirin inside
Broken Gold Bracelet
2 broken silver watches
Gold I.D. Bracelet (Gay Marie)
Class Ring (Eastern Christian H.S. 1919 (P.E.M.))

Men's black coat
Left-handed baseball glove (Sandy)
Boys navy blue sweater
Large grey plastic raincoat and one clear plastic raincoat
1 mild plaid men's coat (place for lining)

Red bag (14"x7")
Yellow shirt - long sleeves
Brown plastic purse (Shoulder strap)
John Kirk (Check book)
Yellow Scarf
Slide rule (no case)
Grey men's socks
Maroon & navy (scarf or muffler)
Girl Scout hat
Bag of drifting equipment
Any questions see Vickie Freeborn, Village Center, Main desk.

TOO many cooks aren't spoiling the broth in the FTU kitchens these days. This is a behind-the-scenes look at how the food is prepared.

The Eatin's Fine at FTU Don't Believe It? Ask FSU

By HENRY POPKIN

FTU is presently the only State University in Florida with its own food service. Auxiliary Services, the formal title given to the food service, is located in the Multi-Purpose Room. Until a cafeteria is built on campus, which will be in approximately one year and a half, the food service will remain in the Multi-Purpose Room. The Multi-Purpose Room seats approximately 200 and is difficult to maneuver through when filled to capacity. This problem will be solved by the new cafeteria, which will have a seating capacity of 600.

Many students are under the misconception the food is catered by Morrison's Cafeteria. Morrisons only offers professional help, by hiring the cooks and bakers to work in the kitchen of the Multi-Purpose

Room and to deliver the food to FTU.

All the food served is prepared on campus. The maximum length of time food is kept is two days, which is only for cakes and pies. All other foods are kept for a maximum of one day.

James Eller, director of Auxiliary Services, explained, "The food is the best money can buy, and is prepared to the best of our abilities."

Eller said that residents on campus are required to purchase a food card. These cards are divided into two categories, 15-meal and 21-meal plans.

The 15 meal plan supplies the user with three meals a day, Monday through Friday. The 21-meal plan offers the user three meals a day, seven days a week.

All the money made by the Auxiliary Food Service when a student misses a meal, goes to buy the steaks and shrimp, and other delicacies which are appearing more often on the menu.

Eller said that FTU is the only state university that offers good quality steak as a regular feature.

William Bryant, manager of the cafeteria said, "We will not allow the cafeteria to become second rate. We are constantly trying to see how we can better the system and keep the costs to the student at a minimum."

Eller said he had not received any complaints about the food since the new system has been in effect, and in fact, the FTU food has become a rallying point for other state universities that have revolted recently demanding "food as good as FTU's."

There is also a food committee which meets every two weeks to try and better the food system and assist Eller's department in any way possible. The committee is comprised of students and faculty members.

What's Your Problem?

Anyone who has a question for the FuTure answer column, may mail it into the FuTure office, Box 26,267. Letters may be put in any campus mailbox.

Pop, Folk College Groups Take Top Festival Honors

Funk, Inc. from Florida A & M University and the Drambuies from Rollins College moved into the final round of competition for college music's national championships by taking top honors at the Budweiser-sponsored University of South Florida Intercollegiate Music Festival in Tampa on February 26 and 27.

Funk, Inc. edged The Grains of Time, a vocal group from North Carolina State University, for the championship in the popular music category. Both groups received stiff competition from vocalists Susie Walcher from the University of Tennessee, Mike and Nancy from the University of South Florida and DeVon Sport from Pensacola Junior College.

The Drambuies won the folk music championship with Sandra Thomas of Florida Atlantic University selected as runner-up. Converse College's Sally Spring, Fenwick & Isis from the University of South Florida, Margaret Brennan from St. Petersburg Junior College, Brevard Junior College's Don Maxson and Rebecca Marie, Roxann from Florida State University, Julie Robinson from Abraham Baldwin College, Susan Cooke from Sophie Newcomb College and Pandora's Box, a vocal group from Tulane University, received strong backing from Festival judges.

The two Festival champions will fly to the national finals of the

Intercollegiate Music Festival on August 13-15 on the Edwardsville campus of Southern Illinois University. They will face winners of the Villanova University, University of Colorado, University of Texas, Southern Illinois University and San Diego State College regional competitions.

The finals of the University of South Florida Intercollegiate Music Festival received a hearty welcome.



Campus Glances

Mrs. Mary Blackwell, Chief Pilot and Director of Flight Training at Falcon Aviation will be a guest speaker in the College of Business Administration's "Introduction to Business Class", Tuesday, March 10, 1970 at 9:00 a.m., room 16 of the General Classroom Building. Mrs. Blackwell's topic is entitled "The Mobility of the Business Executive and General Aviation".

Mrs. Blackwell is a Vassar College graduate, teacher, and professional FFA "Gold Seal" Flight Instructor and one of the very few distinguished Women Airline Transport Pilots in the U.S. with over 10,000 hours to her credit. She is also listed in Who's Who of American Women.



THE FAMILY STORE WESTERN AUTO ASSOCIATE STORE

Mr. & Mrs. J. C. EICHERT - Owners

9914 East Colonial Dr. Union Park

Telephone 277-5711



CITIZENS BANK OF OVIEDO

Five minutes north of F.T.U.

PHONE 365-3272 · P. O. BOX 248 · OVIEDO, FLORIDA

Member F.D.I.C.



Bell's! Bell's! Bell's!
By h.i.s. Largest

Selection in Central Florida
over 300 pair to choose from

for only 1/2 of the Reg. Price

LEATHER, PRINTS, PLAIDS
CHECKS, STRIPES and SOLIDS

WE ARE LOCATED IN SANFORD PLAZA
IN SANFORD, FLORIDA JUST 11 MILES
NORTH ON 17-92 FROM SR 436



WE HONOR:

• DINER'S CLUB

• AMERICAN EXPRESS



HIS Store For Men

Open 'til 9

Sanford Plaza - Sanford

Florida Technological University

Spring Quarter 1970 Class Schedule

TO THE STUDENT:

The class schedule lists the hours, days and rooms for courses and course sections to be offered at Florida Technological University during the Spring Quarter 1970. Information related to university, college, and major requirements, as well as registration fees, may be obtained by consulting the University Bulletin available at the Registrar's Office.

PREFIXES AND ABBREVIATIONS

ARTSD	Art Studio	TBA	To Be Arranged
GC	General Classroom Building	T	Tuesday
LR	Library Building	R	Thursday
SC	Science Building	TEC	Teaching Center
SCAUD	Science Auditorium	OVDO	Oviedo
VC	Village Center	UPJH	Union Park Jr. High

CONTINUING EDUCATION

A listing of off-campus and Continuing Education courses will appear in a separate schedule.

ADVISEMENT AND COUNSELING

All students should consult with their faculty adviser for advisement and counseling prior to registration. Schedule advisement for the Spring Quarter will be during the week of FEBRUARY 9-13. During this time, students will fill out an Advisement and Trial Schedule for the Spring Quarter. The completed form must be signed by the faculty adviser and presented at the time of registration. Students will not be admitted to registration without a completed and signed Advisement and Trial Schedule. Registration will be held on the second and third floors of the Library Learning Resources Building on the dates and times listed below.

REGISTRATION

MONDAY March 30

8:00 AM - 9:00 AM Registration by appointment of returning Graduate students.
9:00 AM - 6:30 PM Registration by appointment of returning Undergraduate students.
7:00 PM - 9:30 PM Registration by appointment of returning Undergraduate students.

TUESDAY March 31

8:00 AM - 9:00 AM Registration of any eligible returning Undergraduate students not registered.
9:00 AM - 11:30 AM Registration by appointment of new Undergraduate students.

LATE REGISTRATION

FRIDAY April 3

6:00 PM - 8:00 PM Registration for late applicants and temporary students.

TUESDAY April 7

4:00 PM - 6:00 PM Last late registration.

A late registration fee of \$25.00 will be charged all full-time students for registrations during the LATE REGISTRATION period.

ADD-DROP POLICY

With the approval of the student's adviser, courses may be added or dropped from the student's schedule during the official Add-Drop period of April 3 through April 7. A \$1.00 fee will be charged for each course added when the change is initiated by the student.

CLASSES FOR THE SPRING QUARTER BEGIN WEDNESDAY, APRIL 1 AT 8:00 AM

Florida Technological University reserves the right to change the class schedule as needed to properly meet the needs of students and the university.

PFX	NO	SEC	COURSE TITLE	QTR	HRS	TIME-DAY	BLOG	PROBABLE
							ROOM	INSTRUCTOR
ACCOUNTANCY								
ACCY	103	01	BASIC CONCEPTS	3	9:00- 9:50	MTW	LR240	Hartman
ACCY	103	02	BASIC CONCEPTS	3	10:00-10:50	MTW	GCB13	J. Stone
ACCY	103	03	BASIC CONCEPTS	3	11:00-11:50	MTW	GCB13	J. Stone
ACCY	307	01	ACCY CONCEPTS	5	8:00- 8:50	DAILY	GCB13	Lukas
ACCY	312	01	INTERMEDIATE ACCNTG	3	12:00-12:50	MTW	LR240	Hartman
ACCY	312	02	INTERMEDIATE ACCNTG	3	1:00- 1:50	MTW	LR240	Hartman
ACCY	352	01	FED INC TAX ACCOUNTING	3	8:00- 8:50	MTW	LR240	Davis
ACCY	352	02	FED INC TAX ACCOUNTING	3	6:00- 8:50	TR	PM GCB13	Katz
ACCY	434	01	AUDIT REPORT WRITING	3	10:00-10:50	MTW	LR240	Hartman
ACCY	491	01	PROBLEM ANALYSIS	3	11:00-11:50	MTW	GCB10	Lukas

ALLIED HEALTH SCIENCES

INHT	355	01	INTRO TO PHARMACOLOGY	3	1:00- 1:50	MTW	GCB12	Staff
INHT	380	01	RESPIRATORY PATHOLOGY	3	1:00- 1:50	T	OMH	Staff
					12:00- 1:50	R	OMH	Staff
INHT	381	11	RESPIRATORY PATH (Lab)	1	2:00- 3:50	R	OMH	Staff
INHT	390	01	CARDIO-PULMONARY RESUS	3	2:00- 2:50	MTW	SC115	Smith
INHT	391	11	CARDIO RESUS (Lab)	1	2:00- 3:50	T	OMH	Smith

ART

ART	203	01	DESIGN	3	1:00- 2:50	MTW	ARTSD	Eyfelles
ART	203	02	DESIGN	3	10:00-12:50	TR	ARTSD	Lotspeich
ART	206	01	DRAWING	3	11:00-12:50	MTW	ARTSD	Lots
ART	207	01	20th CENTURY ART HIST	3	3:00- 3:50	MTW	GCB14	Lots
ART	301	01	ART HISTORY SEMINAR	3	9:00-10:50	M	ARTSD	Eyfelles
					9:00- 9:50	W	ARTSD	Eyfelles
					2:00- 4:50	TR	ARTSD	Orr
ART	401	03	PAINTING (Studio Art)	3	3:00- 4:50	MTW	ARTSD	Kannon
ART	401	23	SCULPTURE (Studio Art)	3	7:00- 9:50	TR	PM ARTSD	Eyfelles
ART	495	01	SR STUDIO & EXHIBITION	3	TBA		Staff	
ART	497	03	UNDERGRADUATE SEMINAR	3	10:00-10:50	W	ARTSD	Staff
					9:00-10:50	F	ARTSD	Staff
ART	498	02	INDEPENDENT STUDY	2	8:00- 8:50	T	ARTSD	Staff
ART	498	03	INDEPENDENT STUDY	3	8:00- 8:50	T	ARTSD	Staff
ART	498	04	INDEPENDENT STUDY	4	8:00- 8:50	T	ARTSD	Staff
ART	498	05	INDEPENDENT STUDY	5	8:00- 8:50	T	ARTSD	Staff

BIOLOGY

BIOL	100	01	GENERAL BIOL I	3	8:00- 8:50	MTW	SCAUD	Vickers
BIOL	101	11	GENERAL BIOL I (Lab)	1	12:00- 2:50	T	SC111	Staff
BIOL	101	12	GENERAL BIOL I (Lab)	1	7:00- 9:50	T	PM SC111	Staff
BIOL	105	01	GENERAL BIOL II	3	2:00- 2:50	MTW	SCAUD	Mann
BIOL	106	11	GENERAL BIOL II (Lab)	1	8:00-10:50	W	SC111	Staff
BIOL	106	12	GENERAL BIOL II (Lab)	1	3:00- 5:50	M	SC114	Staff
BIOL	106	13	GENERAL BIOL II (Lab)	1	8:00-10:50	T	SC114	Staff
BIOL	106	14	GENERAL BIOL II (Lab)	1	12:00- 2:50	T	SC114	Staff
BIOL	106	15	GENERAL BIOL II (Lab)	1	7:00- 9:50	T	PM SC114	Staff
BIOL	106	16	GENERAL BIOL II (Lab)	1	8:00-10:50	W	SC114	Staff
BIOL	350	01	PRIN OF ECOLOGY	3	11:00-11:50	MTW	GCI29	Chesnut
BIOL	350	11	PRIN OF ECOLOGY	-	1:00- 1:50	W	SC109	Chesnut
					2:00- 4:50	W	FIELD	
BIOL	360	01	GENETICS	4	3:00- 3:50	MTW	SCAUD	White
BIOL	360	11	GENETICS RECITATION	-	9:00- 9:50	R	SC335	White
BIOL	360	12	GENETICS RECITATION	-	10:00-10:50	R	SC335	White
BIOL	360	13	GENETICS RECITATION	-	10:00-10:50	T	SC335	White
BIOL	420	01	CYTOLOGY	4	9:00- 9:50	MTW	LR358	Mann
BIOL	420	11	CYTOLOGY LAB	-	1:00- 3:50	R	SC217	Mann
BIOL	491	01	CONTEMPORARY BIOL	3	TBA		Staff	
BIOL	496	02	IMMUNOLOGY LAB	2	1:00- 4:50	M	SC214	Gennaro
BIOL	498	02	INDEPENDENT STUDY	2	TBA			
BIOL	498	03	INDEPENDENT STUDY	3	TBA			
BIOL	498	04	INDEPENDENT STUDY	4	TBA			
BIOL	499	02	UNDERGRAD RESEARCH	2	TBA			
BIOL	499	03	UNDERGRAD RESEARCH	3	TBA			
BIOL	499	04	UNDERGRAD RESEARCH	4	TBA			

PFX	NO	SEC	COURSE TITLE	QTR	HRS	TIME-DAY	BLOG	PROBABLE
							ROOM	INSTRUCTOR
BOTANY								
BOT	100	01	GENERAL BOTANY	3	9:00-10:50	T	SCAUD	Whittier
					10:00-10:50	R	SCAUD	Whittier
BOT	101	11	GENERAL BOTANY (Lab)	1	1:00- 3:50	W	SC111	Staff
BOT	101	12	GENERAL BOTANY (Lab)	1	1:00- 3:50	R	SC111	Staff
BOT	341	01	MYCOLOGY	4	8:00- 8:50	MTW	SC335	Hills
BOT	341	11	MYCOLOGY (Lab)	-	9:00-10:50	TR	SC214	Hills
BOT	345	01	PLANT TAXONOMY	4	10:00-10:50	MTW	SC115	Whittier
BOT	345	11	PLANT TAXONOMY (Lab)	-	1:00- 4:50	F	SC111	Whittier
BOT	498	02	INDEPENDENT STUDY	2	TBA			
BOT	498	03	INDEPENDENT STUDY	3	TBA			
BOT	498	04	INDEPENDENT STUDY	4	TBA			
BOT	499	02	UNDERGRAD RESEARCH	2	TBA			
BOT	499	03	UNDERGRAD RESEARCH	3	TBA			
BOT	499	04	UNDERGRAD RESEARCH	4	TBA			

BUSINESS ADMINISTRATION

BADM	101	01	BUSINESS	4	9:00- 9:50	MTWR	LR232	Badger
BADM	301	01	BUSINESS CONCEPTS	3	9:00- 9:50	MTW	GCB15	Mahaffey/Wilson
BADM	311	01	MATHEMATICAL APP TO BUS	3	4:00- 4:50	MTW	GCB10	Xander
BADM	371	01	BUSINESS LAW	3	2:00- 3:50	T	LR233	Mahaffey
					3:00- 3:50	R	LR233	Mahaffey
BADM	371	02	BUSINESS LAW	3	6:00- 8:50	W	PM GCB13	Pooler
BADM	373	01	BUSINESS LAW	3	8:00- 8:50	MTW	LR239	Mahaffey
BADM	373	02	BUSINESS LAW	3	6:00- 8:50	W	PM GCB10	Kiedzik
BADM	484	01	OPERATIONS RESEARCH	3	3:00- 3:50	MTW	GCB13	J. Stone
*BADM	490	01	SR SEM: BUS IN HUM AFFRS	2	10:00-10:50	MTW	GCB10	Comish
*BADM	490	02	SR SEM: BUS IN HUM AFFRS	2	10:00-10:50	TR	GCB13	Comish
*BADM	490	03	SR SEM: BUS IN HUM AFFRS	2	8:00- 8:50	TR	GCB10	Gilliland
BADM	495	01	BUSINESS POLICIES	5	9:00-10:50	TR	GCB10	Teepie
					10:00-10:50	F	GCB10	Teepie

*For Last Quarter Seniors Only

CHEMISTRY

CHEM	112	01	GENERAL CHEMISTRY	3	11:00-11:50	MTW	LR232	Baker
CHEM	113	01	GENERAL CHEMISTRY	3	1:00- 1:50	MTW	GCI25	Youngblood
CHEM	114	01	GENERAL CHEMISTRY (Lab)	1	1:00- 3:50	T	SC106	Clausen
CHEM	114	02	GENERAL CHEMISTRY (Lab)	1	2:00- 4:50	W	SC106	Hertel
CHEM	115	01	GENERAL CHEMISTRY (Lab)	1	2:00- 4:50	M	SC106	Youngblood
CHEM	115	02	GENERAL CHEMISTRY (Lab)	1	8:00-10:50	R	SC106	Youngblood
CHEM	115	03	GENERAL CHEMISTRY (Lab)	1	1:00- 3:50	R	SC106	Youngblood
CHEM	122	01	ORGANIC CHEMISTRY	3	10:00-10:50	MTW	LR232	Mattson
CHEM	123	01	ORGANIC CHEMISTRY	3	10:00-10:50	MTW	GCB15	Wheeler
CHEM	124	01	ORGANIC CHEMISTRY (Lab)	2	2:00- 4:50	MTW	SC109	Mattson
CHEM	124	02	ORGANIC CHEMISTRY (Lab)	2	8:00-10:50	TR	SC110	Juge
CHEM	124	03	ORGANIC CHEMISTRY (Lab)	2	1:00- 3:50	TR	SC110	Mattson
CHEM	125	01	ORGANIC CHEMISTRY (Lab)	2	2:00- 4:50	MTW	SC110	Wheeler
CHEM	163	01	CHEM PRINCIPLES	3	12:00-12:50	MTW	SC335	Clausen
CHEM	263	01	CHEM FUNDAMENTALS	3	9:00- 9:50	MTW	SC115	Hertel
CHEM	352	01	ANAL LAB TECHNIQUES	3	1:00- 4:50	MTW	SC306	McGee
CHEM	364	01	P. CHEM MEASUREMENTS	2	1:00- 3:50	TR	SC310	Hertel
CHEM	369	01	P. CHEMISTRY	3	8:00- 8:50	MTW	SC115	Clausen
CHEM	399	01	INTRO TO RESEARCH	1	12:00-12:50	T	SC115	Cunningham
CHEM	422	01	ADVANCED ORGANIC	3	1:00- 1:50	MTW	SC115	Juge
CHEM	443	01	BIOCHEMISTRY	3	4:00- 4:50	MTW	PM SC115	Cunningham
CHEM	445	01	BIOCHEM METHODS	2	1:00- 3:50	TR	SC306	Cunningham
CHEM	498	02	INDEPENDENT STUDY	2	TBA		Staff	
CHEM	498	03	INDEPENDENT STUDY	3	TBA		Staff	
CHEM	498	04	INDEPENDENT STUDY	4	TBA		Staff	
CHEM	499	03	UNDERGRAD RESEARCH	3	TBA		Staff	

COMMUNICATIONS

COM	100	01	BASIC COMMUNICATIONS	3	11:00-11:50	MTW	GCB15	Grasty
COM	400	01	OPINION & THE MASS MEDIA	3	12:00-12:50	MTW	LR213	O'Keefe
COM	498	03	INDEPENDENT STUDY	3	TBA			

COMPUTER SCIENCE

COMP	101	01	INTRO TO COMP SCI	3	9:00- 9:50	MTW	GCB17	Wheeler
COMP	101	02	INTRO TO COMP SCI	3	4:00- 4:50	MTW	PM GCB19	Wheeler
COMP	102	01	COMPUTER PROGRAMMING	3	9:00- 9:50	MTW	GCB03	Rhein
COMP	102	02	COMPUTER PROGRAMMING	3	1:00- 1:50	MTW	GCB03	Foster
COMP	102	03	COMPUTER PROGRAMMING	3	5:00- 5:50	T	PM GCB03	Rhein
					5:00- 6:50	R	PM GCB03	Rhein
COMP	202	01	ALGORITHMS & PROG II	3	1:00- 1:50	T	GCB03	Rhein
					1:00- 2:50	R	GCB03	Rhein
COMP	203	01	LOGORITHMS & PROG III	3	11:00-11:50	MTW	GCB03	Falconer
COMP	303	01	DATA STRUCTURES	3	2:00- 2:50	MTW	GCB03	Falconer
COMP	463	01	NUMERICAL ANALYSIS	3	1:00- 1:50	MTW	GC227	Jones
COMP	487	01	COMP PROC OF BUS DATA	3	5:00- 5:50	T	PM GCB19	Foster
					5:00- 6:50	R	PM GCB19	Foster
COMP	496	03	SP TOPIC (COMP STRUCT)	3	9:00- 9:50	MTW	GC227	Foster
COMP	498	02	INDEPENDENT STUDY	2	TBA			
COMP	498	03	INDEPENDENT STUDY	3	TBA			
COMP	498	04	INDEPENDENT STUDY	4	TBA			

<

PFX	NO	SEC	COURSE TITLE	QTR	TIME-DAY	BLDG	PROBABLE
				HRS		ROOM	INSTRUCTOR
PHYSICAL EDUCATION							
EDPE	306	01	ADMIN & COACHING	3	11:00-12:50 MW	GC126	Clark
EDPE	326	01	INST ANALYSIS - GYM	2	12:00-1:50 R	GC126	Hunter
PHYSICAL EDUCATION - ENVIRONMENTAL STUDIES							
ESPE	305	01	TENNIS	3	10:00-11:50 MW	FIELD	Hunter
ESPE	305	02	TENNIS	3	12:00-1:50 MW	FIELD	Hunter
ESPE	305	03	TENNIS	3	9:00-10:50 TR	FIELD	Renner
PROFESSIONAL LABORATORY - APPLICATION							
EDPL	320	01	ELEM SCH STUDENT TEACH	3	8:00-11:50 DAILY	TEC	Leffler
EDPL	321	01	ELEM SCH STUDENT TEACH	3	8:00-11:50 DAILY	TEC	Anderson
EDPL	321	02	ELEM SCH STUDENT TEACH	3	8:00-11:50 DAILY	TEC	Weidenheimer
EDPL	321	03	ELEM SCH STUDENT TEACH	3	8:00-11:50 DAILY	TEC	Beadle
EDPL	321	04	ELEM SCH STUDENT TEACH	3	8:00-11:50 DAILY	TEC	Weidenheimer
EDPL	330	01	SECOND SCH STUDENT TEACH	3	8:00-11:50 DAILY	UPJH	Hall
EDPL	330	02	SECOND SCH STUDENT TEACH	3	8:00-11:50 DAILY	OVDO	Hall
EDPL	330	03	SECOND SCH STUDENT TEACH	3	8:00-11:50 DAILY	UPJH	Kysilka
EDPL	330	04	SECOND SCH STUDENT TEACH	3	8:00-11:50 DAILY	UPJH	Rothberg
EDPL	408	01	TEACHING STRATEGIES	3	1:00-3:50 T	GC130	Poe
EDPL	408	02	TEACHING STRATEGIES	3	1:00-3:50 M	GC130	Harlacher
EDPL	408	03	TEACHING STRATEGIES	3	5:00-6:50 T	PM GC130	Brumbaugh
EDPL	408	04	TEACHING STRATEGIES	3	4:00-5:50 W	PM GC126	McGee
EDPL	408	05	TEACHING STRATEGIES	3	4:00-5:50 M	PM GC126	Rohter
EDPL	421	01	ELEM SCH STUDENT TEACH	9	8:00-3:30 DAILY	TEC	Poe
EDPL	421	02	ELEM SCH STUDENT TEACH	9	8:00-3:30 DAILY	TEC	Harlacher
EDPL	430	01	SECOND SCH STUDENT TEACH	9	8:00-3:30 DAILY	TEC	McGee/Sulloway
EDPL	430	02	SECOND SCH STUDENT TEACH	9	8:00-3:30 DAILY	TEC	Brumbaugh/Wise Cleland/Clark
SECONDARY EDUCATION - DEVELOPMENTAL							
EDSE	304	01	INSTRUCT TECHNIQUES	3	4:00-6:50 W	PM GC128	Brumbaugh
EDSE	304	02	INSTRUCT TECHNIQUES	3	8:00-10:50 W	GC121	McGee
EDSE	304	03	INSTRUCT TECHNIQUES	3	1:00-3:50 T	GC247	Wise
EDSE	304	04	INSTRUCT TECHNIQUES	3	8:00-10:50 R	GC247	Cleland
EDSE	305	01	SECOND SCH CURRICULUM	3	8:00-10:50 M	GC129	Kysilka
EDSE	305	02	SECOND SCH CURRICULUM	3	1:00-3:50 M	GC247	Kysilka
EDSE	305	03	SECOND SCH CURRICULUM	3	8:00-10:50 W	GC126	Wood
EDSE	305	04	SECOND SCH CURRICULUM	3	1:00-3:50 W	GC126	Wood
EDSE	306	01	BUS INST ANALYSIS	4	8:00-10:50 T	GC247	Miller
EDSE	307	01	ENG INST ANALYSIS	4	8:00-10:50 T	GC126	Wood
EDSE	308	01	MATH INST ANALYSIS	4	8:00-10:50 R	LR210	Brumbaugh
EDSE	309	01	SCIENCE INST ANALYSIS	4	8:00-10:50 R	LR239	Staff
EDSE	408	01	P E INST ANALYSIS	4	8:00-10:50 R	GC126	Hunter
EDSE	409	01	SOC SCI INST ANALYSIS	4	8:00-10:50 T	GC245	McGee
EDSE	491	01	CONTEMPORARY BIOLOGY	3	TBA		Staff
EDUCATION - TEACHING ANALYSIS							
EDTA	206	01	HUMAN DEVELOPMENT	3	8:00-8:50 T	LR357	Mussman
					8:00-9:50 R	LR357	Mussman
EDTA	206	02	HUMAN DEVELOPMENT	3	9:00-9:50 MWF	GC245	Leffler
EDTA	305	01	PRIN OF EVALUATION	3	8:00-10:50 F	GC121	Mussman
EDTA	305	02	PRIN OF EVALUATION	3	1:00-3:50 F	GC129	Mussman
EDTA	305	03	PRIN OF EVALUATION	3	8:00-10:50 M	GC126	Cleland
EDTA	305	04	PRIN OF EVALUATION	3	1:00-3:50 M	GC129	Hoover
EDTA	305	05	PRIN OF EVALUATION	3	1:00-3:50 R	GC245	Cowgill
EDTA	306	01	LEARNING THEORY	3	8:00-10:50 W	GC129	Hoover
EDTA	306	02	LEARNING THEORY	3	1:00-3:50 W	GC129	Hoover
EDTA	306	03	LEARNING THEORY	3	1:00-3:50 F	GC121	Hoover
EDTA	306	04	LEARNING THEORY	3	1:00-3:50 F	GC128	Leffler
EDTA	306	05	LEARNING THEORY	3	1:00-3:50 T	GC245	Leffler
EDTA	307	01	TEACHING ANALYSIS	5	8:00-9:50 T	GC128	McLain
					8:00-10:50 R	GC128	McLain
EDTA	307	02	TEACHING ANALYSIS	5	8:00-9:50 T	GC129	Sulloway
					8:00-10:50 R	GC129	Sulloway
EDTA	307	03	TEACHING ANALYSIS	5	1:00-3:50 T	GC129	McLain
					1:00-2:50 R	GC129	McLain
EDTA	490	01	SR SEM: ED IN HUM AFFRS	2	2:00-3:50 T	LR243	Hernandez
EDTA	490	02	SR SEM: ED IN HUM AFFRS	2	9:00-10:50 R	GC121	Hernandez
EDTA	490	03	SR SEM: ED IN HUM AFFRS	2	2:00-3:50 R	GC126	Hernandez
EDTA	490	04	SR SEM: ED IN HUM AFFRS	2	9:00-10:50 R	LR358	Wood
EDTA	490	05	SR SEM: ED IN HUM AFFRS	2	9:00-10:50 T	LR358	Cleland
EDTA	602	01	EDUC HUM DEV & LEARNING	3	6:00-8:50 T	PM GC129	Mussman
EDTA	602	02	EDUC HUM DEV & LEARNING	3	6:00-8:50 R	PM GC129	Staff
EDTA	604	01	RESEARCH DESIGN & TEC-ED	3	6:00-8:50 R	PM GC126	Cowgill
EDTA	604	02	RESEARCH DESIGN & TEC-ED	3	6:00-8:50 M	PM GC129	Thompson
ENGINEERING							
ENGR	101	01	ENGR GRAPHICS (Lec)	3	9:00-9:50 TR	GC125	Myrick
			ENGR GRAPHICS (Lab)		1:00-2:50 M	GCB04	Myrick
ENGR	101	02	ENGR GRAPHICS (Lec)	3	9:00-9:50 TR	GC125	Myrick
			ENGR GRAPHICS (Lab)		1:00-2:50 T	GCB04	Myrick
ENGR	103	01	CREATIVE DESIGN (Lec)	3	1:00-1:50 TR	GCB15	Jenkins
			CREATIVE DESIGN (Lab)		3:00-4:50 M	GCB04	Jenkins
ENGR	103	02	CREATIVE DESIGN (Lec)	3	1:00-1:50 TR	GCB15	Jenkins
			CREATIVE DESIGN (Lab)		3:00-4:50 M	SC311	Erickson
ENGR	103	03	CREATIVE DESIGN (Lec)	3	1:00-1:50 TR	GCB15	Jenkins
			CREATIVE DESIGN (Lab)		3:00-4:50 W	GCB04	Block
ENGR	103	04	CREATIVE DESIGN (Lec)	3	1:00-1:50 TR	GCB15	Jenkins
			CREATIVE DESIGN (Lab)		3:00-4:50 F	GCB04	Evans
ENGR	111	01	ENGR CONCEPTS (Lec)	3	2:00-2:50 TR	GCB15	Rapson
			ENGR CONCEPTS (Lab)		1:00-2:50 M	SC311	McCart
ENGR	111	02	ENGR CONCEPTS (Lec)	3	2:00-2:50 TR	GCB15	Rapson
			ENGR CONCEPTS (Lab)		1:00-2:50 W	GCB04	Myrick
ENGR	111	03	ENGR CONCEPTS (Lec)	3	2:00-2:50 TR	GCB15	Rapson
			ENGR CONCEPTS (Lab)		3:00-4:50 W	SC211	Rapson
ENGR	111	04	ENGR CONCEPTS (Lec)	3	2:00-2:50 TR	GCB15	Rapson
			ENGR CONCEPTS (Lab)		1:00-2:50 F	GCB04	Ventre
ENGR	151	01	CHEM FNDTNS ENGR (Lec)	3	10:00-10:50 TR	LR232	Goldstein
			CHEM FNDTNS ENGR (Lab)		1:00-2:50 M	SC211	Goldstein
ENGR	152	01	CHEM FNDTNS ENGR (Lec)	3	10:00-10:50 MW	GC125	Goldstein
			CHEM FNDTNS ENGR (Lab)		1:00-2:50 W	SC211	Goldstein
ENGR	152	02	CHEM FNDTNS ENGR (Lec)	3	10:00-10:50 MW	GC125	Goldstein
			CHEM FNDTNS ENGR (Lab)		1:00-2:50 T	SC315	Smith
ENGR	203	01	ENGR DESIGN CASE STUDIES	1	3:00-3:50 TR	GCB15	Mathews
ENGR	211	01	ENGR ANALYSIS - STATICS	4	9:00-9:50 MTWF	LR210	Rapson
ENGR	221	01	ELECTRICAL SCIENCE	4	8:00-8:50 MWRF	LR243	McCart
ENGR	221	02	ELECTRICAL SCIENCE	4	9:00-9:50 MWRF	LR243	Wall
ENGR	311	01	ENGR ANALYSIS - DYNAMICS	4	10:00-10:50 MTWF	LR210	Myrick
ENGR	312	01	MECH OF MATERIALS (Lec)	5	9:00-9:50 MWRF	GCB04	Hartman
			MECH OF MATERIALS (Lab)		1:00-2:50 T	SC208	Hartman
ENGR	312	02	MECH OF MATERIALS (Lec)	5	10:00-10:50 MTWF	LR239	Ward
			MECH OF MATERIALS (Lab)		8:00-9:50 R	SC208	Ward
ENGR	312	03	MECH OF MATERIALS (Lec)	5	10:00-10:50 MTWF	LR239	Ward
			MECH OF MATERIALS (Lab)		1:00-2:50 R	SC208	Ward
ENGR	312	04	MECH OF MATERIALS (Lec)	5	6:00-8:50 M	PM SC208	Rapson
			MECH OF MATERIALS (Lab)		6:00-8:50 W	PM SC208	Rapson
ENGR	321	01	PRIN ELEC ENGR (Lec)	4	2:00-2:50 MWF	LR243	Patz
			PRIN ELEC ENGR (Lab)		1:00-2:50 R	SC211	Patz
ENGR	321	02	PRIN ELEC ENGR (Lec)	4	8:00-8:50 MWF	SC315	Patz
			PRIN ELEC ENGR (Lab)		1:00-2:50 T	SC211	Patz
ENGR	322	01	ELEC NETWORKS (Lec)	4	9:00-9:50 MWF	SC211	Erickson
			ELEC NETWORKS (Lab)		2:00-3:50 R	SC315	Erickson
ENGR	322	02	ELEC NETWORKS (Lec)	4	6:00-8:50 T	PM SC315	Erickson
			ELEC NETWORKS (Lab)		6:00-7:50 R	PM SC315	Erickson
ENGR	331	01	THERMODYNAMICS	4	3:00-3:50 MWRF	LR210	Ventre
ENGR	332	01	FLUID MECHANICS (Lec)	4	11:00-11:50 MWF	LR243	Wall
			FLUID MECHANICS (Lab)		8:00-9:50 T	SC208	Wall
ENGR	341	01	ENGR ECON ANALYSIS	3	8:00-8:50 MWF	LR210	Clapp
ENGR	341	02	ENGR ECON ANALYSIS	3	11:00-11:50 MWF	LR210	Clapp
ENGR	342	01	SYSTEMS ANALYSIS	3	12:00-12:50 MWF	LR210	Clapp
ENGR	351	01	STRUCT PROP MATLS	3	12:00-12:50 MWF	SC211	Smith
ENGR	351	02	STRUCT PROP MATLS	3	4:00-4:50 MWF	LR243	Goldstein
ENGR	352	01	MATLS OF ENGR	3	11:00-11:50 MWF	SC211	Smith
ENGR	361	01	MAN & ENVIRONMENT	3	12:00-12:50 MWF	LR239	McLellan
ENGR	371	01	PROB & STAT FOR ENGR	3	1:00-1:50 MWF	LR243	Doering
ENGR	371	02	PROB & STAT FOR ENGR	3	6:00-8:50 R	PM LR243	Doering
ENGR	431	01	TRANSPORT PROCESSES	3	8:00-8:50 MWF	SC211	Evans
ENGR	442	01	OPERATIONS RESEARCH	3	9:00-10:50 T	LR243	Schrader
					10:00-10:50 R	LR243	Schrader
ENGR	443	01	ENGR ADMINISTRATION	3	3:00-3:50 MWF	LR243	Doering
ENGR	481	01	MAN & MACHINE	3	2:00-2:50 MWF	LR210	McLellan
ENGR	482	01	ENGR & TECH IN HIST	3	11:00-11:50 MWF	SCAUD	Hartman
ENGR	483	01	TECH & SOC CHANGE	3	1:00-1:50 MWF	LR210	Jenkins
ENGR	484	01	SCIENCE IN HIST	3	12:00-12:50 T	LR210	Henderson
					12:00-1:50 R	LR210	Henderson
ENGR	490	01	SR SEM (Lec)	2	12:00-12:50 T	SCAUD	Staff
			SR SEM (Recit)		12:00-12:50 R	LR243	Block
ENGR	490	02	SR SEM (Lec)	2	12:00-12:50 T	SCAUD	Staff
			SR SEM (Recit)		12:00-12:50 R	LR215	Jenkins

PFX	NO	SEC	COURSE TITLE	QTR	HRS	TIME-DAY	BLDG	ROOM	PROBABLE INSTRUCTOR
ENGR	490	03	SR SEM (Lec)	2	12:00-12:50	T		SCAUD	Staff
			SR SEM (Recit)		12:00-12:50	R		LR358	Evans
ENGR	490	04	SR SEM (Lec)	2	12:00-12:50	T		SCAUD	Staff
			SR SEM (Recit)		12:00-12:50	R		SC315	Erickson
ENGR	490	05	SR SEM (Lec)	2	12:00-12:50	T		SCAUD	Staff
			SR SEM (Recit)		12:00-12:50	R		LR348	McCarter
ENGR	490	06	SR SEM (Recit)	2	12:00-12:50	T		SC215	Bolemom
			SR SEM (Lec)		12:00-12:50	R		SCAUD	Staff
ENGR	490	07	SR SEM (Recit)	2	12:00-12:50	T		LR243	Kersten
			SR SEM (Lec)		12:00-12:50	R		SCAUD	Staff
ENGR	490	08	SR SEM (Recit)	2	12:00-12:50	T		LR215	Myrick
			SR SEM (Lec)		12:00-12:50	R		SCAUD	Staff
ENGR	490	09	SR SEM (Recit)	2	12:00-12:50	T		LR358	Ventre
			SR SEM (Lec)		12:00-12:50	R		SCAUD	Staff
ENGR	490	10	SR SEM (Recit)	2	12:00-12:50	T		LR348	Mathews
			SR SEM (Lec)		12:00-12:50	R		SCAUD	Staff
ENGR	496	02	SPECIAL TOPICS	2	TBA				
ENGR	496	03	SPECIAL TOPICS	3	TBA				
ENGR	496	04	SPECIAL TOPICS	4	TBA				
CIVIL ENGINEERING AND ENVIRONMENTAL SCIENCES									
CEES	351	01	STRUCT MECHANICS	4	TBA				Jenkins
CEES	361	01	TRANSPORTATION ENGR	3	12:00-12:50	MMF		GCB04	Ward
CEES	411	01	ENVIRONMENTAL ENGR	3	TBA				McLellon
CEES	431	01	SOIL MECHANICS	3	TBA				Hartman
ELECTRICAL ENGINEERING AND COMMUNICATION SCIENCES									
EECS	322	01	ELECTRONIC ENGR (Lec)	4	11:00-11:50	MMF		GCB04	McCarter
			ELECTRONIC ENGR (Lab)		8:00-10:50	T		SC211	McCarter
EECS	331	01	ELECTRO MECHANICS	3	12:00-12:50	MMF		LR243	Mathews
EECS	496	03	SPEC TPCS - CONTROL THEORY	3	TBA				Patz
ENGINEERING MATERIALS SCIENCES									
EMS	413	01	THERMO PROP OF MATLS	3	6:00- 8:50	M	PM	SC211	Smith
INDUSTRIAL ENGINEERING AND MANAGEMENT SYSTEMS									
IEMS	331	01	WORK ANAL & DESIGN	3	TBA				Schrader
IEMS	422	01	NETWORK ANAL	3	TBA				Clapp
MECHANICAL ENGINEERING AND AEROSPACE SCIENCES									
MEAS	411	01	AERODYNAMICS	3	TBA				Ventre
MEAS	423	01	VIBRATION ANALYSIS	3	TBA				Block
MEAS	432	01	PROPULSION SYSTEMS	3	TBA				Wall
ENGLISH									
ENG	101	01	COMPOSITION I	3	8:00- 9:50	M		LR348	Staff
					8:00- 8:50	F		LR348	Staff
ENG	101	02	COMPOSITION I	3	8:00- 9:50	M		LR359	Staff
					9:00- 9:50	F		LR359	Staff
ENG	101	03	COMPOSITION I	3	8:00- 9:50	T		LR348	Staff
					8:00- 8:50	R		LR348	Staff
ENG	101	04	COMPOSITION I	3	8:00- 9:50	T		LR359	Staff
					8:00- 8:50	R		LR359	Staff
ENG	101	05	COMPOSITION I	3	8:00- 9:50	W		LR359	Staff
					8:00- 8:50	F		LR359	Staff
ENG	101	06	COMPOSITION I	3	8:00- 9:50	W		LR348	Staff
					9:00- 9:50	F		LR348	Staff
ENG	101	07	COMPOSITION I	3	10:00-10:50	T		LR348	Staff
					9:00-10:50	R		LR348	Staff
ENG	101	08	COMPOSITION I	3	10:00-10:50	T		LR359	Staff
					9:00-10:50	R		LR359	Staff
ENG	101	09	COMPOSITION I	3	5:00- 6:50	T	PM	LR348	Staff
					5:00- 5:50	R	PM	LR348	Staff
ENG	101	10	COMPOSITION I	3	1:00- 2:50	T		LR359	Staff
					1:00- 1:50	R		LR359	Staff
ENG	102	01	COMPOSITION II	3	1:00- 1:50	MMF		LR348	Staff
ENG	102	02	COMPOSITION II	3	1:00- 2:50	T		LR348	Staff
					1:00- 1:50	R		LR348	Staff
ENG	102	03	COMPOSITION II	3	5:00- 6:50	M	PM	LR348	Staff
					5:00- 5:50	W	PM	LR348	Staff
ENG	103	01	CURRENT LITERATURE	3	11:00-11:50	MMF		LR348	Staff
ENG	103	02	CURRENT LITERATURE	3	3:00- 3:50	MMF		LR348	Staff
ENG	103	03	CURRENT LITERATURE	3	5:00- 6:50	T	PM	LR359	Staff
					5:00- 5:50	R	PM	LR359	Staff
ENG	210	01	PRIN OF LITERATURE	3	10:00-10:50	MMF		GCB14	Browne
ENG	213	01	SURV OF ENG LIT 1798-1914	3	9:00- 9:50	MMF		GCB14	Barnes
ENG	301	01	PROF REPORT WRITING	3	9:00- 9:50	MMF		LR215	Browne
ENG	301	02	PROF REPORT WRITING	3	1:00- 1:50	MMF		GC248	Grove
ENG	301	03	PROF REPORT WRITING	3	2:00- 3:50	T		GC248	Grove
					2:00- 2:50	R		GC248	Grove
ENG	301	04	PROF REPORT WRITING	3	6:00- 7:50	M	PM	GC248	Adicks
					6:00- 6:50	W	PM	GC248	Adicks
ENG	304	01	CREATIVE WRIT WRKSHIP III	3	11:00-11:50	MMF		GC248	Grove
ENG	313	01	SURV OF AM LIT SINCE 1914	3	11:00-11:50	MMF		GC125	Combs
ENG	371	01	PRIN OF LINGUISTICS	3	1:00- 2:50	T		GCB14	Omans
					1:00- 1:50	R		GCB14	Omans
ENG	426	01	STUDIES 18th CEN ENG LIT	3	3:00- 3:50	MMF		LR359	Brackney
ENG	433	01	SHAKESPEARE'S TRAGEDIES	3	1:00- 1:50	MMF		GCB14	Brackney
ENG	434	01	MILTON	3	11:00-11:50	MMF		GCB14	Brackney
ENG	453	01	BRIT & AMER DRAMA SI 1900	3	10:00-10:50	MMF		LR348	McCown
ENG	472	01	MODERN ENG GRAMMAR	3	3:00- 3:50	T		GCB14	Barnes
					2:00- 3:50	R		GCB14	Barnes
ENG	497	03	UNDERGRAD SEM-BYRON-SH-K	3	8:00- 9:50	T		GC248	Adicks
					8:00- 8:50	R		GC248	Adicks
ENG	497	13	UNDERGRAD SEM COMPOSITION	3	9:00-10:50	R		GCB14	Maness
FINANCE									
FIN	301	01	FINANCE	5	9:00- 9:50	DAILY		GCB13	T. Stone
FIN	301	02	FINANCE	5	12:00-12:50	DAILY		LR232	T. Stone
FIN	321	01	INVESTMENTS	3	1:00- 1:50	MMF		LR239	J. Stone
FIN	331	01	MONEY & BANKING	4	2:00- 2:50	MTWR		GCB10	Budina
FIN	341	01	REAL ESTATE	3	8:00- 8:50	MMF		GCB10	Hitt
FIN	431	01	FINANCIAL MANAGEMENT	4	12:00-12:50	MTWR		GCB13	Budina
FRENCH									
FRE	103	01	ELEM FRE LANG & CIV	3	12:00-12:50	MMF		LR356	Dragash
FRE	103	02	ELEM FRE LANG & CIV	3	8:00- 9:50	T		LR356	Dragash
					8:00- 8:50	R		LR356	Dragash
FRE	203	01	INTERM FRE LANG & CIV	3	8:00- 8:50	MMF		LR356	Thompson
FRE	313	01	SURV FRE LIT	3	1:00- 1:50	MMF		LR356	Thompson
FRE	441	01	19TH CENT FRE LIT	3	11:00-11:50	MMF		LR356	Thompson
GEOLOGY									
GEOL	100	01	INTRO GEOLOGY	3	1:00- 1:50	MMF		SC335	Kujawa
GEOL	101	01	INTRO GEOLOGY (Lab)	1	1:00- 3:50	T		SC109	Kujawa
GEOL	105	01	HISTORICAL GEOLOGY	3	10:00-10:50	MMF		LR215	Kujawa
GEOL	106	01	HIST GEOL (Lab)	1	1:00- 3:50	R		SC109	Kujawa
GERMAN									
GER	103	01	ELEM GER LANG & CIV	3	9:00- 9:50	MMF		LR356	Thompson
HISTORY									
HIST	203	01	WESTERN CULT & CIVIL	3	8:00- 8:50	MMF		GC116	Greenhaw
HIST	203	02	WESTERN CULT & CIVIL	3	3:00- 3:50	MMF		GC116	Greenhaw
HIST	203	03	WESTERN CULT & CIVIL	3	3:00- 3:50	T		GC116	Bailey
					2:00- 3:50	R		GC116	Bailey
HIST	203	04	WESTERN CULT & CIVIL	3	5:00- 5:50	MMF	PM	GC116	Adjunct
HIST	203	05	WESTERN CULT & CIVIL	3	5:00- 6:50	T	PM	GC116	Bailey
					5:00- 5:50	R	PM	GC116	Bailey
HIST	313	01	AMERICAN HISTORY	3	10:00-10:50	MMF		GC116	Wehr
HIST	313	02	AMERICAN HISTORY	3	1:00- 2:50	T		GC116	Wehr
					1:00- 1:50	R		GC116	Wehr
HIST	332	01	LATIN AMER HIST: 20th CEN	3	11:00-11:50	MMF		GC116	Jackson
HIST	416	01	U S HIST - 1878-1918	3	1:00- 1:50	MMF		GC116	Wehr
HIST	463	01	MOD BRIT HIST: 1815-pres	3	12:00-12:50	MMF		GC116	Greenhaw
HIST	466	01	BRIT HIST: TUDOR-STUART	3	2:00- 2:50	MMF		GC116	Greenhaw
HIST	491	01	HISTORY AND HISTORIANS	3	10:00-10:50	T		GC116	Wehr
					9:00-10:50	R		GC116	Wehr
HIST	499	01	HIST METHOD & RESEARCH	3	2:00- 2:50	T		GCB12	Jackson
					2:00- 3:50	R		GCB12	Jackson

PFX	NO	SEC	COURSE TITLE	QTR	TIME-DAY	BLOG	PROBABLE
				HRS		ROOM	INSTRUCTOR
ARTS AND SCIENCES IN HUMAN AFFAIRS							
HSS	490	01	SR SEM: ART	2	9:00- 9:50 MW	GC248	Lotz
HSS	490	02	SR SEM: ENG & AM LIT	2	9:00-10:50 T	GC814	Grove
HSS	490	03	SR SEM: LIT TRSLTN	2	4:00- 4:50 MW	LR356	Cervone
HSS	490	04	SR SEM: HUMANITIES	2	12:00-12:50 MW	GC248	Hotaling
HSS	490	05	SR SEM: PSYCHOLOGY	2	9:00-10:50 R	LR245	Burroughs
HSS	490	06	SR SEM: SOCIOLOGY	2	11:00-11:50 MW	GC130	Allen

HUMANITIES

HUM	301	01	WESTERN HUM I	3	11:00-11:50 MWF	GC124	Flick
HUM	301	02	WESTERN HUM I	3	12:00-12:50 T	GC124	Flick
					12:00- 1:50 R	GC124	Flick
HUM	302	01	WESTERN HUM II	3	12:00-12:50 MWF	GC124	Levensohn
HUM	302	02	WESTERN HUM II	3	3:00- 3:50 MWF	GC124	Levensohn
HUM	303	01	WESTERN HUM III	3	8:00- 8:50 MWF	GC124	Hotaling
HUM	303	02	WESTERN HUM III	3	9:00- 9:50 MWF	GC124	Hotaling
HUM	303	03	WESTERN HUM III	3	10:00-10:50 MWF	GC124	Hotaling
HUM	303	04	WESTERN HUM III	3	1:00- 1:50 MWF	GC124	Riser
HUM	303	05	WESTERN HUM III	3	2:00- 2:50 MWF	GC124	Riser
HUM	303	06	WESTERN HUM III	3	6:00- 8:50 M	GC124	Riley
HUM	303	07	WESTERN HUM III	3	8:00- 9:50 T	GC124	Hills
					8:00- 8:50 R	GC124	Hills
HUM	303	08	WESTERN HUM III	3	10:00-10:50 T	GC124	Dragash
					9:00-10:50 R	GC124	Dragash
HUM	303	09	WESTERN HUM III	3	1:00- 2:50 T	GC124	Hills
					2:00- 2:50 R	GC124	Hills
HUM	303	10	WESTERN HUM III	3	3:00- 3:50 TR	GC124	Riley
					4:00- 4:50 W	GC124	Riley
HUM	303	11	WESTERN HUM III	3	6:00- 8:50 R	GC124	Riley
HUM	371	01	CONTEMP AMER CULTURE	3	7:00- 9:50 W	GC815	Levensohn
HUM	413	01	THE ROMANTIC MOOD	3	12:00- 1:50 T	GC248	Riley
					12:00-12:50 R	GC248	Riley

JOURNALISM

JRN	423	01	WRITING FOR THE MASS MEDIA	3	1:00- 3:50 T	LR211	O'Keefe
JRN	431	01	INTNL COM & FOREIGN PRESS	3	10:00-10:50 MWF	LR213	O'Keefe
JRN	432	01	MASS MEDIA IN DEV COUNTR	3	2:00- 3:50 T	LR213	Head
					2:00- 2:50 R	LR213	Head
JRN	435	01	ADVERTISING MEDIA	3	8:00- 8:50 MWF	LR213	O'Keefe

LIBRARY SCIENCE

LIB	334	01	SELEC & ACQU OF LIB MTL	3	6:00- 8:50 T	PM LR213	Mellon
LIB	451	01	INTRO TO EDUC MEDIA	4	2:00- 3:50 TR	LR232	Cornell
LIB	452	01	PREP & PROD OF INSTRUCT	3	4:00- 4:50 M	PM LR210	Johnson
					4:00- 5:50 W	PM LR210	Johnson

MANAGEMENT

MGMT	301	01	MANAGEMENT	5	3:00- 3:50 DAILY	LR240	Winchester
MGMT	301	02	MANAGEMENT	5	6:00- 8:50 T	PM GC810	Winchester
					6:00- 7:50 F	PM GC810	Winchester
MGMT	324	01	PRODUCTION MANAGEMENT	5	1:00- 1:50 DAILY	GC813	J. Wilson
MGMT	324	02	PRODUCTION MANAGEMENT	5	2:00- 2:50 DAILY	GC813	J. Wilson
MGMT	344	01	ORGANIZATION THEORY	5	2:00- 2:50 DAILY	LR240	Comish
MGMT	347	01	HUMAN RELATIONS IN MGMT	3	9:00- 9:50 MWF	GC810	Young

MARKETING

MKTG	301	01	MARKETING	5	2:00- 2:50 DAILY	GC819	McAleer
MKTG	301	02	MARKETING	5	8:00- 8:50 DAILY	LR232	C. Wilson
MKTG	364	01	ADVERTISING MGMT	3	9:00-10:50 T	LR240	C. Wilson
					9:00- 9:50 R	LR240	C. Wilson
MKTG	367	01	SALES MGMT	3	11:00-11:50 MWF	LR239	McAleer
MKTG	367	02	SALES MGMT	3	12:00- 1:50 T	LR240	McAleer
					1:00- 1:50 R	LR240	McAleer
MKTG	601	01	MKTG POLICY	3	6:30- 9:20 R	PM GC810	Teepie

MATHEMATICS

MATH	100	01	PRIN OF MATH	4	10:00-10:50 MTWR	GC817	Gerber
MATH	100	02	PRIN OF MATH	4	2:00- 2:50 MTWR	GC817	Gerber
MATH	100	03	PRIN OF MATH	4	5:00- 5:50 MTWR	PM GC817	Gerber
MATH	104	01	ELEM MATH	3	2:00- 2:50 MWF	GC815	Hurst
MATH	106	01	COLLEGE ALGEBRA	5	10:00-10:50 DAILY	GC818	Armstrong
MATH	106	02	COLLEGE ALGEBRA	5	10:00-10:50 DAILY	GC804	Hurst
MATH	106	03	COLLEGE ALGEBRA	5	3:00- 3:50 DAILY	GC818	Armstrong
MATH	108	01	ANALYTIC TRIG	3	10:00-10:50 MWF	GC819	Staff
MATH	108	02	ANALYTIC TRIG	3	3:00- 3:50 MWF	GC819	Taylor
MATH	110	01	ELEM FUNCTIONS	5	2:00- 2:50 DAILY	GC818	Staff
MATH	115	01	FINITE MATH	5	1:00- 1:50 DAILY	GC818	Sherwood
MATH	115	02	FINITE MATH	5	9:00- 9:50 DAILY	GC818	Sherwood
MATH	198	01	FRESMAN SEMINAR	3	11:00-11:50 MWF	GC818	Norman
MATH	221	01	CALC WITH ANAL GEOMETRY	4	8:00- 8:50 DAILY	GC817	Jones
MATH	221	02	CALC WITH ANAL GEOMETRY	4	8:00- 8:50 DAILY	LR245	Staff
MATH	221	03	CALC WITH ANAL GEOMETRY	4	12:00-12:50 DAILY	GC817	Jones
MATH	221	04	CALC WITH ANAL GEOMETRY	4	12:00-12:50 DAILY	GC816	Pettofrezzo
MATH	222	01	CALC WITH ANAL GEOMETRY	5	8:00- 8:50 DAILY	GC818	Norman
MATH	222	02	CALC WITH ANAL GEOMETRY	5	8:00- 8:50 DAILY	GC816	Taylor
MATH	222	03	CALC WITH ANAL GEOMETRY	5	12:00-12:50 DAILY	GC818	Norman
MATH	222	04	CALC WITH ANAL GEOMETRY	5	12:00-12:50 DAILY	GC129	Taylor
MATH	223	01	CALC WITH ANAL GEOMETRY	5	8:00- 8:50 DAILY	GC819	Heinzer
MATH	223	02	CALC WITH ANAL GEOMETRY	5	8:00- 8:50 DAILY	BC125	O'Hara
MATH	223	03	CALC WITH ANAL GEOMETRY	5	12:00-12:50 DAILY	GC819	Heinzer
MATH	223	04	CALC WITH ANAL GEOMETRY	5	12:00-12:50 DAILY	GC814	O'Hara
MATH	223	05	CALC WITH ANAL GEOMETRY	5	7:00- 8:50 MW	PM GC817	Staff
					7:00- 7:50 R	PM GC817	Staff
MATH	223	06	CALC WITH ANAL GEOMETRY	5	8:00- 8:50 DAILY	LR215	Lytle
MATH	316	01	INTRO TO NUM THEORY II	3	11:00-11:50 MWF	GC817	Pettofrezzo
MATH	319	01	LINEAR ALGEBRA	3	4:00- 4:50 MWF	PM GC817	Barr
MATH	321	01	CALC WITH ANAL GEOMETRY	5	12:00-12:50 DAILY	GC803	Barr
MATH	331	01	DIFFERENTIAL EQUATIONS	4	1:00- 1:50 MTWR	GC819	Rautenstrauch
MATH	331	02	DIFFERENTIAL EQUATIONS	4	9:00- 9:50 MTWR	GC819	Rautenstrauch
MATH	413	01	ALGEBRAIC STRUCTURES	3	11:00-11:50 MWF	GC819	Heinzer
MATH	423	01	ADVANCED CALCULUS	3	1:00- 1:50 T	GC227	O'Hara
					1:00- 2:50 R	GC227	O'Hara
MATH	434	01	PARTIAL DIFF EQUATIONS	3	10:00-10:50 TR	GC819	Sherwood
					10:00-10:50 F	GC817	Sherwood
MATH	498	02	INDEPENDENT STUDY	2	TBA		
MATH	498	03	INDEPENDENT STUDY	3	TBA		
MATH	498	04	INDEPENDENT STUDY	4	TBA		

MICROBIOLOGY

MICR	210	01	CULTURE MEDIA & REAGENTS	2	12:00-12:50 T	SC335	Staff
MICR	210	11	CULTURE MEDIA & REAG (Lab)	-	TBA	SC214	White
MICR	320	01	PATHOGENIC MICRO	4	10:00-10:50 MWF	LR358	Gennaro
MICR	320	11	PATHOGENIC MICRO (Lab)	-	1:00- 3:50 T	SC214	Gennaro
MICR	430	01	MICROBIAL PHYSIOLOGY	4	9:00- 9:50 MWF	SC335	Charba
MICR	430	11	MICROBIAL PHYSIOLOGY (Lab)	-	1:00- 3:50 R	SC214	Charba
MICR	440	01	DETERMINATIVE MICRO	4	11:00-11:50 MWF	SC335	Charba
MICR	440	11	DETERMINATIVE MICRO (Lab)	-	1:00- 3:50 F	SC214	Charba
MICR	498	02	INDEPENDENT STUDY	2	TBA		
MICR	498	03	INDEPENDENT STUDY	3	TBA		
MICR	498	04	INDEPENDENT STUDY	4	TBA		
MICR	499	02	UNDERGRAD RESEARCH	2	TBA		
MICR	499	03	UNDERGRAD RESEARCH	3	TBA		
MICR	499	04	UNDERGRAD RESEARCH	4	TBA		

MUSIC

MUS	103	01	MUSIC THEORY	3	11:00-11:50 MWF	VC134	Sarakatsannis
MUS	105	01	MUSIC LITERATURE	2	2:00- 2:50 TR	VC134	Szomoru
MUS	111	01	PIANO - CLASS	2	2:00- 2:50 MW	VC133	Kupfer
MUS	111	02	PIANO - CLASS	2	3:00- 3:50 TR	VC133	Kupfer
MUS	112	01	VOICE	1	TBA		Schoenbohm
MUS	113	01	STRING	1	TBA		Staff
MUS	114	01	WOODWIND	1	TBA		Harris
MUS	115	01	BRASS	1	TBA		Williams
MUS	116	01	PERCUSSION	1	TBA		Staff
MUS	117	01	ORGAN	1	TBA		Eshenauer
MUS	118	01	PIANO	1	TBA		Kupfer
MUS	203	01	MUSIC THEORY	3	1:00- 1:50 MWF	VC134	Sarakatsannis
MUS	211	01	PIANO	2	TBA		Sarakatsannis
MUS	212	01	VOICE	2	TBA		Schoenbohm
MUS	213	01	STRING	2	TBA		Szomoru

PFX	NO	SEC	COURSE TITLE	QTR	TIME-DAY	BLOG	PROBABLE
				HRS		ROOM	INSTRUCTOR
MUS	214	01	WOODWIND	2	TBA		Harris
MUS	215	01	BRASS	2	TBA		Williams
MUS	216	01	PERCUSSION	2	TBA		Staff
MUS	217	01	ORGAN	2	TBA		Eshenauer
MUS	304	01	MADRIGAL SINGERS	1	10:00-10:50 MW	VC133	Schoenbohm
MUS	307	01	CONCERT CHOIR	1	12:00-12:50 MWF	VC133	Schoenbohm
MUS	308	01	BAND	1	4:00- 4:50 MW	VC133	Williams
MUS	309	01	ORCHESTRA	1	7:30- 9:30 T	PM VC133	Szomoru
					3:00- 3:50 R	VC133	Szomoru

MUS	311	01	PIANO	2	TBA		Sarakatsannis
MUS	312	01	VOICE	2	TBA		Schoenbohm
MUS	313	01	STRING	2	TBA		Schoenbohm
MUS	314	01	WOODWIND	2	TBA		Harris
MUS	315	01	BRASS	2	TBA		Williams
MUS	316	01	PERCUSSION	2	TBA		Staff
MUS	317	01	ORGAN	2	TBA		Eshenauer
MUS	421	01	PIANO	2	TBA		Sarakatsannis
MUS	421	02	PIANO	3	TBA		Sarakatsannis
MUS	421	03	PIANO	4	TBA		Sarakatsannis
MUS	421	04	PIANO	5	TBA		Sarakatsannis
MUS	496	03	SPECIAL TOPICS	3	TBA		Staff
MUS	496	04	SPECIAL TOPICS	4	TBA		Staff
MUS	496	05	SPECIAL TOPICS	5	TBA		Staff
MUS	498	02	INDEPENDENT STUDY	2	TBA		
MUS	498	03	INDEPENDENT STUDY	3	TBA		
MUS	498	04	INDEPENDENT STUDY	4	TBA		
MUS	498	05	INDEPENDENT STUDY	5	TBA		

PHILOSOPHY

PHI	221	01	INTRO TO PHI	3	9:00-10:50 T	LR357	Riser
					10:00-10:50 R	LR357	Riser
PHI	429	01	EXISTENTIALISM	3	2:00- 2:50 T	LR357	Riser
					1:00- 2:50 R	LR357	Riser
PHI	496	03	SPECIAL TOPICS (Ethics)	3	11:00-11:50 MWF	LR357	Levensohn

PHYSICS

PHYS	103	01	ASTRONOMY	4	1:00- 1:50 MWR	SCAUD	Bolemon
PHYS	107	01	COLLEGE PHYSICS	4	9:00- 9:50 MWR	SC315	Rexroad
PHYS	108	01	COLLEGE PHYSICS	3	2:00- 2:50 MWF	SC312	Oelfke
PHYS	189	01	COLLEGE PHYSICS (Lab)	1	8:00-10:50 R	SC311	Bolemon
PHYS	212	01	GEN PHYSICS	3	11:00-11:50 MWF	SC315	Bole
PHYS	213	01	GEN PHYSICS	3	2:00- 2:50 MWF	SC315	Henderson
PHYS	281	02	SCIENTIFIC INST LAB (Lec)	3	11:00-11:50 WF	SC312	Rexroad
			SCIENTIFIC INST LAB (Lab)		1:00- 2:50 TR	SC312	Oelfke
			SCIENTIFIC INST LAB (Lab)	3	11:00-11:50 WF	SC312	Rexroad
PHYS	282	01	SCIENTIFIC INST LAB (Lab)		3:00- 4:50 MW	SC312	Henderson
				1	8:00-10:50 T	SC311	Oelfke
				1	1:00- 3:50 R	SC311	Brennan
PHYS	323	01	GEN PHYS LAB	1	1:00- 1:50 MWF	SC208	Henderson
PHYS	333	01	MECHANICS	3	3:00- 3:50 MWF	SC315	Brennan
PHYS	336	01	ELECT & MAGN	3	12:00-12:50 MWF	SC312	Bole
PHYS	343	01	ELECTRONICS	3	10:00-10:50 MWF	SC315	Bolemon
PHYS	344	01	MODERN PHYSICS	3	1:00- 1:50 MWF	SC315	Oelfke
PHYS	496	04	MODERN PHYS FOR ENGR	4			
PHYS	494	04	SPECIAL TOPICS	3	TBA		Brennan

SPANISHTRIAL SCHEDULE WORK SHEET

DESIRED COURSES

Appropriate hour and day spaces should be blocked out in the schedule below as a check for you and your adviser that no time conflicts exist.

STATISTICS

THEATREZOOLOGY

ZOOL	100	01	GENERAL ZOOLOGY	3	1:00- 1:50 MWF	GCB15	Tandy
ZOOL	101	11	GENERAL ZOOLOGY (Lab)	1	2:00- 4:50 W	SC114	Staff
ZOOL	101	12	GENERAL ZOOLOGY (Lab)	1	8:00-10:50 R	SC114	Staff
ZOOL	101	13	GENERAL ZOOLOGY (Lab)	1	1:00- 3:50 R	SC114	Staff
ZOOL	221	01	COMP VERTEBRATE ANATOMY	3	5:00- 5:50 MW	PM GCB18	Snelson
ZOOL	221	11	COMP VERTEBRATE ANAT (Lab)	-	1:00- 3:50 T	SC217	Snelson
ZOOL	221	12	COMP VERTEBRATE ANAT (Lab)	-	1:00- 3:50 W	SC217	Snelson
ZOOL	234	01	ANATOMY & PHYSIOLOGY	5	9:00- 9:50 MWF	GC125	Taylor
ZOOL	234	11	ANATOMY & PHYSIOLOGY (Lab)	-	8:00-10:50 T	SC217	Taylor
ZOOL	234	12	ANATOMY & PHYSIOLOGY (Lab)	-	8:00-10:50 R	SC217	Taylor
ZOOL	322	01	VERTEBRATE HISTOLOGY	4	4:00- 5:50 MW	LR215	Staff
ZOOL	322	11	VERTEBRATE HISTOLOGY (Lab)	-	12:00- 2:50 M	SC217	Staff
ZOOL	330	01	ANIMAL PHYSIOLOGY	5	9:00-10:50 T	LR215	Vickers
					9:00- 9:50 R	LR215	Vickers
ZOOL	330	11	ANIMAL PHYSIOLOGY (Lab)	-	1:00- 3:50 F	SC217	Vickers
ZOOL	345	01	GENERAL ENTOMOLOGY	4	4:00- 5:50 MW	PM SC217	Staff
ZOOL	345	11	GENERAL ENTOMOLOGY (Lab)	-	1:00- 3:50 W	SC214	Staff
ZOOL	498	02	INDEPENDENT STUDY	2	TBA		
ZOOL	498	03	INDEPENDENT STUDY	3	TBA		
ZOOL	498	04	INDEPENDENT STUDY	4	TBA		
ZOOL	499	02	UNDERGRAD RESEARCH	2	TBA		
ZOOL	499	03	UNDERGRAD RESEARCH	3	TBA		
ZOOL	499	04	UNDERGRAD RESEARCH	4	TBA		

Doctor Millican ..The Man ..The President

(This is the second of a two-part interview with FTU President Charles N. Millican conducted recently by FuTure reporter Anne Lynch. The first article related President Millican's life until he entered Union University to study ministry. —Editors Note)

The president of FTU studied for the ministry. He graduated with a double major, one in religious education and the other in business administration. After he left Union University he went to the Northern part of Mississippi where he had accepted a position as pastor of a small Baptist church. He was pastor in Olive Branch Mississippi when World War II broke out: 'I had a very, very difficult struggle then,' he said, 'trying to decide where my first loyalty rested. Whether it was with the ministry and staying with my church and serving my country that way, or whether I should go into the armed services.' But the answer became clear for him when he received a call from Union University to work with the school in an Air Force program. So he resigned from his church and joined the USAF as a civilian instructor. Here he became an administrator in charge of the entire academic program. It was during this period of his life that President Millican

discovered his interest in college administration. When the AF program was closed out in 1944, he remained at the university setting up an aviation department for the school and he not only ran the program, but taught in it as well.

It was here at Union University that he met Frances, his wife. Her sorority had given a spaghetti supper to which he was invited, and he said: 'A few months after we met we were married. And may I add one other thing about the relationship that my wife and I have?' he asked. 'Both of us resolved that rather than majoring on the weaknesses that each of us have, as every human being has, that we would emphasize on the strong points. And we have both adopted the philosophy of trying to help each other to grow and develop. And we have tried,' he continued, 'over the years, to continue this.'

Dr. Millican received his master's degree at Peabody college and then in 1948 he and his wife moved to Florida where he entered the doctoral program at the University of Florida. In addition to working part-time on his doctorate, he taught full time at the university. At the same time, he was also the regular minister of the First Baptist Church in MacIntosh, Fla. He worked simultaneously on these

three jobs. 'But,' he said, 'I could not possibly have done it without the help of Frances. During those years there were many things we could not buy, and many things we could not do because we did not have the money, nor the time. I still clearly remember that during that long period of time, I would come home from the university at night and I would eat supper, do my pastoral duties, and then I would have to go to the study and work on my university work, or on the courses for my doctorate. And not one single time in those five and a half years did my wife ever utter one word of complaint about anything. And so,' he continued, 'I owe her a deep debt of gratitude. One that if I lived a thousand years I would never be able to repay.' Then he added, 'One of the finest days of my life was when I talked Frances into marrying me.'

Next Dr. Millican spoke of his dreams for FTU: 'I've been trying to crystalize this for about four years,' he said, 'and this is pretty difficult to do. People have asked me 'did I have in mind trying to build a University like the University of Florida?' And my answer has been 'no'. I think my answer has been no because I think rather than competing with some other university, rather than trying to be like some other educational institution, we should try to build a university here that has it's own personality. And its own identity. In this day and age this is as difficult as one individual trying to build and

(Continued on Page 12)



PLAYING to a SRO crowd of students, faculty and guests last week were these excellent musicians. Dr. Leonidas Sarakatsannis, FTU professor of music is at the piano, Peter Harris was the clarinetist and Arpad Szomoru was the chellist.

Capacity Crowd Hears Sarakatsannis Concert

The Science Auditorium was filled to capacity last Monday, March 2, for the evening concert which was presented by the Village Center. Dr. Leonidas Sarakatsannis began the program by performing several compositions for the piano. The first piece was Sonata in F Minor, Opus 57 by Beethoven. Subtitled "Appassionata", it is considered his greatest sonata up to the date of 1806. "Appassionata" is in three movements which integrate virtuosity and craftsmanship and preserve unity by being thematically related.

Three Etudes of "The Twelve Etudes" of 1915 followed. These were the last compositions that Debussy composed for piano solo. The Etudes represent a synthesis of the numerous aspects of Debussy's independent and original conception of piano composition.

Sarakatsannis next performed "Twelve Excursions for the Young Pianist" which he composed in 1959. The piece received the Florida Composers League "Composition Award" in 1961. They form a suite of short pieces illustrating some of the idioms of

twentieth century composition.

The Mephisto Waltz by Liszt was next performed. It is based on Lenau's long dramatic poem, "Faust" and the theme follows Faust and Mephistopheles into the inn in search of pleasure.

The presentation was concluded with a Piano Trio In A Minor, Opus 114 by Brahms. This is a chamber work performed by Sarakatsannis, Peter Harris, Clarinet, and Arpad Szomoru, chellist. Composed in 1891, the "Trio in A Minor" contains some of the most impressive and formally accomplished pages Brahms had ever written.

The next presentation will be performed by the FTU Woodwind Quintet March 9, 1970 at 8:30 p.m. in thy Science Auditorium. Works by Hindemith, Arnold, and Reicha will then be performed.

Kirk Declares A 'Circle K Week'

Monday, February 23, Circle K elected a new board for the coming year. Elected President-Chuck McConnell; Vice President-Robert McMillan; Secretary-Mike Walker; Treasurer-Dean Mixon. Newly appointed Sophomore Board Member is John Nelson and the Freshman Board Member is Arthur Haas.

This past week has been declared Circle K Week by Governor Claude R. Kirk. The weekend of February 26, 27 and 28 Circle K had its Florida District Convention at the University of South Florida in Tampa. This year's District Theme is "Aid in Depth, React Responsively, Tune In, Turn On, and Reach Out." The new District Governor is Dave Mellow of Broward Junior College. The new Lieutenant Governors are: Citrus

Division-Bruce Hale of Daytona Beach J.C.; Gold Coast Division-Bob Pulnik of Broward J.C.; Okeechobee Division-Bill Rose of Polk J.C.; Panhandle Division-Manny Pelaz of Florida State University; Suncoast Division-Ron Rudolf of St. Leo College; Suwanne Division-Terry Hermanson of University of Florida. The secretary is Paul Buckston of Palm Beach J.C. and the Treasurer is Terry Jones of Florida State University.

Members of the FTU Circle K in attendance were Chuck McConnell and Robert McMillan as delegates, Arthur Haas as a Sergeant-at-Arms and a Judge of Projects, Neill McMillan as Judge of Yop Club in the District, Dennis Kelly a Judge of Scrapbooks and Chris Pierce a Judge of Projects.



A CLOUD of dust and a hearty,...well, whatever grader operators shout as they work, are signs that the parking lots now under construction are nearing completion.

Scholarship Fund Set Up In Memory of WP Student

By MARY ANNA JACKSON

The students of Winter Park High School have started a special scholarship fund through the FTU Foundation to honor the memory of John Stonington, Jr., a Winter Park High School junior who was killed in a February 13 auto accident at Howell Branch Road and State Highway 436. John's classmates conceived the idea of starting a scholarship fund instead of sending flowers. The scholarship to FTU will be awarded to a Winter Park High School graduate of the class of 1971 (the same year John would have graduated). Contributions to the memorial fund have come from the Winter Park High School faculty, staff and students, and anyone wishing to help may send their contributions to the principal of Winter Park High School or to the FTU Foundation.

Mr. George J. King, Jr., Executive Assistant to the President at FTU, said that he had spoken to Mr. Stonington, and that Stonington had said he was pleased with the scholarship fund idea. Stonington

also said that he hopes the scholarship will go to a deserving student of high moral character. King said that at the time of graduation in 1971, the FTU Director of Student Financial Aid, Mr. J. William Loving, Jr., will meet with the Winter Park High School personnel to decide who will receive the scholarship. A separate budget account has been set up in the FTU Foundation for the memorial fund, and contributions may continue until the time of graduation in 1971. King also said that if the fund is large enough, more than one student may benefit from it.

Don't Miss Trip To See Eclipse

Denny Mussman, of the Astronomical Explorers Club is sponsoring a bus trip to see the eclipse on March 7, at Lake City. The bus leaves at 8:30 a.m., and goes to a private ranch twenty-five miles north of Lake City. Here, there are trained astronomers and information concerning the solar eclipse. In addition to this, they are trying to get telescopes for the real close-up views. However, for your own eye protections you must bring your own film or other eye covers, in order to watch. The bus will return at 6:00 p.m. that night.

The tickets for this trip are \$10.40 for adults, and \$8.32 for children under twelve. For further information contact Denny Mussman at 275-4504 or Orlando Transit Company.



The Psychology Club will be having a meeting Friday, March 6, 4:00 p.m. in the Village Center room 154. Refreshments will be served. All members are requested to attend.

As yet, FTU's Mascot goes unnamed. Any Faculty or staff members who would like to make suggestions, please contact Liz Cunningham in Public Information, Extention 2504. The Mascot Committee will be meeting again soon, and we would like as many suggestions as possible.

FOR SALE
Golf Clubs - Left Handed
8 Irons - 4 Woods
Byron Nelson Signature
\$60.00
Fenton "Hustler" Mags
65-69 GM
Call Paul Entrekin
8:00 - 5:00 275-2541 (School)
6 - 10:00 p.m. 831-6673 (Home)

LITTLE MAN ON CAMPUS



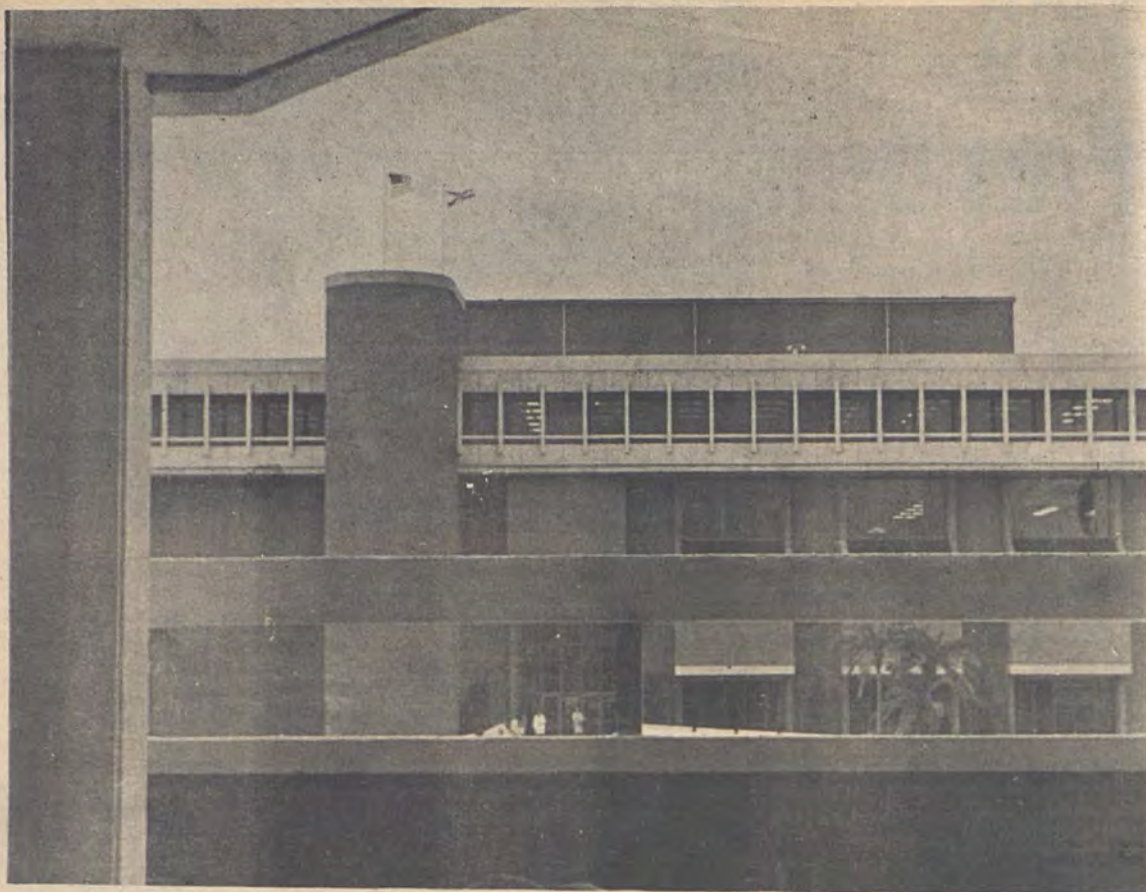
"I SOMETIMES WONDER HOW SHE GOT THRU THE FIRST TERM - SHE DOESN'T EVEN SPELL PREGNANT RIGHT!"

Hair Styling and Razor Cuts
Joe Dean - Hair Stylist

Oliff's Barber Shop
Oviedo, Florida

Five Minute Drive From FTU

OPEN
Weekdays 8-6 Saturday 8-5



CAUGHT in the act of photographing the new gold reflecting windows in the administration building is FuTure lensman Jim Lehman. The windows will

eliminate 80 percent of heat penetration from the outside and reduce air conditioning costs.

Love of People, Subject Needed For Teaching

Love of people and love of the subject are the two basic requirements for teaching English, or any subject, in the 1970's, explained Dr. Ross Brackney at a recent Language and Literature Club meeting. There are no successful formulas, however, for aspiring young professors. Their success must depend on the above qualities plus a special, unique identity. Dr. Brackney went on to say. Usually, the best indication of the professor's (young or old) ability is a sign of nervousness.

Dr. Brackney said FTU students, like a great majority of today's students, prefer 20th century literature to Old English and 15th-18th century literature, the reason being that 20th century literature is easier to understand and associate with.

"The study of the classical languages (Greek and Latin) can prepare you for anything," Brackney emphasized. "And if these classical languages have gone out of vogue, they can be replaced by English." (Not 20th century literature, but by Chaucer, Spenser, Shakespeare, and Milton). The study of old and early English is more important than ever before to balance our modern society and its language, he said.

He further advised would-be English professors to learn, research, and know "much, much more than you'll ever mention in a class. Prepare ALL lectures as if they were going to be given to graduate classes, whether you're teaching elementary, secondary, or university courses." The most important and rewarding part of teaching is the successful tapping of a student's potential. Here the professor's individual techniques are important: his grading system, his use of text and lectures, etc.

Concerning grading, Dr. Brackney said he favored the pass-fail system to the segmented letter or numerical systems. He warned the students not to be tyrannized by grades, that a "C" in a challenging course is much better than an "A" in a repetitive and boring class. "Education doesn't matter today," said Dr. Brackney. "If someone were selling degrees (or course records with all 'A's'), the students would gladly pay \$20 for the degree without the knowledge, curiosity, and integrity that goes with it."

Personal anecdotes and jokes amused the small faculty-student audience. Dr. Homer Combs, Chairman of the English department, welcomed the small group and Anne Lynch, Language and Literature Club president, presided over the program. Dues were announced as \$1 per quarter and anyone interested in joining the club is asked to contact Anne Lynch.

CAMPUS GLANCES

Dr. C. B. Gambrell, Vice President for Academic Affairs has been named a member of a committee set up by the Secretary of the Army to study the problems associated with the Army Universal Engineer Tractor program. (Suitable all-purpose tractor for all services.)

The FTU Vice President, a Lt. Col. in the Army Reserve, has served on other committees established by the Department of the Army dealing with various scientific programs under the supervision of the department.

Advertising contributed for the public good

The world needs all the help it can get.

Carpenters. Teachers. Mechanics. Businessmen. Almost anybody who's had experience working with his head and his hands.

Peace Corps, Box N, Washington, D.C. 20525
Please send more information

Name _____
Address _____
City _____
State _____ Zip _____

COME AND JOIN
US TOGETHER
WITH
SWEETWATER
AND
BAR SEIGER SYSTEM
ORLANDO SPIRITS
STADIUM
MARCH 14 7:30 TILL
THEN
George Scott

Science Tech Building To Be Completed By Fall

The completion date for the Science Technology Building and Phase I of the Data Processing Building is set for September 1970 if all goes according to schedule.

The Science Technology Building, when complete, will have a lot in store for the students. It will have the usual professors' offices, lecture halls and classrooms, seminar conference rooms and labs.

These labs are of different types, electrical and physics labs are just two to name a few. An added feature is a lecture wing. This wing will house three auditoriums. The largest will be on the ground floor and include a rotating stage and a projection booth. The other two auditoriums will be directly above the largest and half its size. These will be used for lectures. The total

usable floor space of the building, not including hallways and closets, is 63,014 square feet.

Directly behind the Science Technology Building is the Data Processing Building. It is being built at the same time as the Science Technology Building. Only a small portion is being built now and the rest of it will be completed after the university grows somewhat. The completed building will be in the shape of a circle and hold the computer systems.



OUR COLLECTION
OF MENS & WOMENS
APPAREL COULD
PUT A "SPARK" IN
YOUR SOCIAL LIFE!

LET US LIGHT YOUR FIRE

THE **Clothes Horse**

HWY. 436 AT ALOMA AVE. • WINTER PARK
CONWAY CENTER • ORLANDO



Galleries International

On Canton Avenue
at 401-B Park Ave. N.
Winter Park

Original Graphics

Fine Paintings

Custom Framing

• Student Discounts •

Monday - Saturday
9:00 - 5:30

Wednesday & Friday
9:00 - 9:00

Telephone 645-0808

Special this week!
Top Coats or Raincoats

99¢



Expertly cleaned at participating
**Sixty Minute
Dry Cleaners**

**1949 Aloma Ave.
Winter Park**

FTU Weightlifters Take Second

Tech Club Scores

The FTU Weightlifting Club placed second in the Dixie Invitational held recently in Atlanta, Georgia. Beating Tech was the University of Tennessee at Chattanooga and coming in third was the University of Tennessee.

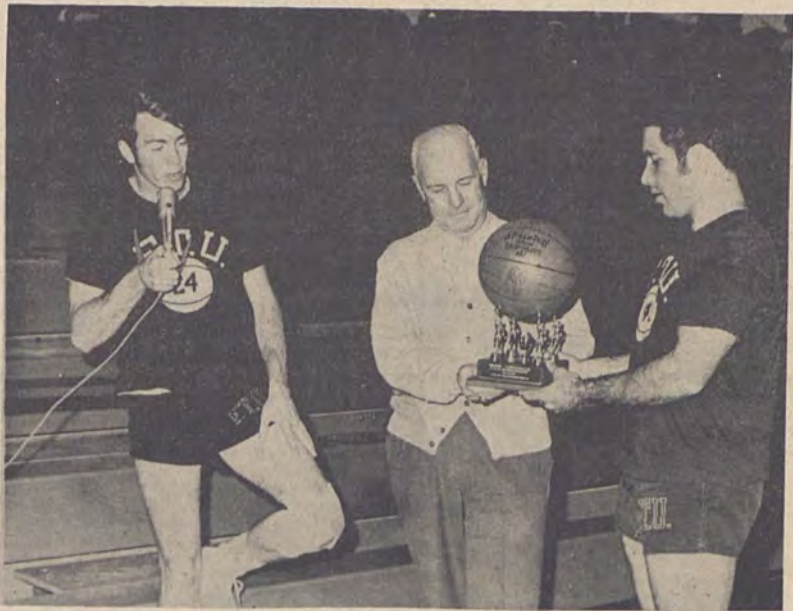
Tech compiled two first place, two third place, one fourth place, and one fifth place victories to take second place honors in the tourney.

Competition came from major universities and colleges throughout the Southeast. The meet consisted of olympic lifting including the press, snatch, and clean-and-jerk.

Placing for the FTU club were: Farrel Byrd, 1st place, 123 lb. class; Kevin Schnur, 3rd place, 148 lb. class; Mike Hatcher, 4th place, 148 lb. class; Gary Boo, 5th place, 181 lb. class; Duane Slegel, 3rd place, 242 lb. class; and Mike Stone, 1st place, unlimited class.



SOCCER in the twilight hours on the FTU campus is an everyday occurrence as the Club practices, waiting for scrimmages with local teams.



President Charles Millican is presented basketball trophy by members of the Tech team at the last game of the year. The ball was the one used in FTU's first game of the team's very successful season.

Varsity For Soccer Club Depends On Performance

By TOM GOFF

The FTU Soccer Club has formed such a powerful team that soccer may be in line to become the next varsity sport. Mark Ostrander, the team captain, said, "It all depends on how strong we are this coming fall quarter."

The actual root planting for the club began in the fall of 1968. Norbert St. Clair, the club's coach, went to the Athletic Dept. and asked them to send all boys interested in soccer to him. Twelve boys showed up; the Physical Education Department donated 2 rubber balls; and practice began behind the library. Soon, with no financial support, the club disintegrated.

Not until the beginning of this quarter did soccer come to light again. Captain Mark Ostrander and Coach Norbert St. Clair recruited 14 boys. After being officially

recognized, the club received \$150.00 from the Student Government Senate for 6 soccer balls.

The coach and the captain are by no means lacking experience. Coach Norbert St. Clair played soccer 23 years in high school, University, and in semi-professional leagues. He coached 2 years and received his certificate qualifying him to coach soccer or tennis from Sports Academy of Budapest. Mark Ostrander gained his experience playing soccer in Central America.

The club is lacking somewhat in experienced players. Coach Norbert St. Clair stated that he had six or seven boys who had never played before. He also added that they like it and are doing extremely well, but added in the same token that a major problem was in finding other clubs to scrimmage with.

Outstanding players on the team are Bob Steadman, forward; Richard Schmit, forward; Mark Ostrander, center halfback; and Don Miller, left inside.

Sports Shorts

The FTU Golf Club held its first intra-club qualifications meet February 22 at the Howey-In-The-Hills golf course. Medalist was Mark Stockwell with a score of 75. Other qualifiers were Paul Heidrick, Dean Brunson, Mike Utz, Roy Johnson, and Larry Martin.

The club defeated the Faculty-Staff club 506 to 545 March 1.

Medalist in that event was Mike Utz with a 70.

Coach Ken Renner, Director of Intramurals, announced that the spring quarter intramural sports for men are golf, softball, and track. The girls sports will be basketball, golf, bowling, and track.

Intramural tennis matches for men and women have started. Matches are played on FTU courts with players furnishing their own rackets.

WLOF

Channel 95

F SPORTS U

Sports Writers Needed by FuTure

With the ever-climbing number of athletic sports and clubs at FTU, the FuTure is in need of persons interested in sports to cover contests and games. The FuTure has one Sports Editor, Jeff Pippin, who covers the majority of the sports events but is not able to cover everything. Anyone interested is requested to contact the FuTure office at 2606 or come by room 153 of the Village Center.



INTRAMURAL basketball began this week at FTU. In the first game, members of TAU and TEP fraternities battle for the ball on the new basketball courts.

Clark Looks to Future Basketball

By JEFF PIPPIN

After closing out a highly successful maiden season, head basketball coach Gene Clark is already looking forward to the future and what it holds for the basketball program at FTU. "I am well satisfied with our first year and our unexpected accomplishments, but I can't help but look ahead of us and hope for improvement and progress."

If Clark has anything to do with it, there indeed will be progress. "We're working on improving every facet of the program from uniforms to scheduling." Although our schedule this year was as it should have been for our quality of play, we hope to schedule some tougher opponents next year and try to develop some rivalries to increase

spirit and participation," commented Clark.

"Also we will play more games and not be bothered by teams dropping us from the schedule without forfeiting," he added. This season FTU had seven games cancelled by opponents for one reason or another and if these were counted as forfeits the record would be 20-3 instead of 13-3.

"With four of our five top scorers returning next year, the line-up will be almost the same unless we pick up a few boys from the freshman team or we get a few transfers," stated Clark. "With all this plus the probability of going NCAA next year we can't help but play better basketball." This may not be reflected in the record next year, however. As the program grows and schedules tougher opponents the quality of play will also improve just as rapidly to keep from recording a losing season. This is not to suggest that it will be impossible to improve on this years impressive 13-3 slate but it will be a definite challenge.

But great adversity has been overcome many times before. A

prime example was this; the initial season when such problems as no scholarships, no home-gym, no set schedule, and a lack of student support were defeated to post a truly amazing record for a rookie team. "We could easily have been undefeated this year because our three losses were by a total of 12 points and each game could have gone the other way," exclaimed Clark. The three defeats were at the hands of Patrick Air Force Base 68-75, Palm Beach Atlantic (a full scholarship institution) 73-74, and Fort Lauderdale University (also full scholarship) 85-89.

Leading scorer of the season for the Tech cagers was consistent Mike Clark, offspring of head coach Clark, with a 24.4 per game average, followed by Rudi Jesse with 18.5 points per game and Bob Phillips with 13.3. Contributing significantly in each game was

teady Earl Stokes at 10.6 points per game and Don Mathis coming right behind at 10.3 points per game. "Our boys are to be congratulated for their hard work and dedication", lauded Clark, "They've faced many adversities but never gave up and have given the school its first winning team."

"I would also like to thank my assistant coaches Russ Salerno and Dean Brunson, all my players, the cheerleaders, the administration and Dr. Rohter for helping implement this program."

"Although the attendance was not overwhelming I want to thank those students who did support us and hopefully we can offer bigger and better games next year to draw bigger crowds."

Many people have said that the students at FTU lack spirit and pride. But these things are built through sports and competition, and if the future of the athletic program at FTU is anything like the brief past we will not only have an abundance of pride and spirit but also a winning sports program.

Name	F.G.	F.T.	F.T.M.	Per. Fouls	T.P.	Avg.
Mike Clark	158	60	45	39	371	24.4
Rudi Jesse	113	62	18	26	280	18.5
Bob Phillips	86	35	29	24	207	13.3
Earl Stokes	66	40	14	38	172	10.6
Don Mathis	66	35	25	45	167	10.6
Don Lilly	31	26	12	21	88	
Russ Salerno	15	13	9	7	43	
Mark Thornton	8	6	6	7	22	
Bob Jenkins	15	10	14	20	40	
Ivan Repass	2	7	4	4	11	
Wayne Bennett	8	2	2	6	18	
Dan Hill	8	2	0	1	18	
Vince Bratts	8	1	1	4	17	
Bob Cooper	1	0	0	0	2	
Jay Daughtery	0	0	0	2	0	

UNDERGROUND
107.7

Activity Calendar	FRIDAY	SATURDAY	SUNDAY
	MARCH 6	MARCH 7	MARCH 8
	1:00-2:00 p.m. VC 154 Sororas Meeting FuTure Staff Meeting 2-5 p.m. VC 155	Karate Club Meeting 2-4 p.m. LLR 245 V.C.S.A. Fine Film Wild Strawberries 8:15 p.m. Sci. Aud.	Karate Club Meeting 2-4 p.m. LLR 245 Tri-K Sorority Meeting 5-6:30 p.m. VC 154 Chi Alpha Committee Meeting 8-10 p.m. LLR 358 Kappa Alpha Sigma Meeting 7:30-9 p.m. VC 154 V.C.S.A. Fine Film Wild Strawberries 8:15 p.m. Sci. Aud.
MONDAY	TUESDAY	WEDNESDAY	THURSDAY
MARCH 9	MARCH 10	MARCH 11	MARCH 13
Marine Corps Interviews 8 a.m.-7 p.m. V.C. Patio 7, V.C. 154 Christian Science College Org. Meeting 11 a.m.-12 N VC 154 Tyes Meeting 6-8 p.m. B-13 Circle K Meeting 6-10 p.m. B-19 I.F.C. Meeting 9-10:30 p.m. LLR 355 Taus Meeting 8-9:30 p.m. GCB 15 Collegiate Civitan Meeting 8-10 p.m. Plaza First National Bank Music Concert Woodwind Quintet 8:30-11 p.m. Sci. Aud.	Pegasus Pilots Meeting 11 a.m. V.C. 154 Baptist Student Union Meeting 11 a.m. GCB 19 Army Interviews 8:30 a.m.-4 p.m. VC Patio Phi Beta Lambda 1st Annual FBLA Day Science Auditorium Panellenic Board Meeting 1-2 p.m. VC 154 V.C. Spring Formal Committee 4-5 p.m. VC 155 WRA Legislative Meeting VC 155 5-6 p.m. FTU Philharmonic Orchestra 7:30-10 p.m. MPR WRA Speaker Merle Norman's Representative 18-9 p.m. B Lounge	Army Interviews 8:30 a.m.-4 p.m. VC 154 & VC Patio Fideles Business Meeting 6:30-9 p.m. LLR 355 Fideles Pledge Class Meeting 7-9 p.m. LLR 243 Tyes Executive Board Meeting 7-9 p.m. VC 154 VCSA Flick Program The Moods of Surfing 8:15 p.m. M-P Room Chi Alpha Social Fraternity 8 p.m. GCB 13 Outing Club Meeting 7:30-9:30 GCB 130	Army Interviews 8:30a.m.-4 p.m. VC 154 & VC Patio V.C.B. Meeting 4 p.m. VC 154 Black Student Union Meeting 4-5 p.m. VC 155 Civnettes Meeting 4-5 p.m. LLR 358 The Fish Meeting 4-5 p.m. LLR 215 Student Government Student Senate Meeting 4-5 p.m. B-15. Karate Club Meeting 6-8 p.m. LLR 245 Young Republicans Meeting 8-10 p.m. GC 116.

DR. MILLICAN

(Continued from Page 9)

create an individual identity.

I suppose, he continued, "in trying to put into words some of the ambitions and dreams I have for FTU that I want us to have the finest university in the world. How we go about doing that will have to be developed step by step and year by year. One of the key ingredients, however, is expressed in one of our basic philosophies, that we must continue to put an accent on the individual. And that means the individual student, the individual faculty members, the individual staff member and the individual administrative person of the university." Then Dr. Millican said: "And I suppose all of this might be summarized by saying that perhaps we can build a university here that will have as one of its basic purposes, helping each individual person who is in the university, whether it is a student or a faculty member, whoever it is, grow and develop to the fullest potential that he has. And if we can do this one thing, I think we will have moved along the road to building a truly great university."

Next Dr. Millican elaborated on the many things that each of us as individuals can do to accomplish this. He mentioned trying to bring to the campus the finest professors in the nation. And then said that he thought the school had accomplished this. He spoke of the interest the teachers at FTU have in their students. Then he added the necessity of an adequate physical plant and the necessity of adequate funds to do the job. And he added that part of the problems to overcome financial as well as others could only be solved by remembering to keep the total picture in mind.

Lastly, President Millican spoke of his interest in the students of FTU and he answered in response to the question: "Have you anything to say specifically to the students? with "I want to continue trying to maintain close communication with all the students on campus. In spite of all the problems we have in America today, and there are many, they are complex and difficult, America is the finest nation in the world, and the greatest place on earth to live. We have an opportunity as Americans, to make the changes that are appropriate and that are necessary. It may take a little bit longer than any of us may like," he said, "but as has happened in a democracy before, perhaps that's the better way to do it in order for the changes that come to be for the best. And to be lasting. And I think we must always keep in mind that just making a change for the sake of change, does not mean that we're making things better. One of the things that all of us as Americans must keep in mind, whatever our age, is that we must work towards building a better tomorrow and not just a different one. And I believe also, that all of us on this university campus have an opportunity in working together to start that building of a better tomorrow. Right here on this campus. Because," he added, "we have to start at home." We cannot expect to just talk in broad generalizations about building a better world without doing everything that we can as individuals to build a better community in which we live. And a better campus."

Young Republicans Push For More FTU Housing

The FTU Young Republicans came out strongly in favor of more housing at FTU. A proposal was submitted to the YR Executive Board, and it was passed quickly. The proposal was submitted to the G.O.P. State Legislative committee which visited the FTU campus on Thursday, March 5. At a special meeting between the Young Republicans and the Republican State Legislative Committee the proposal was discussed. According to the legislators the primary problem concerning housing was the state financial situation. The group announced that they would look into the proposal.

The State Legislative Group of Republicans was formed to saturate the state and college campuses to obtain suggestions and complaints of all students on any issue. The group visited FTU at the Village Center on Thursday. The committee-at-large is co-chaired by Earl Dixon of Jacksonville and Bill James of Palm Beach.

According to Young Republican Vice Chairman Cathy Cierebiej, the group "was one of the finest things the Republicans or the state legislature could ever do. For a change college students are finally being given a chance to voice their opinion." Paul Gougelman, Chairman of the Young Republicans, added that his club planned to follow right in the footsteps of the G.O.P. Legislators. "Our club wants to help the FTU student, and we feel that housing or lack of housing is one of the most important issues. This is why we have presented this resolution to the legislators." Gougelman remarked that he had been in touch with Housing Director C. Barth Engert, and that he had been informed that due to the lack of state funds more housing would not be built until possibly 1972 or 1973. The Young Republicans felt that, since the legislature was the group that funded such activities, someone would have to approach them.

Tech Band Alive and Well

By MARY ANNA JACKSON

FTU has had a band since the winter quarter of 1969, but according to Arthur Haas, a flute player for the band, many students do not even know that the band exists. Right now the band has 25 members who play 12 different types of instruments, ranging from the flute to the bassoon. The band director, Mr. Edgar Williams, is an adjunct professor at FTU and band director at Winter Park High School.

The band has not given a concert since the well received Christmas program last quarter which was held in the lobby of the Library Building, Arthur Haas said that response to the band since the fall quarter has been better, but the band still needs more instrumentation. Among the instruments needed are trumpets, trombones, clarinets, oboes, bassoons, and all types of saxophones. Dr. Leonidas Sarakatsannis of the Music Department remarked that the band could double its size without encountering any problems.

The band's music is varied; it plays anything from classical to modern, or from marches to jazz.

CAMPUS GLANCES

Dr. W. M. McLellon has been appointed as a Consultant to the Water Pollution Control Federation to assist in development of a national manpower program entitled MANFORCE, i.e., MANpower FOR a Clean Environment.

-o-

You will find counterfeit streetcar transfers in a strange place.

News of an impending divorce will come as a surprise.

WFTU

900 on your AM Dial

MONDAY, MARCH 9th

"Continuing Information"

Full Day of Special Broadcasting

7:30 A.M. - Midnight

Best in Music

Latest Campus News and Information

LITTLE MAN ON CAMPUS



"THE REASON I'M LATE FROM P.E. IS BECAUSE THE HAIR DRIER BROKE DOWN IN TH' LOCKER ROOM."

FSA to Hold Congress at UF

A proposed Florida Student Association will hold an organization forming Congress on the University of Florida campus March 6 and 7. Approximately sixty delegates from 25 colleges in Florida are expected.

The individual delegate fee is \$3.50. Hornes Motor Lodge on I-75 in Gainesville has donated six rooms to house the 24 junior college delegates free. Also Delta Tau Delta Fraternity has donated three free meals for all the delegates.

Some of the items to be covered at the meeting are constitution revision, constitution ratification, declaration of officers, committee meetings for the Policy Committee and the Finance Committee, election of regional chairmen and advisory board members, and finally election of President, Vice-President, and Treasurer.

CAMPUS GLANCES

Student Government holds its meetings on the second activity period of each week so there will be no conflicting classes or activities.

-o-

Take stock of your assets: the liquor stores close early tonight.

WANT TO BE A B.M.O.C.?

Want To Determine What Programs And Activities Come To The Campus?

You can by PETITIONING NOW for DIRECTORSHIP on the VILLAGE CENTER BOARD!

Petitioning opens March 1 and closes April 7

your involvement is the key!

VILLAGE CENTER BOARD

for further information contact V.C. Main Desk