

6-24-1992

## Architectural plans for 1993 chancel area

Figbar Associates, Inc.

St. Luke's Lutheran Church

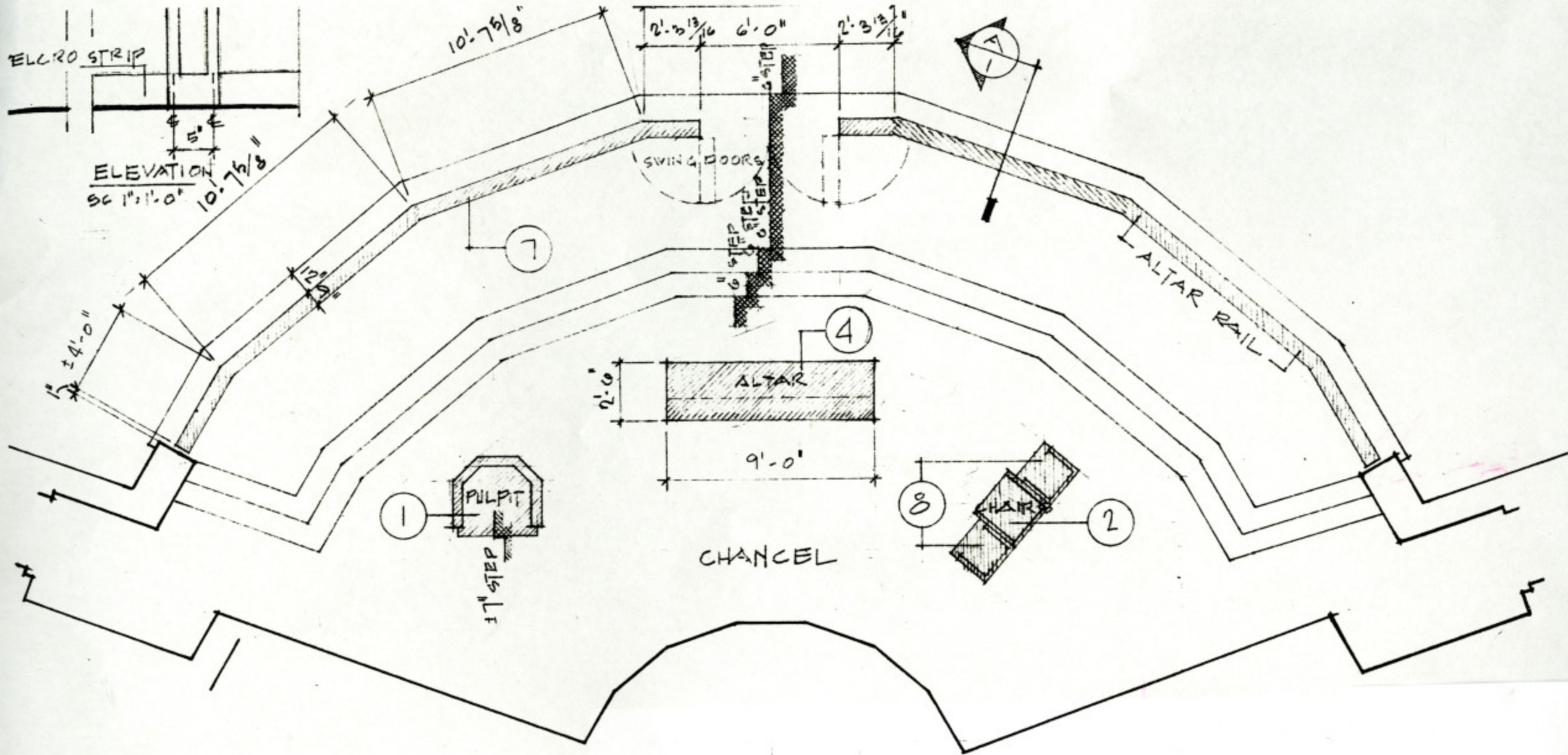
Find similar works at: <https://stars.library.ucf.edu/cfm-texts>  
University of Central Florida Libraries <http://library.ucf.edu>

This Document is brought to you for free and open access by the Central Florida Memory at STARS. It has been accepted for inclusion in Text Materials of Central Florida by an authorized administrator of STARS. For more information, please contact [STARS@ucf.edu](mailto:STARS@ucf.edu).

---

### Recommended Citation

Figbar Associates, Inc. and St. Luke's Lutheran Church, "Architectural plans for 1993 chancel area" (1992). *Text Materials of Central Florida*. 72.  
<https://stars.library.ucf.edu/cfm-texts/72>



CHANCEL FLOOR PLAN  
 SCALE: 1/4" = 1'-0"

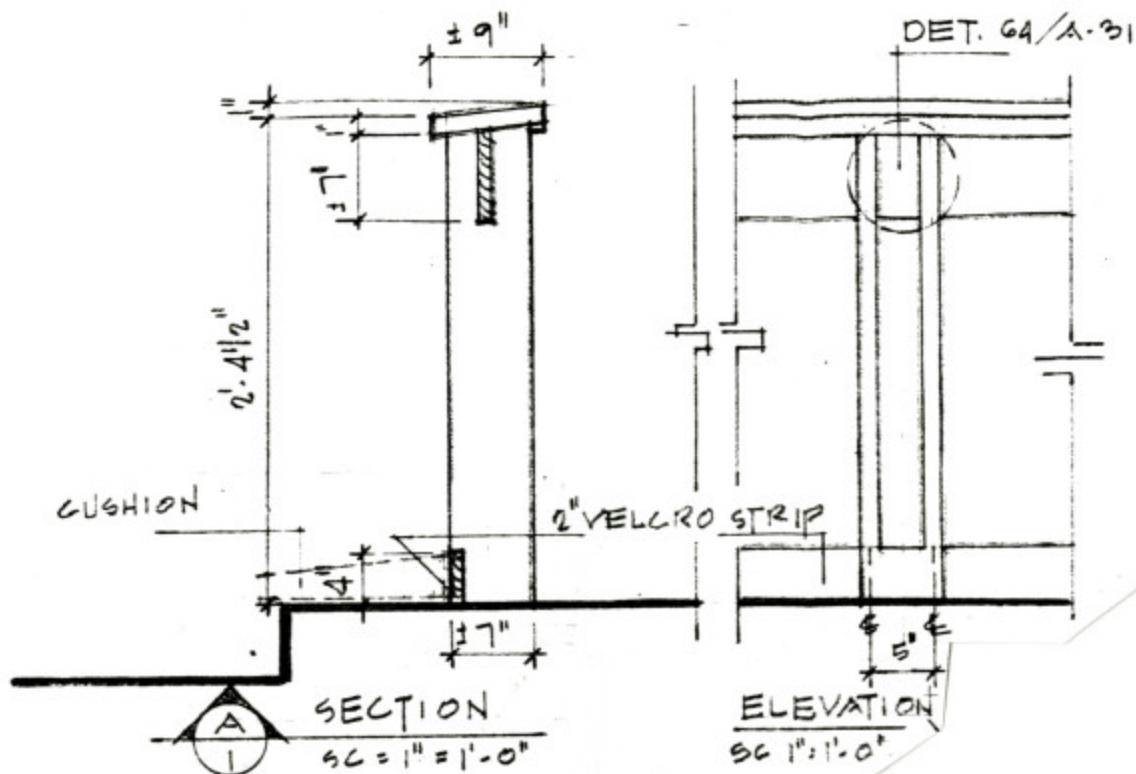
SAINT LUKE'S LUTHERAN  
 SCALE: AS SHOWN

6/24/92

# **SAINT LUKE'S Lutheran Church Oviedo, Florida**

**FIGBAR ASSOCIATES, INC.**  
**ARCHITECTS / PLANNERS**  
BOX 8811, DEER VILLAGE STATION, ORLANDO, FLORIDA 32766





7

## RAILING DETAILS

$SC = 1/2'' = 1'-0''$