

1-1-1910

Orlando Florida

H. B. Oden

Find similar works at: <https://stars.library.ucf.edu/cfm-texts>

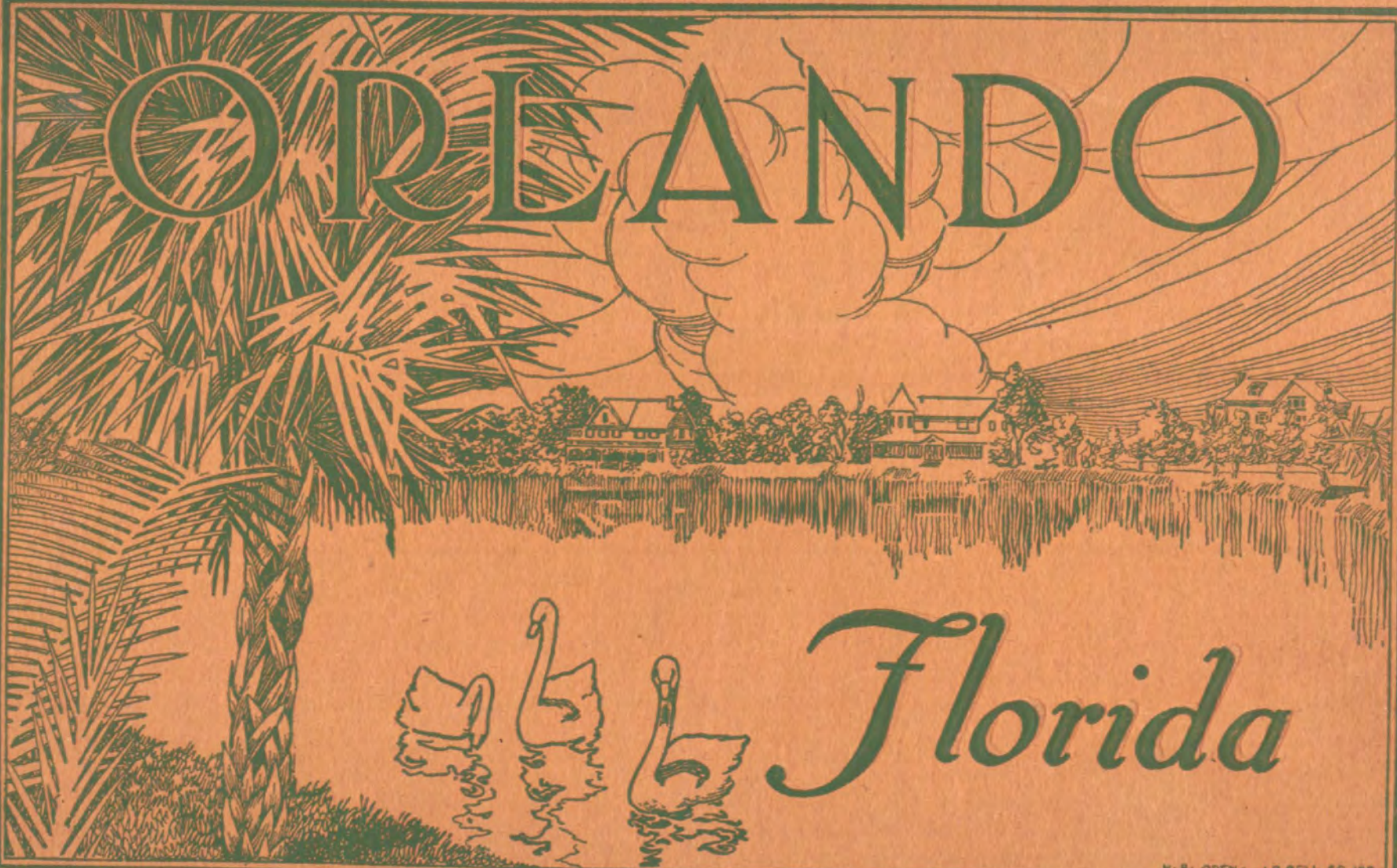
University of Central Florida Libraries <http://library.ucf.edu>

This Book is brought to you for free and open access by the Central Florida Memory at STARS. It has been accepted for inclusion in Text Materials of Central Florida by an authorized administrator of STARS. For more information, please contact STARS@ucf.edu.

Recommended Citation

Oden, H. B., "Orlando Florida" (1910). *Text Materials of Central Florida*. 171.
<https://stars.library.ucf.edu/cfm-texts/171>

ORLANDO



Florida

ORLANDO

Thomas



Orlando, Florida—Why?

THE BOARD OF TRADE OF THIS CITY INVITES YOUR ATTENTION TO ORLANDO.

WHY?



BECAUSE—Orlando was selected, as to location, on the peninsula of Florida for climate, for health conditions, drinking water, comfort winter and summer, freedom from mosquitoes, flies, and other annoying insects, absence from malarial and fever conditions, for natural beauty, and for the largest percentage of all the essentials of a home-built town.

BECAUSE: Orlando is built and is building on clean, broad, modern lines, embracing comfortable and artistic homes, fine schools, good churches, excellent stores, ample hotel and boarding-house accommodations, desirable public and private societies, clubs, and sports.

BECAUSE: Orlando is provided with everything a modern city must have: telephone system, local and long distance, two railroads, ice summer and winter, gas to cook with, electric light, best soft drinking water, brick-paved streets, cement sidewalks, evergreen shade trees, fine suburban roads, delightful clear-water lakes, good fishing and hunting near by.

BECAUSE: It is the center of the greatest orange-growing county in the State. It is comparatively near to the great trade centers. Can be reached by the A. C. L. and S. A. L. railways, as well as by water, within twenty miles, and thence by rail. It is just midway between Jacksonville and Tampa. It has 7,000 cosmopolitan, up-to-date, aggressive, and cultured people. It is building fine homes as fast as hammer and nails, brick, and mortar can accomplish it.

UNDERSTAND: There is no attempt within the limited space of this booklet to tell in detail the reasons why you should choose Orlando for your rest place, your pleasure spot, your winter resort, your southern residence, or your permanent home.

Herein are represented, in picture, a few of the good features of Orlando, and they tell their own story. As a companion to this book the Board of Trade has published a book of practical information, which may be had by addressing

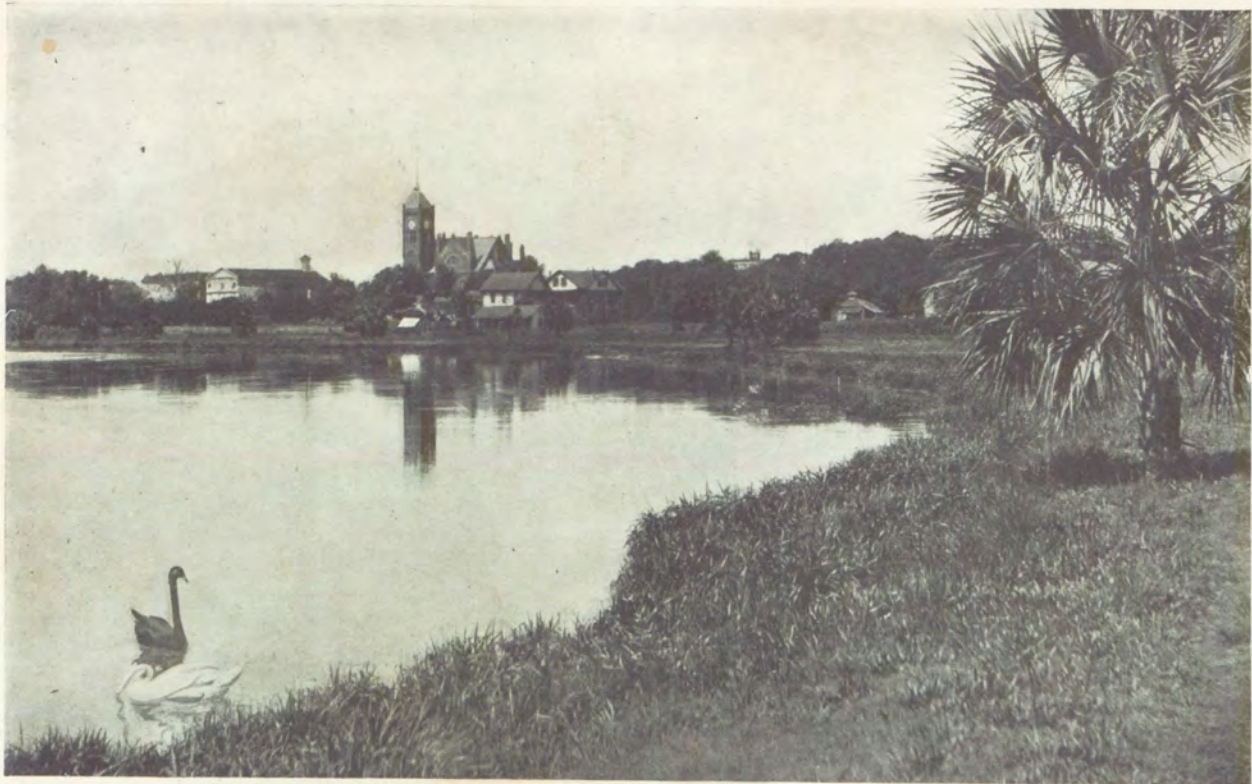
SECRETARY BOARD OF TRADE,
ORLANDO, FLA.



ORLANDO, THE CITY OF HOMES



GROUP OF PUBLIC BUILDINGS—COURT HOUSE, SOLDIERS' MONUMENT, ELKS' CLUB,
SAN JUAN HOTEL



LAKE EOLA WATER FRONT



NORTH ORANGE AVENUE: ROSALIND CLUB HOUSE



ATLANTIC COAST LINE DEPOT, CHURCH STREET



STATE BANK OF ORLANDO, CORNER ORANGE AND PINE STREETS



ORLANDO BANK AND TRUST COMPANY BANK, CORNER PINE AND ORANGE AVENUE



PART OF ORLANDO BUSINESS SECTION, LOOKING NORTH, ORANGE AVENUE



A CORNER OF LAKE LUCERNE—BEAUTIFUL DRIVE, LUXURIANT PALMS



GENERAL VIEW OF ORANGE COUNTY FAIR GROUNDS



SECTION OF CITRUS FRUIT EXHIBIT, ORANGE COUNTY FAIR



PART OF ANNUAL FLORAL AUTOMOBILE PARADE



SOUTH ORANGE AVENUE, LOOKING TOWARD LAKE LUCERNE



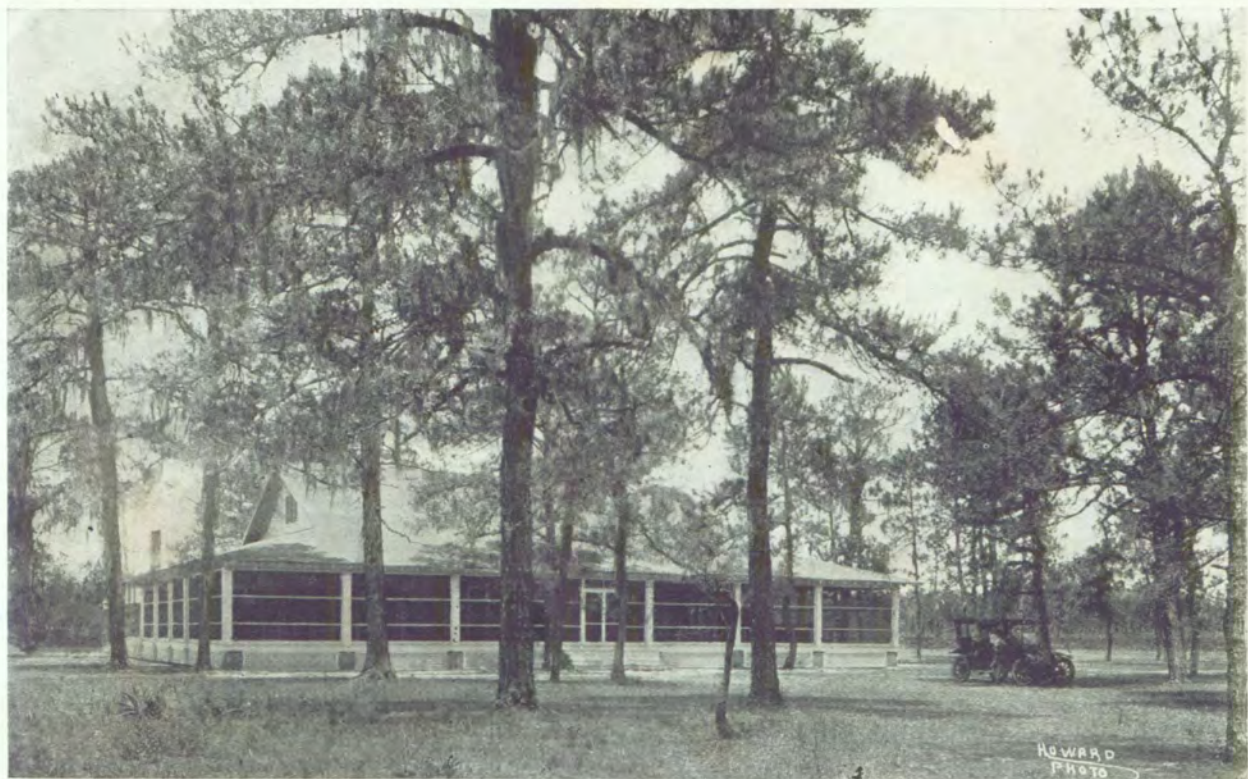
UNDERNEATH THE LIVE OAKS, EAST CHURCH STREET



VIEW FROM AN EAST CENTRAL AVENUE RESIDENCE, LAKE EOLA TO LEFT



SWAN ON LAKE LUCERNE



ORLANDO COUNTRY CLUB HOUSE



GROUP OF PALMS, RESIDENCE ON LUCERNE CIRCLE



GOLF LINKS, ORLANDO COUNTRY CLUB. BEST LINKS IN THE STATE



VIEW FROM SUBURBAN RESIDENCE



BIRDS'-EYE VIEW OF LAKE EOLA FROM COURT-HOUSE TOWER



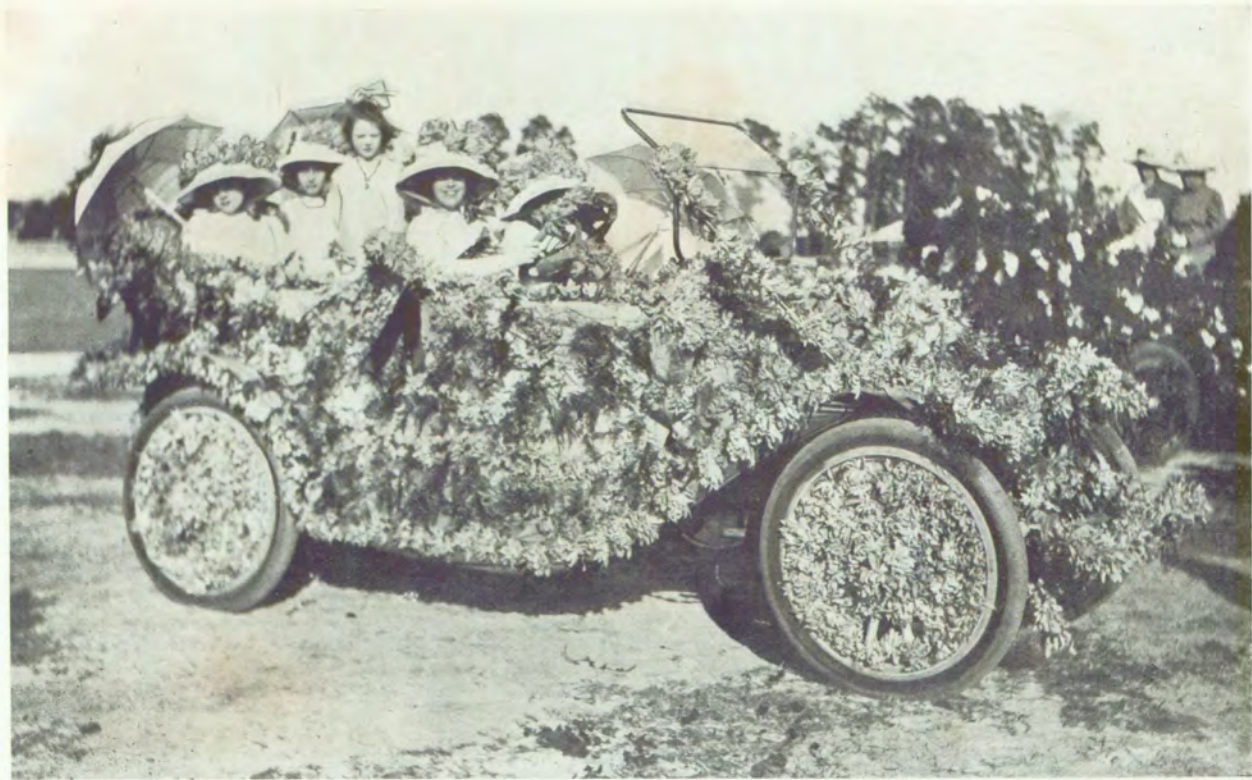
VIEW FROM SUBURBAN RESIDENCE, LAKE SUE



GLIMPSE OF LAKE HIGHLAND THROUGH THE PINES



LAKE SCENE, CENTER OF THE CITY. A SPECIMEN OF THE MANY CLEAR-WATER LAKES ABUNDING IN THE COUNTY, THIRTEEN OF WHICH ARE WITHIN THE CITY LIMITS



VIEW OF ANNUAL FLORAL AUTOMOBILE PARADE



VIEW OF ANNUAL FLORAL AUTOMOBILE PARADE



VIEW OF ANNUAL FLORAL AUTOMOBILE PARADE



SECTION OF LAKE LUCERNE CIRCLE



LAKE SUE FROM "THE RIPPLES"



STREET SCENE SHOWING GROUP OF BUNGALOWS



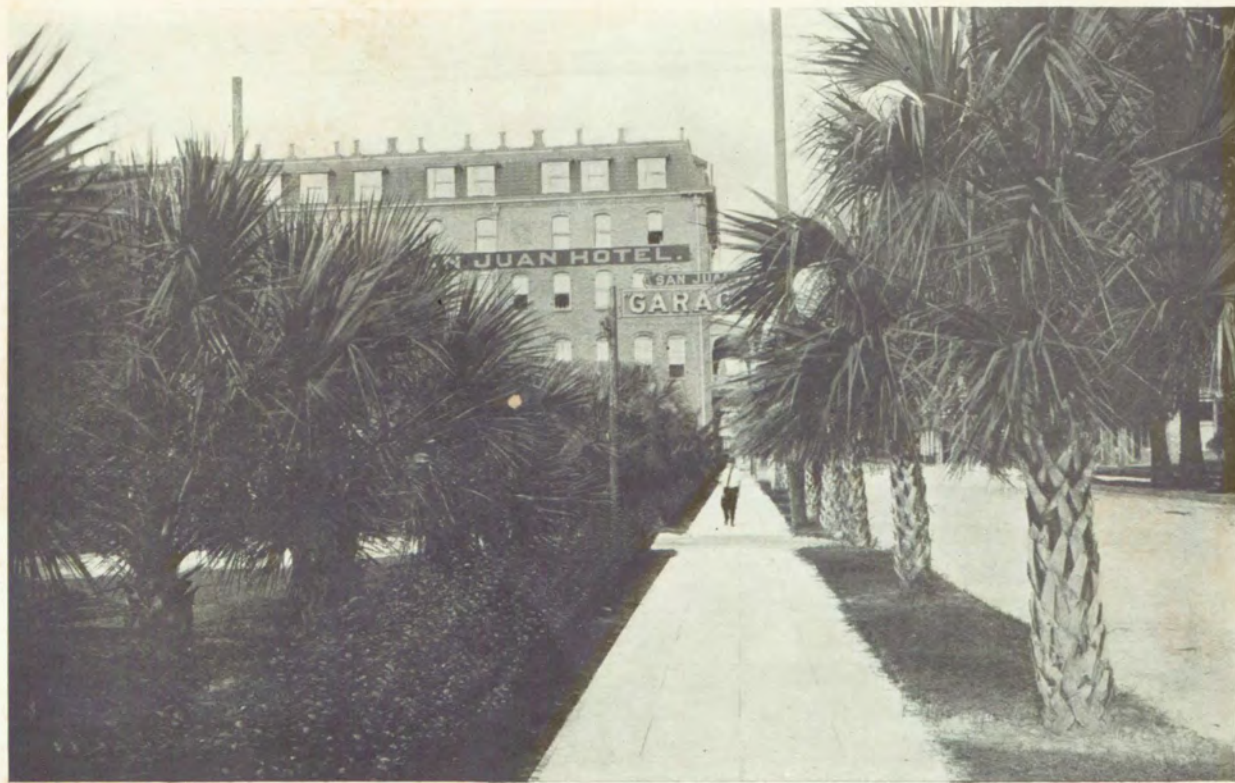
LAKE CHEROKEE



"DIXIE," A CHARACTERISTIC ORLANDO HOME



CORNER CHURCH AND WEST STREETS



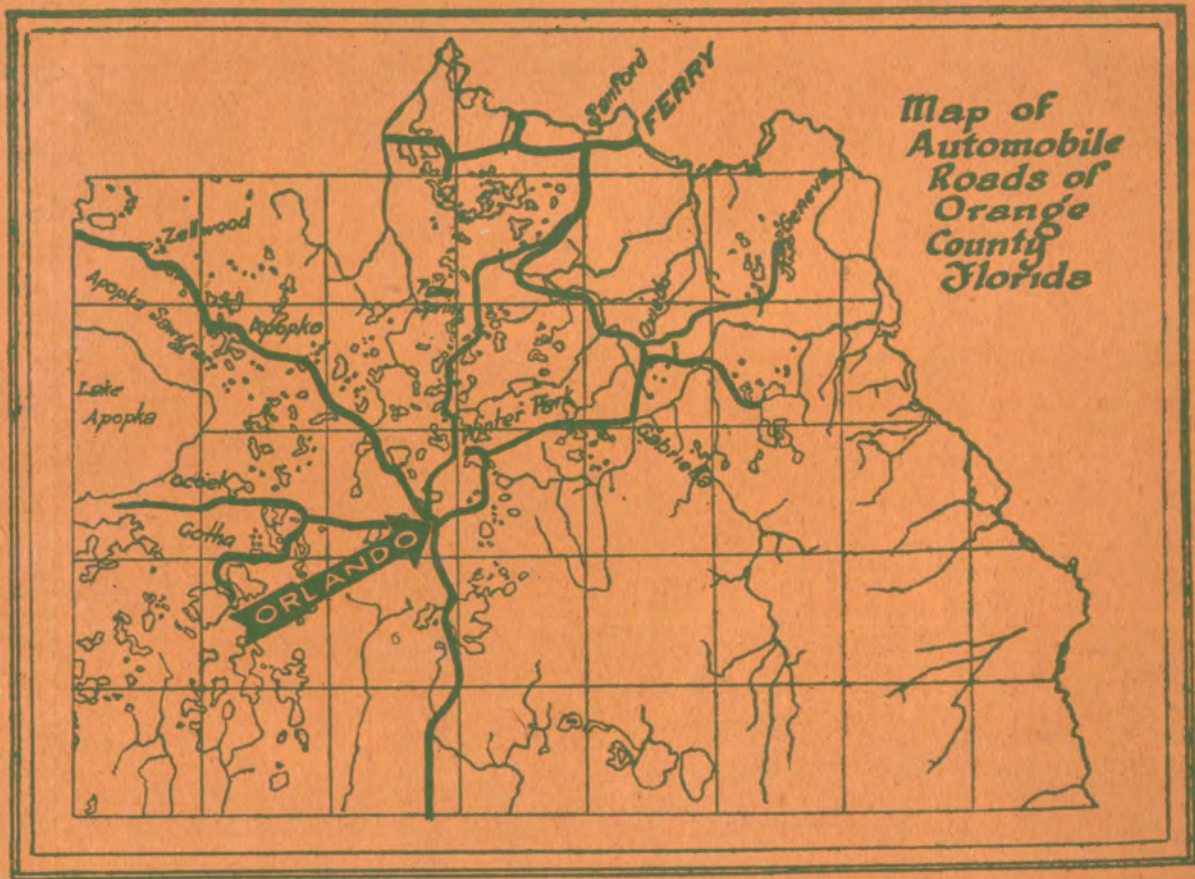
ENTRANCE TO CITY FROM SEABOARD RAILWAY



ROAD THROUGH THE PINE WOODS



YOUNG ORANGE GROVE, STARTED AMONG THE PINES



Map of
Automobile
Roads of
Orange
County
Florida

ORLANDO

BY C. ERNEST WADE

Orlando, fairest, under skies
That bend above and crystallize
Their constant gaze in mirroring lakes,
Thy beauty thrills the heart, and makes
Exultant thought and thankfulness
Spring into songs which gladly bless
The Fate that shows the path to thee.
Between the Poles, from sea to sea,
There is no spot which doth impress
As holding half thy loveliness.

Thy charm grows with the passing years;
Thy beauties multiply. No fears
Assail that Time shall ever bring
The pang of Disillusion's sting.
Thy many comforts which beguile
Are soothing as a mother's smile,
When o'er a sick-bed pillow bent.
Thy breezes seem from Heaven sent;
And, breathing messages of peace,
They bid all discontentments cease.

Copyright, 1910, by C. E. Wade.