

1-1-1960

## Bethune-Cookman College Booklet, undated

Bethune-Cookman University

Find similar works at: <https://stars.library.ucf.edu/cfm-texts>

University of Central Florida Libraries <http://library.ucf.edu>

This Catalog is brought to you for free and open access by the Central Florida Memory at STARS. It has been accepted for inclusion in Text Materials of Central Florida by an authorized administrator of STARS. For more information, please contact [STARS@ucf.edu](mailto:STARS@ucf.edu).

---

### Recommended Citation

Bethune-Cookman University, "Bethune-Cookman College Booklet, undated" (1960). *Text Materials of Central Florida*. 227.

<https://stars.library.ucf.edu/cfm-texts/227>

This booklet is the results of many requests for information from those individuals in high schools who prepare the applicant's transcript of credits for entrance to—

Bethune-Cookman College

---



**BETHUNE-COOKMAN COLLEGE**

DAYTONA BEACH, FLORIDA





DR. RICHARD V. MOORE  
President



DR. MARY McLEOD BETHUNE  
Founder, President-Emeritus





DR. RICHARD V. MOORE  
President



DR. MARY McLEOD BETHUNE  
Founder, President-Emeritus

---

---

## BETHUNE-COOKMAN COLLEGE

---

---

### **- RULES -**

Rules governing admission are made by the faculty and approved by the administration. New Students are carefully selected from the upper three-fifths of their graduating class. Borderline cases will be given tests if they are in the upper thirty percent of the four-fifths of their class.

### **CREDENTIALS**

If presented credentials have the requirements listed on the next page, applications for admission to Bethune-Cookman College will receive prompt attention. It is necessary to furnish a transcript of satisfactory high school work for fifteen units, as part of application.



Faith Hall



## - METHOD OF ADMISSION -

Application for admission should be made well in advance of the session in which the student wishes to enter the College. Applications will be considered in the order in which they are received. Final acceptance is determined on the basis of qualifications as outlined below. Every candidate for admission should file, at an early date the following credentials in the office of the Registrar.

1. Application blank with \$15.00 deposit.
2. Three letters of recommendation.
3. Physical examination blank.
4. High school transcript. (In the case of veterans, certificate of eligibility; in the case of transfer students, transcripts from all other college work.)

Admission to Bethune-Cookman College may be gained by:

1. Examination.
2. Certification of a minimum of 15 units of acceptable high school work from an approved high school.



White Hall

## - EXPENSES -

Total expenses aside from books and distinctly personal items are readily determined for our students.

### — RESIDENT STUDENT —

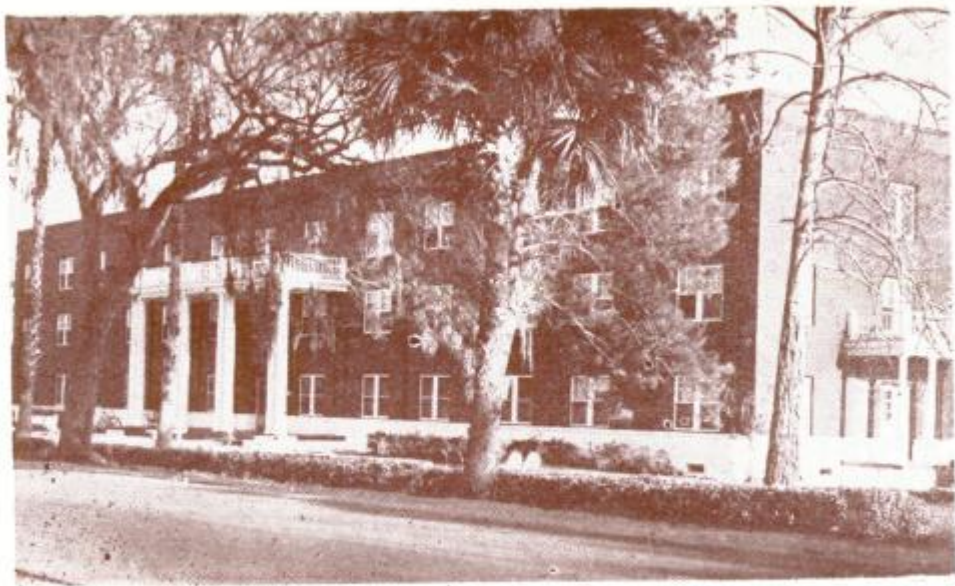
Tuition -----	\$195.00
Annual Fees -----	\$ 38.00
Activity Fee -----	5.00
Room, Board, Laundry -----	340.00
Total -----	\$578.00

### — NON-RESIDENT STUDENT —

Tuition -----	\$210.00
Annual Fees -----	\$ 38.00
Activity Fee -----	5.00
Total -----	\$253.00

The average student spends between \$350.00 and \$600.00 from the time he leaves home in the fall and returns home in June.

(For details see general catalog pp. 59-65)



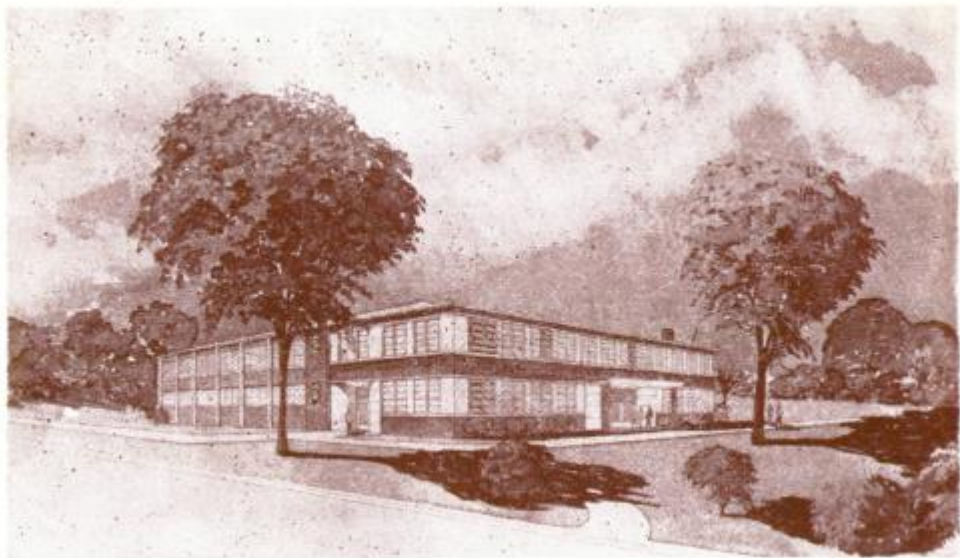
Cookman Hall

## UNIFORM DRESS

The College, from its inception, has stood for uniform dress for students, for special assemblies, believing it to be most economical, and the best means of training young people in habits of simplicity and good taste in dress.

On certain occasions students must wear uniform dress. We are asking that young ladies provide themselves with the following: One navy blue tailored coat suit; Two white tailored sport blouses (Winter). One white tailored coat suit (Summer); One pair of black oxfords with medium heels. (No plain white dresses, eyelet or embroidery, will be used in place of a white suit).

Young men are asked to provide themselves with the following, for uniform dress occasions: One navy blue suit; Three white shirts; One black tie; One pair of black shoes. (No gray, brown or striped suits will be used in the place of navy blue suits).



The Physical Education Building

## SCHOLARSHIPS

Bethune-Cookman College awards a number of scholarships on the basis of need, promise and ability. Some of the scholarships available to students are awarded directly by the donors, and administered through the Business Office of the College and the Committee on Student Aid and Scholarships.

The College offers students aid in the following ways:

1. Tuition Scholarships for Freshmen—A limited number of tuition scholarships for freshmen in the amount of \$150.00 each is available. These scholarships are awarded to the first, second or third ranking members of the high school graduating class of the current year upon recommendation of the high school principal. Only two scholarships are awarded each high school.

2. Part-Time Employment—Part-time employment is possible for a limited number of students in various campus jobs.

3. Full-Time Employment (5 year plan)—Students who find themselves financially unable to enter college may find it convenient to enter as full-time work students; that is work one year and go to school the following year.



Curtis Hall



UNFORTUNATELY, MANY APPLICANTS HAVE BEEN DENIED  
ADMISSION TO BETHUNE-COOKMAN COLLEGE

The following are the most common reasons why they were not accepted;

1. Applications were received too late.  
REMEDY—Mail complete application forms early.
2. Application forms were inaccurately and incompletely filled by applicant.  
REMEDY—Answer all questions on the application form. Supply photograph, complete physician's certificate and \$15.00 deposit at the time of application.
3. High School record was incomplete.  
REMEDY—Be sure that transcript is accurate.
4. Applicant was deficient in credits required or grades were too low for entrance.  
REMEDY—Consult your principal or consellor at the begining of each school year as to courses required for college entrance. The higher your rank in high school, the better your chance for acceptance.
5. Applicant desired courses not offered at Bethune-Cookman College.  
REMEDY—Consult your principal or counselor at the beginning of Note the courses offered before applying for entrance or write for information.



The College Bus

## STUDENT ORGANIZATIONS

Student activities at Bethune-Cookman College are controlled by the Students with the cooperation of the administration and faculty of the College. The authority of the student body is vested in the Student Council, which has for its purpose the control and management of student activities, the promotion of good fellowship and maintenance of good citizenship in the student body.

The College maintains a membership in the Southern Intercollegiate Athletic Conference. Football, Baseball, Basketball, and Tennis are engaged in on competitive basis. These activities are supplementary to the Physical Education program given in classes to all students. The ideal climate of the Halifax Country makes outdoor sports possible the year round.

Students with musical tastes are urged to join the Glee Club, Choral Ensemble, Band or Orchestra.

The Special Group is a musical organization composed of eighteen singers. It is so called because it renders special services to the institution. It is one of the most influential publicity media of the college. Prerequisites for membership include ability to sing in four part harmony, reliability, loyalty to the college, and pleasing personality.

Tra-Co-Dram, the Dramatic Club, is a non-credit, extra-curricular organization. Membership in the club is voluntary. A student must have an academic average of at least 1.5 in order to become a member.

Undergraduate chapters of the following Greek-Letter Organizations have been organized on the campus: Alpha Kappa Alpha Sorority; Alpha Phi Alpha Fraternity; Delta Sigma Theta Sorority; Kappa Alpha Psi Fraternity; Omega Psi Phi Fraternity; Phi Beta Sigma Fraternity; Sigma Gamma Rho Sorority; Zeta Phi Beta Sorority. Chapters of the Alpha Kappa Mu, National Honorary Society, and Beta Kappa Chi, National Honorary Scientific Society, have also been organized.

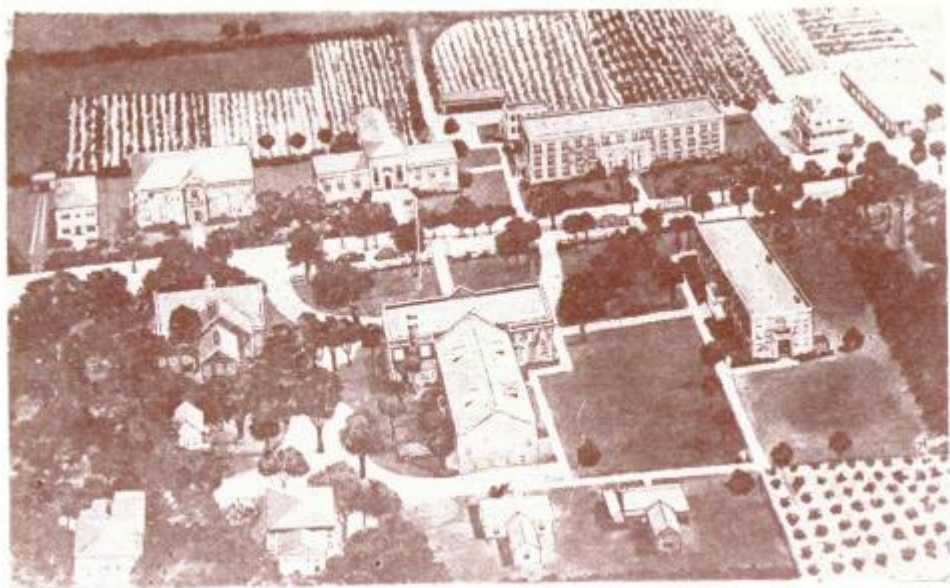
The moral and spiritual atmosphere of the campus is safeguarded by regular religious services and by the Young Men's Christian Association and the Young Women's Christian Association.

Non-Fraternal organizations are: Mummies, Zeniths, Cavaliers, Cavallettes, Farmerettes, NAACP, Departmental Clubs and Atomites, and Auto Mechanics.

## **MINIMUM DORMITORY NECESSITIES**

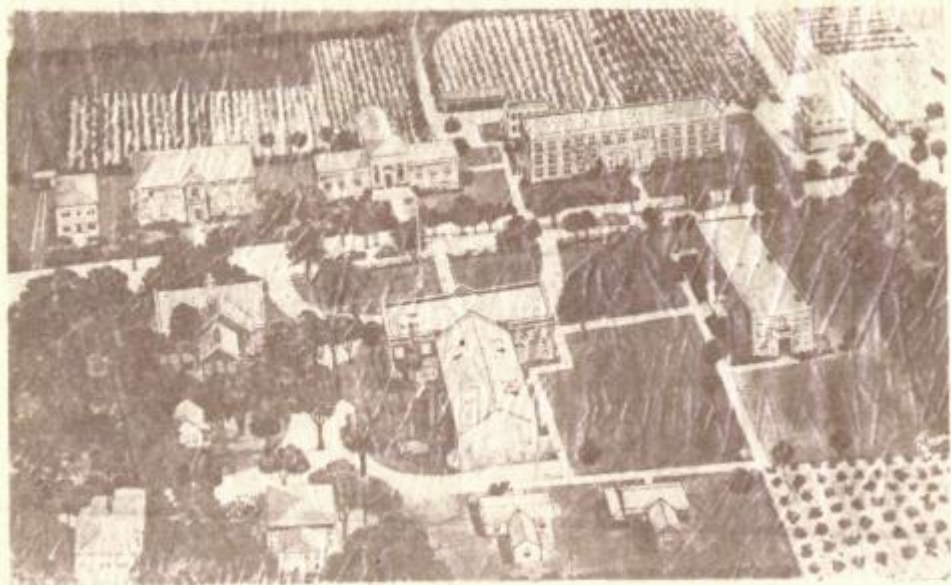
All students are required to bring with them the following items: 2 Bed spreads; 2 Dresser scarves; 2 Double blankets; 4 Single bed sheets; 4 Pillow cases; 2 Pair curtains; 1 Reading lamp.

Students are requested to bring in their hand luggage sufficient bedding to take care of immediate needs, pending the arrival of trunks. Only steamer trunks may be kept in the dormitory rooms. Others will be placed in the store-room. Because of the limited store-room space students are asked to bring small trunks.



Aerial View Of The Campus





Aerial View Of The Campus





# BETHUNE-COOKMAN COLLEGE

Daytona Beach, Florida

**IS:** Co-educational, fully accredited, recommended by leading educators.

**HAS:** Ten hundred twenty-five students, 105 instructors and employees, twenty-eight buildings, beautiful campus, all sports, unexcelled record for placing graduates in good positions.

**OFFERS:** B.A., B.S., and Trades certification.

Correspondence Concerning Admission Should Be Addressed To:

WILLIAM DuBOSE, *Registrar*

BETHUNE-COOKMAN COLLEGE

DAYTONA BEACH, FLORIDIA