

7-1-1909

John B. Stetson University Bulletin. Music, The Fine Arts, The Mechanic Arts

John B. Stetson University

Find similar works at: <https://stars.library.ucf.edu/cfm-texts>
University of Central Florida Libraries <http://library.ucf.edu>

This Catalog is brought to you for free and open access by the Central Florida Memory at STARS. It has been accepted for inclusion in Text Materials of Central Florida by an authorized administrator of STARS. For more information, please contact STARS@ucf.edu.

Recommended Citation

John B. Stetson University, "John B. Stetson University Bulletin. Music, The Fine Arts, The Mechanic Arts" (1909). *Text Materials of Central Florida*. 309.
<https://stars.library.ucf.edu/cfm-texts/309>



STETSON
LD
6407
1909/1910
SUPPL.4

Stetson University



3 4369 00458482 1

This book must not be taken from
the Library building.

--	--	--

378.73
J
v. 9, No. 3
Suppl.

John B. Stetson University Bulletin

Vol. IX.
Supplement to No. 3.

De LAND, FLA., JULY, 1909.

The University is located at DeLand, Volusia County, Florida. It is about one hundred miles south of Jacksonville, and twenty miles from the east coast. It may be reached by the Atlantic Coast Line Railway, the Florida East Coast Railway, or the St. Johns river. This site was chosen because it is on high pine land in a rolling country, not close to any stagnant water, in a section remarkable for its healthfulness, amid orange groves, peach orchards, native pine woods, and improved farming lands.

Music, The Fine Arts, The Mechanic Arts.

Announcement for 1909-1910.



Avenue Approaching Elizabeth Hall.



South Elizabeth Hall, the Conservatory Building.



THE AUDITORIUM AND PIPE ORGAN AT STETSON UNIVERSITY.

The Stetson School of Music.

FACULTY.

JOHN W. PHILLIPS,
INSTRUCTOR IN VOICE AND CHORUS DIRECTOR.
ALMA J. FARRIS, Mus. B.,
INSTRUCTOR IN PIANOFORTE
OLIVE B. ROSA,
(*New England Conservatory of Music.*)
INSTRUCTOR IN VIOLIN AND VOICE
GRACE MURCH, Mus. B.,
(*Chicago Musical College.*)
INSTRUCTOR IN THEORY AND HISTORY OF MUSIC
PHOEBE BAXTER,
(*Virgil Piano School.*)
INSTRUCTOR IN PIANO TECHNIC
EVA BAKER,
(*Graduate Stetson School of Music.*)
INSTRUCTOR IN PIPE ORGAN
LENA CONKLING,
(*Graduate Stetson School of Music.*)
INSTRUCTOR IN VOICE AND ENSEMBLE SINGING
MARGARET PHILLIPS,
(*Chicago Musical College.*)
ACCOMPANIST
MARY STEBBINS, A. B.,
MONITOR

GENERAL STATEMENT.

The School of Music offers thorough courses in all branches of music, including Singing, Piano, Or-

gan, Violin, Harmony, Theory, Musical History, sight singing, ensemble singing, etc., etc. The highest standard is constantly kept before the pupil, the best technical skill is developed, real musical expression is made a specialty by individual attention and instruction.

The graduation requirements include all that makes for thorough musicianship. A number of very interesting recitals have been planned for the coming year, and pupils will be required to attend and take part, thus equipping them thoroughly for public appearances. Two or more oratorios, entirely new to the South will be presented by the choral society, which any pupil, with a good voice, may join.

In short, the music student at Stetson, has opportunities for a broad education, musical and otherwise, that are not excelled by any other music school in the country.

PIANOFORTE.

The very best known methods of instruction are employed in developing perfect technical skill. The individual needs of the pupil are studied and special exercises are given where needed. The real meaning of music is made clear to the pupil, mu-



THE PARLORS OF CHAUDOIR HALL FOR YOUNG WOMEN.

sical temperament is awakened and developed, so that the student has a legitimate reason for hard and conscientious work, in touch, phrasing, pedaling and all the essentials that form sound piano musicianship. Candidates for graduation are obliged to pass a strict examination in piano playing, harmony and musical history.

SINGING.

Instruction in this department includes voice culture, based on the proper use of the breath—singing—which includes phrasing, articulation, expression, style, etc.

No ironclad method is forced on the pupil, but individual exercises, helpful suggestions, and encouragement guide the student to a practical knowledge of the singing voice and how to use it. Songs by the old masters and by the best modern composers are taught, and interpreted in a way that interests and inspires the pupil.

Pupils may take a course preparing them for opera or oratorio.

Candidates for graduation in singing, must also show some ability in Piano playing; they must also pass an examination in harmony and history of music, and must take one year of either German, French or Italian.

ORGAN.

In the Organ Department is offered a thorough and complete course in the best schools of organ

music. The great three-manual instrument in the Auditorium is used for practice and lessons. Interesting organ recitals are given during the year, thus affording opportunity of hearing the best organ music both old and new.

Students must show ability in piano playing before commencing the study of the Organ.

THEORY.

This study includes harmony, counterpoint, canon and fugue, instrumentation, acoustics, musical form and history of music. An especially thorough course in musical analysis and history of music is offered and this is strongly recommended to the student of music.

VIOLIN.

The best known method is used in the teaching of this instrument. Good tone, good technic, both in fingering and bowing, artistic phrasing and expression are given individual attention. Opportunities for ensemble work under an experienced leader, are many. Recitals also are frequent. The course includes studies from the music of the masters and includes Sonatas and Concertos by Haydn, Mozart, Mendelssohn, Schubert, Grieg and others.

ENSEMBLE WORK.

Classes in practical sight singing are under the direction of the vocal teacher. The course is graded and credits for the work are given in the Music and Normal courses.



THE ORCHESTRA AT STETSON UNIVERSITY.

The Stetson Glee Club is made up of a number of young men carefully selected and thoroughly trained by the vocal teacher. Students of any department of the University are eligible for membership. Trips are made to all parts of the State, and the best music only, serious and humorous, is used. There are a few vacancies in the tenor division of the Glee Club. Applications should be made to the vocal teacher when school opens.

The University Choral Society includes in its membership both students and citizens of the town. In the rendering of the great oratorios and other works the student gains experience and musical knowledge that is invaluable. For the coming season "The Legend of St. Christopher" by Rheinberger, and "The Swan and the Skylark," by Goring-Thomas, have been selected. In addition the "Messiah" will be given its yearly performance.

Of great importance and help to the student is the Vesper Choir. Membership is open to those with good voices and musical ability. Opportunities for solo work, duets, quartets, and the singing of Anthems and inspiring choruses of a high-class order, are given. The Vesper Choir is very popular and its singing is much enjoyed by the large audiences that gather in the Auditorium every Sunday afternoon during the school year.

Material Equipment.

The Stetson School of Music is housed in a beautiful and elegantly furnished modern building. It has fifteen pianos and numerous practice rooms. The pipe organ is a three-manual instrument, blown by water power and furnished with the most complete appointments. The University Auditorium is the most beautiful concert hall in Florida.

The Dormitories.

There are a number of beautiful dormitories for young men and young women on the Stetson Campus. Student residents in these halls enjoy the best of home comforts and the authorities in charge aim to so administer the affairs of these halls as to safeguard the students in every possible way.

Room Reservation, Expenses, Etc.

A request addressed to Stetson University, DeLand, Fla., will bring full information concerning dormitory regulations and the reservation of rooms, also a detailed statement of expenses for board, room, tuitions, etc.

The University invites correspondence with prospective students and patrons.



THE GENERAL ART STUDIO AT STETSON UNIVERSITY.

The School of Fine Arts.

EMMA MOREHEAD WHITFIELD, A. B., DIRECTOR.

THE OBJECT of this school is to train the powers of observation, to enable students to learn to draw correctly from the living model and from nature, to gain some skill in the expression of ideas, and to learn to appreciate the beautiful.

(1) A REGULAR COURSE of four years is offered for those who desire to make a profession of art in some line, such as portrait, landscape and decorative painting, composition, modeling and illustration, or for those who wish to prepare for teaching. Examinations will be given at the close of each session and, to those completing the course, a certificate of proficiency will be granted.

(2) SPECIAL COURSES are offered to students who are interested in art for culture and for their own pleasure. No certificate is given in these courses.

THE REGULAR COURSE—FIRST YEAR—Perspective principles, elementary composition, drawing in charcoal, and painting in one color from casts, objects and still-life groups.

SECOND YEAR—Water color painting from still life, fruits and flowers; study of color values as related to the neutral scale and spectrum; perspective, composition and design. Students wishing to study illustration may substitute pen and ink, wash drawing and harmony in black and white, for water color painting and color value.

THIRD YEAR—Oil painting from nature, fruits, flowers, and still life; composition and design—color values. Students studying for illustration work may substitute pen and ink and wash drawing from nature, still-life and costume model for oil painting and study of color values.

FOURTH YEAR—Posing model, drawing and painting from life—the head and full length figure of draped models. Modeling in clay may be substituted in this year for painting.

One year in history of art is required for the completion of the course leading to the certificate. This may be taken by students in any class.

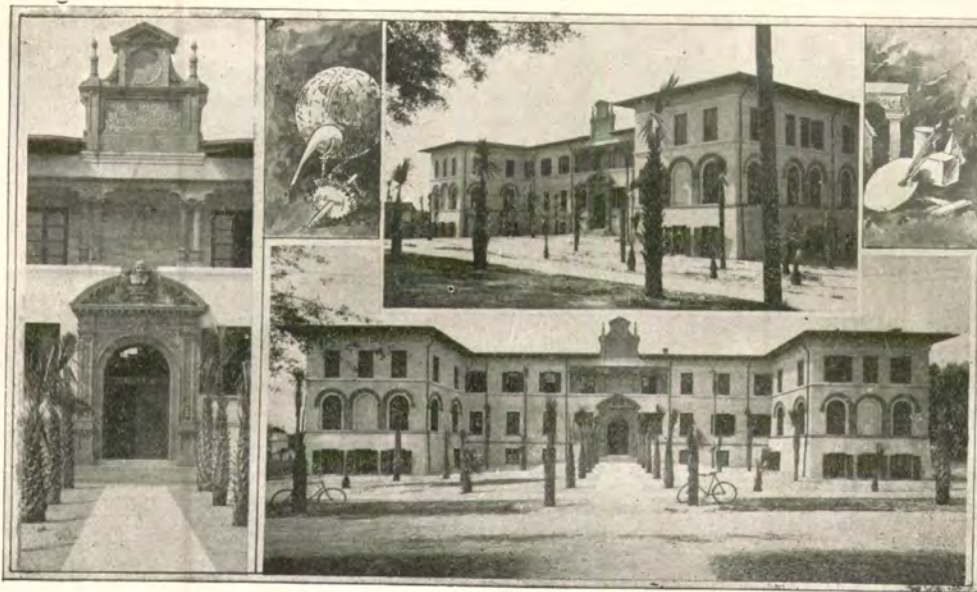
SPECIAL COURSES—Water color and oil painting from nature and good models by old and modern masters. Composition, tapestry and china painting. Pen and ink drawing. History of art. Some knowledge of drawing will be required of pupils registering for any special course except History of Art. Costume sketch class one hour a week to which members of all classes are admitted to sketch from life.

In December and March public concours are held in the studio when the best work done by students in the preceding months is hung for exhibition.

The best work of the pupils is held through the year by the Director of the Art Department for the final exhibition during Commencement week, and then returned to them.

Upon the discretion of the Director of the Art Department one study from each pupil may be retained permanently by the University.

For detailed information concerning expenses write to Stetson University, DeLand, Fla.



VIEWS OF SCIENCE HALL, STETSON UNIVERSITY.

SCIENCE HALL.

This building is devoted principally to Technology and the Mechanic Arts. It is 200 feet long and 80 feet wide. With its furnishings it represents an expenditure of more than \$60,000.00.

The basement floor contains the shops for wood and iron working and Manual Training; the second floor contains the laboratories for Chemistry and Physics, and the north wing of the third floor contains the Mechanical Drawing rooms and Art studios.

School of Mechanic Arts.

FACULTY.

The members of the faculty in the School of Mechanic Arts are all specialists in their various lines of work. They were trained in the Boston School of Technology, Cornell University, Columbia University, University of Chicago and other well known institutions.

THE AIM.

The School of Mechanic Arts aims to lay a strong foundation both in theory and manual practice for those looking forward to work as electricians, linemen, draftsmen, telegraph and telephone inspectors, stationary and locomotive engineers, superintendents, contractors, machinists, tool makers, pattern makers, builders of machinery, boiler makers, inventors, salesmen, dealers, foremen, carpenters, joiners, bridge builders, structural workers, plumbers, steam fitters, gas fitters, mechanics, apprentices and students.

The course in this school covers four years' work. On its completion the student may enter upon a useful career or he may go into the College for advanced work in Technology to prepare for a professional career. (For outline of College courses in Technology, see Stetson general catalog.)

ENTRANCE REQUIREMENTS.

No student will be admitted to the course in Mechanic Arts who has not fully completed the work of a standard grammar school or its equivalent.

CURRICULUM.

The courses of study have been planned with reference to their educational value and it has been the aim to make them intensely practical by basing the work largely on the laboratory method of instruction. They include shop work in wood and iron, practical laboratory demonstrations of the fundamental principles of physics and chemistry, desk work in mechanical, technical, machine and perspective drawing and practical application of the essential principles of mathematics.

Shop Work in Wood.

Following is a full outline of the work given in the shops.

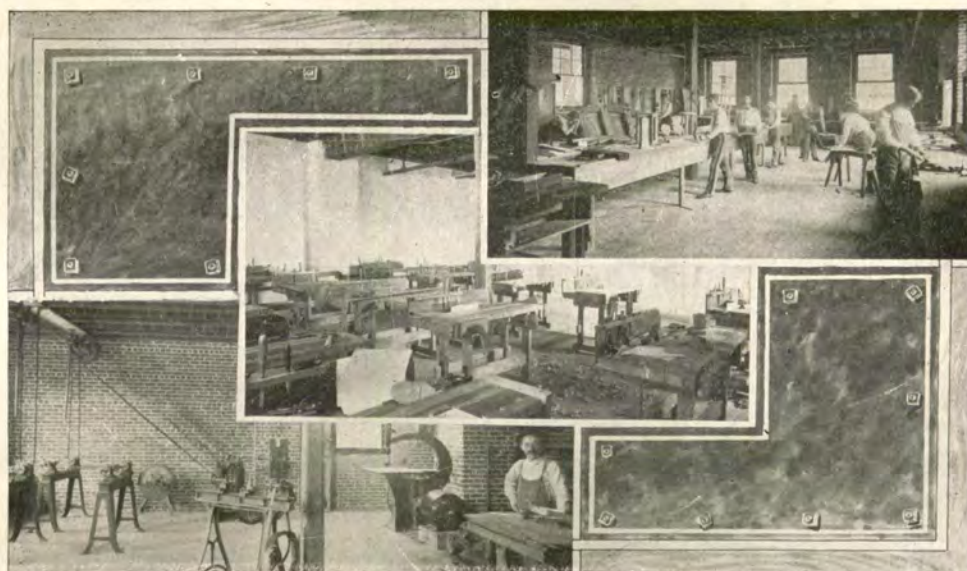
PATTERN MAKING—Material; Kinds of Wood; Warping; Twisting; Tools; Saw; Plane; Chisel; Gouge; Square; Gauges; Compasses; Calipers; Machines; Trimmer; Grindstone; Molding; Construction of Pattern; Working from Drawings; Shrinkage; Draft; Rappage; Simple Patterns; Bushing; Finishing Patterns; Shellac; Sand Paper; Gluing; Hand Screws; Pulley; Segments; Hand Wheel; Metal Patterns; Engine Crank; Disc Crank; Lathe Chuck; Large Cylinders; Engine Cylinders; Globe Valve; Gear Wheels; Templates; Patterns for Bevel Gears; Columns.

CARPENTRY AND JOINERY—Timber; Shake; Knots; Quarter Sawing; Seasoning; Kinds of Wood; Uses; Framed Structures; Joints; Sills; Posts; Studs; Bridging; Flooring; Partitions; Lathing; Trussed Partitions; Roofs; Jack Rafters; Hip and Valley; Mansard; Gables; Construction of Roofs; Shingles; Flashings; Balloon Framing; Siding; Verandas; Arches; Ceiling; Joinery; Joints; Tongue and Groove; Dove-tail; Dowel; Mortise and Tenon; Interior Work; Wainscots; Paneling; Door Making; Sliding and Folding Doors; Windows; Sashes; Glass; Splayed Work; Bending Wood; Veneering; Blinds; Hinges; Interior Work.



CARNEGIE LIBRARY, STETSON UNIVERSITY.

With the completion of the New Dormitory for young men, the University will be prepared at the opening of the fall term, September 29th, to provide ample and suitable accommodations for all who are likely to apply. Young men desiring to reserve rooms in advance in Stetson Hall, in the New Dormitory, in East House, or in any of the Cottage Dormitories, should address Stetson University, DeLand, Fla.



MANUAL TRAINING AND WOOD WORKING SHOPS.

SHOP WORK IN IRON.

Following is a full outline of the work given in the shops:

MACHINE SHOP WORK—Hand Tools; Hammer; Center Punch; Surface Gauge; Scales; Calipers; Micrometer; Vernier Micrometer; Gauges; Chisels; Files and Filing; Drills; Reamers; Taps and Dies; Lathes and Tools; Chucks; Dogs; Mandrels; Centering; Turning Tools; Turning; Tool Posts; Boring Tools; Cutting Speed; Turning a Taper; Taper Attachment; Eccentric Turning; Boring; Boring Bars; Screw Cutting; Toils; Lead Screw; Gears; Compound Lathe; Chasing. Drilling in Lathe; Drill Press; Drilling; Holding Work; Planer; Tools; Plate Planer; Shaper and Slotter; Milling Machine; Mills; Speed of Mills; Grinding; Laying out Work; Shop Suggestions; Drilling Hard Metals; Fitting Brasses; Fluting Rollers; Pickling; Lining up Shafting.

TOOL MAKING—Measuring Instruments; Annealing; Hardening and Grinding Twist Drills; Reamers; Kinds; Cutting Edges; Straightening; Grinding; Adjustable Reamers; Reamer Holders; Expanding Mandrels; Eccentric Arbors; Milling Machine Arbors; Taps; Flutes; Hardening; Screw Die Hobs; Releasing Tap Holders; Screw Cutting Dies; Cut-

ting Edges; Clearance; Spring Screw Threading Dies; Die Holders; Counterbores; Facing Tool with Inserted Cutter; Inserted Pilots; Combination Counterbores; Hollow Mills; Forming Tools; Holders; Milling Cutters; Teeth; Hardening and Grinding Hole to Size; Interlocking Nickel and Inserted Teeth; End Mills; Spiral Mills; T-slot Cutters; Drill Jigs; Stab Jigs; Bushings; Legs; Leaf; Box Jigs; Punch and Die Work; Guide; Stripper; Gauge Pin; Shear; The Punch; Laying Out; Shear; Locating Pins; Bending Dies; Forming Dies; Gauges.

THEORETICAL AND APPLIED.

ENGLISH—Two years' solid academic work.

FRENCH OR GERMAN—Two years' solid academic work.

ALGEBRA—Elementary and Advanced.

GEOMETRY—Plane, Solid and Spherical.

MECHANICAL DRAWING—Covering two years' work.

HIGHER MATHEMATICS AND SURVEYING—Covering one year's work.

MACHINE DESIGN—Covering one year's work.

CHEMISTRY—Covering one years' work in class and laboratory.

PHYSICS—Covering one years' work in class and laboratory.



STETSON HALL GROUP—1908-09.

EXPENSES.

The scholastic year consists of thirty-three weeks, divided into three term, the fall term of twelve weeks, the winter term of twelve weeks, and the spring term of nine weeks. All bills are payable strictly in advance at the beginning of each term.

The list of expenses for board and tuition and for materials used in the shops is fully outlined in the general university catalog. A detailed statement will be furnished on application to STETSON UNIVERSITY, DeLand, Fla.

John B. Stetson University

LINCOLN HULLEY, Ph.D., Litt.D., LL.D., President.
De Land, Fla.

The Institution Maintains the following Colleges and Schools:

A College of Liberal Arts whose standards of admission and scholarship are so high that the University of Chicago entered into organic affiliation with it in recognition of its standard. Full credit is given in either institution for work done in the other.

A College of Law, whose curriculum covers a period of two years, thirty-three weeks each, and which confers the degree LL. B. upon its completion.

A Preparatory Academy that offers a four-year college preparatory course and whose graduates are expected to enter, and do enter, the best universities of the land - Harvard, Chicago, Yale, Michigan, Cornell, Pennsylvania and others.

A Business College whose excellence admitted it into the Eastern League composed of a select number of the high grade business colleges of the Eastern States.

A Normal School and Teachers' College designed especially to prepare teachers for Florida schools. It has in connection with it a well organized Model School, including a Kindergarten, Primary School and select Grammar School.

A School of Mechanic Arts intended to qualify young men for the vast industrial developments unfolding in Florida.

A School of Music organized on the high plane of the great conservatories where the highest standards are set, and where excellence and quality only are honored.

A School of Fine Arts. Beautiful studios, costly models, casts, etc.

Stetson has a faculty of 49 professors and instructors. They hold degrees from the University of Chicago, Harvard, Yale, Cornell, Dartmouth, Columbia, Toronto, Wake Forest, Louisville, Bowdoin, Utrecht Bucknell, University of Michigan, Dennison and other Universities. There are almost \$400,000.00 in buildings and equipment; a productive endowment of \$300,000.00; an endowed library of over 15,000 volumes; a beautiful chapel with costly furnishings, including stained glass windows, 7 oil paintings, a \$10,000.00 pipe organ; a gymnasium with complete apparatus; an enclosed Athletic Field, running track, tennis courts, baseball diamond and gridiron, besides golf, rowing and other sports; separate buildings for men and women; ten large laboratories for Chemistry, Physics, Bacteriology, Mineralogy and Biology; several large museums and shops; electric lights, electric bells, steam heat, cement walks, shell roads, broad avenues, spacious campus, shrubbery and trees; social, literary, musical and other students' clubs; star lecture courses; Christian and not sectarian teaching. The location is beautiful and healthful, and the expenses are low.

FOR CATALOGS, VIEWS, FOLDERS AND INFORMATION, ADDRESS

STETSON UNIVERSITY, De LAND, FLORIDA.

