

7-1-1912

John B. Stetson University Bulletin. Music, The Fine Arts, Elocution and The Mechanic Arts

John B. Stetson University

Find similar works at: <https://stars.library.ucf.edu/cfm-texts>
University of Central Florida Libraries <http://library.ucf.edu>

This Catalog is brought to you for free and open access by the Central Florida Memory at STARS. It has been accepted for inclusion in Text Materials of Central Florida by an authorized administrator of STARS. For more information, please contact STARS@ucf.edu.

Recommended Citation

John B. Stetson University, "John B. Stetson University Bulletin. Music, The Fine Arts, Elocution and The Mechanic Arts" (1912). *Text Materials of Central Florida*. 318.
<https://stars.library.ucf.edu/cfm-texts/318>



John B. Stetson University Bulletin

Vol. IX.
Supplement to Law Bulletin No. 3.

De LAND, FLA., JULY, 1912.

The University is located at DeLand, Volusia County, Florida. It is about one hundred miles south of Jacksonville, and twenty miles from the east coast. It may be reached by the Atlantic Coast Line Railway, the Florida East Coast Railway, or the St. Johns river. This site was chosen because it is on high pine land in a rolling country, not close to any stagnant water, in a section remarkable for its healthfulness, amid orange groves, peach orchards, native pine woods, and improved farming lands.

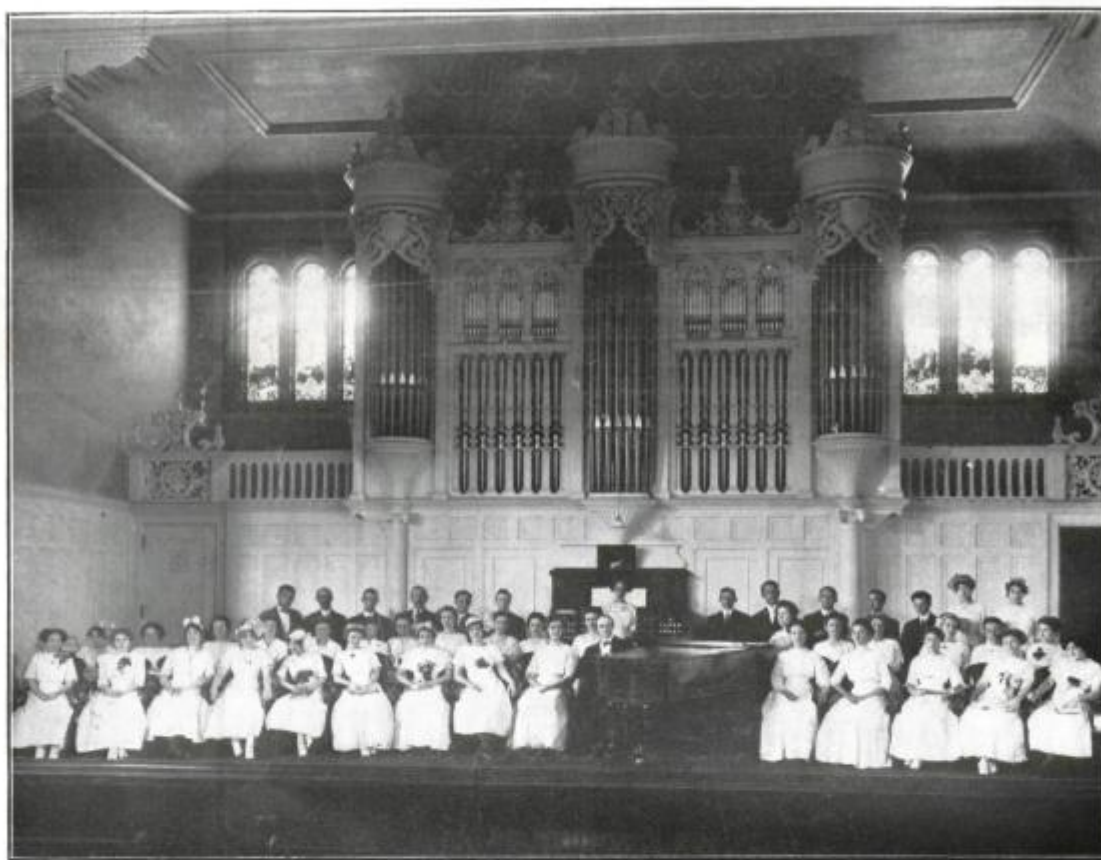
Music, The Fine Arts, Elocution and The Mechanic Arts.

Announcement for 1912-1913



The Dramatic Club giving a French play under the direction of the Professor of French and Professor Stover of the Elocution Department.

Published by the John B. Stetson University as frequently as four times a year, in accordance with the provisions of the Act of Congress of July 16, 1894. Entered as second-class matter at the post-office at DeLand, Florida. Issued Quarterly.



The Vesper Choir Under the Direction of Prof. Phillips, Head of the Music Department

The Stetson School of Music.

FACULTY

JOHN W. PHILLIPS,

INSTRUCTOR IN VOICE AND CHORUS, DIRECTOR.

ZOE VIRGINIA SINNOTT,

(Pupil of Sherwood.)

INSTRUCTOR IN PIANOFORTE

OLIVE B. ROSA,

(New England Conservatory of Music.)

INSTRUCTOR IN VIOLIN AND VOICE

MARGARET PHILLIPS,

(Chicago Music College.)

HARMONY AND COUNTERPOINT.

EVA BAKER,

(Graduate Stetson School of Music.)

INSTRUCTOR IN PIPE ORGAN.

MARY LANDES BUTTORFF,

(Graduate Stetson School of Music.)

INSTRUCTOR IN VOICE AND ENSEMBLE SINGING

MARY STEBBINS, A. B.,

VOICE

GENERAL STATEMENT.

The School of Music offers thorough courses in all branches of music, including Singing, Piano, Or-

gan, Violin, Harmony, Theory, Musical History, sight singing, ensemble singing, etc., etc. The highest standard is constantly kept before the pupil, the best technical skill is developed, real musical expression is made a specialty by individual attention and instruction.

The graduation requirements include all that makes for thorough musicianship. A number of very interesting recitals have been planned for the coming year, and pupils will be required to attend and take part, thus equipping them thoroughly for public appearances. Two or more oratorios, entirely new to the South, will be presented by the choral society, which any pupil, with a good voice, may join.

In short, the music student at Stetson has opportunities for a broad education, musical and otherwise, that are not excelled by any other music school in the country.

PIANOFORTE.

The very best known methods of instruction are employed in developing perfect technical skill. The individual needs of the pupil are studied and special exercises are given where needed. The real meaning of music is made clear to the pupil, musical tem-



The Parlors of Chaudoir Hall, for Young Women

perament is awakened and developed, so that the student has a legitimate reason for hard and conscientious work, in touch, phrasing, pedalling and all the essentials that form sound piano musicianship. Candidates for graduation are required to pass a strict examination in piano playing, harmony and musical history.

SINGING.

Instruction in this department includes voice culture—breath—singing ion, expression,

du Pont-Ball Library
of
Stetson University



the pupil, but stions, and en- practical knowl- use it. Songs modern compos- way that inter- g them for op-

g ing must also they must also nd history of ither German,

ed a thorough ools of organ

music. The great three-manual instrument in the Auditorium is used for practice and lessons. Interesting organ recitals are given during the year, thus affording opportunity of hearing the best organ music both old and new.

Students must show ability in piano playing before commencing the study of the Organ.

THEORY.

This study includes harmony, counterpoint, canon and fugue, instrumentation, acoustics, musical form and history of music. An especially thorough course in musical analysis and history of music is offered and this is strongly recommended to the student of music.

VIOLIN.

The best known method is used in the teaching of this instrument. Good tone, good technic, both in fingering and bowing, artistic phrasing and expression are given individual attention. Opportunities for ensemble work, under an experienced leader, are many. Recitals also are frequent. The course includes studies from the music of the masters and includes Sonatas and Concertos by Haydn, Mozart, Mendelssohn, Schubert, Grieg and others.

ENSEMBLE WORK.

Classes in practical sight singing are under the direction of the vocal teacher. The course is graded and credits for the work are given in the Music and Normal courses.

DO NOT REMOVE
FROM LIBRARY

The Stetson Glee Club

The Stetson Glee Club is made up of a number of young men carefully selected and thoroughly trained by the vocal teacher. Students of any department of the University are eligible for membership. Trips are made to all parts of the State, and the best music only, serious and humorous, is used. There are a few vacancies in the tenor division of the Glee Club. Applications should be made to the vocal teacher when school opens.

The University Choral Society includes in its membership both students and citizens of the town. In the rendering of the great oratorios and other works the student gains experience and musical knowledge that is invaluable. For the coming season "The Legend of St. Christopher" by Rheinberger, and "The Swan and the Skylark," by Goring-Thomas, have been selected. In addition the "Messiah" will be given its yearly performance.

Of great importance and help to the student is the Vesper Choir. Membership is open to those with good voices and musical ability. Opportunities for solo work, duets, quartets, and the singing of anthems and inspiring choruses of a high-class order, are given. The Vesper Choir is very popular and its singing is much enjoyed by the large audiences that gather in the Auditorium every Sunday afternoon during the school year.

Material Equipment.

The Stetson School of Music is housed in a beautiful and elegantly furnished modern building. It has fifteen pianos and numerous practice rooms. The pipe organ is a three-manual instrument, blown by water power and furnished with the most complete appointments. The University Auditorium is the most beautiful concert hall in Florida.



Serenaders in the Bell Tower

The Dormitories.

There are a number of beautiful dormitories for young men and young women on the Stetson Campus. Student residents in these halls enjoy the best of home comforts and the authorities in charge aim to so administer the affairs of these halls as to safeguard the student in every possible way.

Room Reservation, Expenses, Etc.

A request addressed to Stetson University, DeLand, Fla., will bring full information concerning dormitory regulations and the reservation of rooms, also a detailed statement of expenses for board, room, tuitions, etc.

The University invites correspondence with prospective students and patrons.

The School of Fine Arts.

MISS WILMA DAVIS, A. B., DIRECTOR.

THE OBJECT of this school is to train the powers of observation, to enable students to learn to draw correctly from the living model and from nature, to gain some skill in the expression of ideas, and to learn to appreciate the beautiful.

(1) A REGULAR COURSE of four years is offered for those who desire to make a profession of art in some line, such as portrait, landscape and decorative painting, composition, modeling and illustration, or for those who wish to prepare for teaching. Examinations will be given at the close of each session and, to those completing the course, a certificate of proficiency will be granted.

(2) SPECIAL COURSES are offered to students who are interested in art for culture and for their

substitute pen and ink and wash drawing from nature, still life and costume model for oil painting and study of color values.

FOURTH YEAR—Posing model, drawing and painting from life—the head and full length figure of draped models. Modeling in clay may be substituted in this year for painting.

One year in history of art is required for the completion of the course leading to the certificate. This may be taken by students in any class.

SPECIAL COURSES—Water color and oil painting from nature and good models by old and modern masters. Composition, tapestry and china painting. Pen and ink drawing. History of art. Some knowledge of drawing will be required of pupils



Two Views of the Fine Arts Rooms

own pleasure. No certificate is given in these courses.

THE REGULAR COURSE—FIRST YEAR—Perspective principles, elementary composition, drawing in charcoal, and painting in one color from casts, objects and still-life groups.

SECOND YEAR—Water color painting from still life, fruits and flowers; study of color values as related to the neutral scale and spectrum; perspective, composition and design. Students wishing to study illustration may substitute pen and ink, wash drawing and harmony in black and white, for water color painting and color value.

THIRD YEAR—Oil painting from nature, fruits, flowers, and still life; composition and design—color values. Students studying for illustration work may

registering for any special course except History of Art. Costume sketch class one hour a week to which members of all classes are admitted to sketch from life.

In December and March public concours are held in the studio when the best work done by students in the preceding months is hung for exhibition.

The best work of the pupils is held through the year by the Director of the Art Department for the final exhibition during Commencement week, and then returned to them.

Upon the discretion of the Director of the Art Department one study from each pupil may be retained permanently by the University.

For detailed information concerning expenses write to Stetson University, DeLand, Fla.

School of Mechanic Arts.

FACULTY.

The members of the faculty in the School of Mechanic Arts are all specialists in their various lines of work. They were trained in the Boston School of Technology, Wisconsin University, Columbia University, University of Chicago and other well known institutions.

THE AIM.

The School of Mechanic Arts aims to lay a strong foundation both in theory and manual practice for those looking forward to work as electricians, linemen, draftsmen, telegraph and telephone inspectors, stationary and locomotive engineers, superintendents, contractors, machinists, tool makers, pattern makers, builders of machinery, boiler makers, inventors, salesmen, dealers, foremen, carpenters, joiners, bridge builders, structural workers, plumbers, steam fitters, gas fitters, mechanics, apprentices and students.

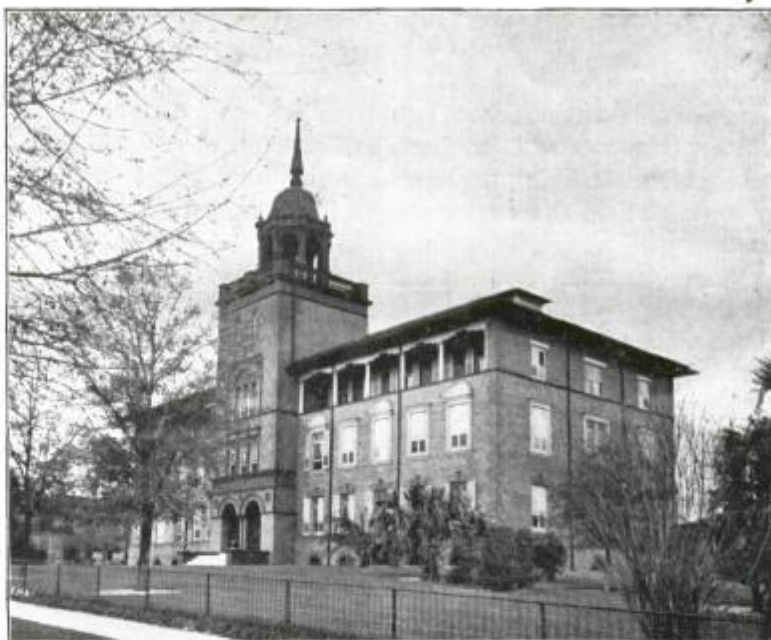
The course in this school covers four years' work. On its completion the student may enter upon a useful career or he may go into the College for advanced work in Technology to prepare for a professional career. (For outline of college course in Technology, see Stetson general catalog.)

ENTRANCE REQUIREMENTS.

No student will be admitted to the course in Mechanic Arts who has not fully completed the work of a standard grammar school or its equivalent.

CURRICULUM.

The courses of study have been planned with reference to their educational value and it has been the aim to make them intensely practical by basing the



Elizabeth Hall in 1896

work largely on the laboratory method of instruction. They include shop work in wood and iron, practical laboratory demonstrations of the fundamental principles of physics and chemistry, desk work in mechanical, technical, machine and perspective drawing and practical application of the essential principles of mathematics.

Shop Work in Wood.

Following is a full outline of the work given in the shops:

PATTERN MAKING—Material; Kinds of Wood; Warping; Twisting; Tools; Saw; Plane; Chisel; Gouge; Square; Gauges; Compasses; Calipers; Machines; Trimmer; Grindstone; Molding; Construction of Pattern; Working from Drawings; Shrinkage; Draft; Rappage; Patterns; Bushing; Finishing Patterns; Shellac; Sand Paper; Gluing; Hand Screws; Pulley; Segments; Hand Wheel; Metal Patterns; Engine Crank; Disc Crank; Lathe Chuck; Large Cylinders; Engine Cylinders; Globe Valve; Gear Wheels; Templates; Patterns for Bevel Gears; Columns.

CARPENTRY AND JOINERY—Timber; Shake; Knots; Quarter Sawing; Seasoning; Kinds of Wood; Uses; Framed Structures; Joints; Sills; Posts; Studs; Bridging; Flooring; Partitions; Lathing; Trussel Partitions; Roofs; Jack Rafters; Hip and Valley; Mansard; Gables; Construction of Roofs; Shingles; Flashings; Balloon Framing; Siding; Verandas; Arches; Ceiling; Joinery; Joints; Tongue and Groove; Dovetail; Dowel; Mortise and Tenon; Interior Work; Wainscots; Paneling; Door Making; Sliding and Folding Doors; Windows; Sashes; Glass; Splayed Works; Bending Wood; Veneering; Blinds; Hinges; Interior Work.



The Dining Room

Shop Work in Iron.

Following is a full outline of the work given in the shops:

MACHINE SHOP WORK.—Hand Tools; Hammer; Center Punch; Surface Gauge; Scales; Calipers; Micrometer; Vernier Micrometer; Gauges; Chisels; Files and Filing; Drills; Reamers; Taps and Dies; Lathes and Tools; Chucks; Dogs; Mandrels; Centering; Turning Tools; Turning; Tool Posts; Boring Tools; Cutting Speed; Turning a Taper; Taper Attachment; Eccentric Turning; Boring; Boring Bars; Screw Cutting; Toils; Lead Screw; Gears;

Theoretical and Applied.

ENGLISH.—Two years' solid academic work.

FRENCH OR GERMAN.—Two years' solid academic work.

ALGEBRA.—Elementary and Advanced.

GEOMETRY.—Plane, Solid and Spherical.

MECHANICAL DRAWING.—Covering two years' work.

HIGHER MATHEMATICS AND SURVEYING.—Covering one year's work.

MACHINE DESIGN.—Covering one year's work.



The Sketch Club

Compound Lathe; Chasing; Drilling in Lathe; Drilling; Holding Work; Tools; Shaper and Slotter; Laying out Work; Shop Suggestions; Drilling Hard Metals; Lining up Shafting.

TOOL MAKING.—Measuring Instruments; Annealing; Hardening and Grinding Twist Drills; Reamers; Kinds; Cutting Edges; Straightening; Reamer Holders; Expanding Mandrels; Eccentric Arbors; Taps; Flutes; Hardening; Screw Die Hobs; Screw Cutting Dies; Cutting Edges; Clearance; Spring Screw Threading Dies; Die Holders; Counterbores; Facing Tool with Inserted Cutter; Inserted Pilots; Combination Counterbores; Drill Jigs; Stab Jigs; Bushings; Legs; Leaf; Box Jigs; Punch and Die Work; Guide; Gauge Pin; Shear; The Punch; Laying Out; Shear; Locating Pins; Bending Dies; Gauges.

CHEMISTRY.—Covering one year's work in class and laboratory.

PHYSICS.—Covering one year's work in class and laboratory.

Expenses.

The scholastic year consists of thirty-three weeks, divided into three terms, the fall term of twelve weeks, the winter term of twelve weeks, and the spring term of nine weeks. All bills are payable strictly in advance at the beginning of each term.

The list of expenses for board and tuition and for materials used in the shops is fully outlined in the general university catalog. A detailed statement will be furnished on application to

STETSON UNIVERSITY, DE LAND, FLORID



Stetson Hall, the Home of the Younger Boys

JOHN B. STETSON UNIVERSITY

LINCOLN HULLEY, Ph. D., Litt. D., LL. D., President

THE BEST SCHOOL IS NONE TOO GOOD **FOR YOUR CHILDREN**

Send Them to Stetson.

Fall Term Begins Sept. 25

46 Professors and Instructors
17 University Buildings
28 Acres Campus
504 Students Last Year
\$1,000,000.00 Endowment
21,000 Volumes in Library

\$10,000 Pipe Organ
10 Large Laboratories for Science
Unsurpassed General Equipment
College of Liberal Arts
College of Law
College of Technology

College of Business
Preparatory Academy
Normal School
School of Mechanic Arts
School of Music
School of Fine Arts

Separate Dormitories for young men and young women. Careful administration and thorough Supervision. Christian and not sectarian teaching

For catalogs or views, for information, or for room reservation address

JOHN B. STETSON UNIVERSITY, DeLand, Florida



A Group Assembled on the Steps of Chaudoin Hall

