

7-1-1928

John B. Stetson University Bulletin. Vol. XXVIII, No. 1, July, 1928

John B. Stetson University

Find similar works at: <https://stars.library.ucf.edu/cfm-texts>

University of Central Florida Libraries <http://library.ucf.edu>

This Yearbook is brought to you for free and open access by the Central Florida Memory at STARS. It has been accepted for inclusion in Text Materials of Central Florida by an authorized administrator of STARS. For more information, please contact STARS@ucf.edu.

Recommended Citation

John B. Stetson University, "John B. Stetson University Bulletin. Vol. XXVIII, No. 1, July, 1928" (1928). *Text Materials of Central Florida*. 418.

<https://stars.library.ucf.edu/cfm-texts/418>



John B. Stetson University
DeLand, Florida

John B. Stetson University

LOCATION

The University is located at DeLand, Volusia County, Florida. It is about one hundred miles south of Jacksonville and twenty miles from the east coast. It may be reached by the Atlantic Coast Line Railway, the East Coast Railway, the St. Johns River, or the Florida Motor Lines' buses. The site was chosen because it is on high pine land in a rolling country, not close to any water, running or standing, in a section remarkable for its healthfulness.

DELAND

DeLand is a progressive town of about twelve thousand inhabitants. It has a well-organized government, a stirring progressive public spirit, good railway, postal service, pure water, fire protection, excellent markets and stores, strong public schools, two banks and seven white churches. The streets are all paved and paved roads extend in all directions. State highway number two passes through DeLand. Good hotels, notably the "College Arms" and the new "Putnam Inn," comfortable apartments, good boarding houses, and golf courses furnish good homes and pleasant sport.

GENERAL STATEMENT

The University received its charter from the Legislature of the State of Florida in 1887. It now owns a beautiful campus of thirty-three acres situated on high land in the northern part of DeLand, a half mile from the center of town. It is housed in seventeen splendidly equipped buildings which cost about \$400,000.00. It possesses in addition over \$1,000,000.00 in endowment, an endorsed library of 32,000 volumes, also a separate law library of 8,000 volumes. It has ten laboratories for chemistry, physics, biology, bacteriology and general science, and well-equipped iron and wood-working shops. It has an enclosed athletic field, running track, tennis courts, baseball diamond and football field, and nearby facilities for golf, swimming, rowing and other sports.

The University buildings are equipped with all modern conveniences.



ELIZABETH HALL

This is the administration building. In the main building are the offices and several class rooms. The north wing houses the College of Business Administration and the Biological laboratories. The south wing contains the auditorium with its new three-manual pipe organ, and the Conservatory of Music.



THE CARNEGIE LIBRARY BUILDING

This building, one of the most beautiful on the campus, is the gift of Mr. Andrew Carnegie. It is an imposing structure 150 feet long by 50 feet broad, not counting the portico in front nor the stack room in the rear. It contains the C. T. Sampson Library consisting of 32,000 volumes. It was endowed at the time of Mr. Carnegie's gift by a fund of \$40,000, the gift of Elizabeth, Countess of Santa Eulalia.



SCIENCE HALL

This thoroughly modern building was the gift of Mr. Henry M. Flagler. It is 200 feet long by 80 feet broad, and three stories in height. It is made of brick, finished with stucco in the style of the Spanish Renaissance. It contains all the laboratories except the Biological laboratories.



CHAUDOIN HALL

Chaudoin Hall, the dormitory for freshman girls, is in the Dutch colonial style. The first and second stories are built of brick, and the third is in the steeply shingled roof. The first floor contains parlors and the rooms of the Dean of Women. The second and third floors are occupied by the students.



CONRAD HALL

The J. B. Conrad Hall is the dormitory for men. It is situated on the east side of the campus. This building was the gift largely of Mr. J. B. Conrad.



ELIZABETH HALL. (East View)

This is the east view of the Administration Building showing the chapel wing and one of the chapel entrances. The east entrance faces on a park set with shrubbery and palms.



STETSON HALL.

Stetson Hall is the dormitory occupied by the young ladies of the Junior and Senior classes. This building was named for Mr. Stetson and was the gift of Mr. DeLand, Mr. Sampson, and Mr. Stetson together with the citizens of DeLand. The first floor contains parlors and rooms for the teachers. The second and third floors are occupied by the students.



CUMMINGS GYMNASIUM

The Cummings Gymnasium was erected through the liberality of friends of the University and bears the name of Mr. J. Howell Cummings of Philadelphia, who was the largest giver. The second floor contains the basket-ball court and floor for gymnastic drill and games. The first floor contains a Director's room, lockers and showers. The building opens on the Athletic Field.



DE LAND HALL.

This was the first building erected for the institution and together with four acres of land was the gift of Hon. Henry A. DeLand, whose name it bears. It is occupied by the young ladies of the Sophomore class.



SAMPSON LIBRARY

This shows only a portion of the Sampson Library Collection of 32,000 volumes. Mr. C. T. Sampson of Washington, D. C., left a legacy of \$20,000, the interest of which is used for the purchase of books.



A CAMPUS VIEW

This shows the intersection of Woodland Boulevard and Minnesota Avenue, two of the city streets which cross the campus. DeLand is famous for its oak-lined streets.



THE ART MUSEUM

This shows one corner of the Museum of Fine Arts. The collection contains pictures by T. C. Steel, Lucien Biva, Brument, Hiliare, M. D. Williams, DeVieux and Mr. Fluhart, the instructor in Oil Painting. The figures are the work of Mr. Ganiere, the instructor in the Plastic Arts.



A CAMPUS WALK

This shows one of the beautiful walks on the campus. The walks are lined with stately moss-hung oaks. The north wing of Elizabeth Hall which contains the College of Business Administration is shown.



THE AUDITORIUM

The students meet in this auditorium for the daily chapel services. The richly carved screen of the new pipe organ is shown. The console is shown at the left. The students who are studying organ use this organ for practice.



THE STETSON FACULTY IN ACADEMIC ROBES



MOOT COURT ROOM

This is a portion of the Moot Court room showing also a part of the 8,000 volumes of the Law Library. The library has increased in size until it has outgrown the library which adjoins the Moot Court room.



A VIEW OF THE CAMPUS SHOWING SAMPSON HALL

Sampson Hall, which joins Chaudoin Hall, contains the dining room and kitchen, on the first floor, and students' rooms on the second and third floors. This building is also occupied by Freshman young ladies. The campus is shaded by many moss-hung pines such as these.



THE ATHLETIC FIELD

This shows the football team engaged in one of the intercollegiate games. The Cummings Gymnasium is in the background.



THE PRESIDENT'S HOME



PIANO STUDIO

This is the studio of the head of the Conservatory of Music. The Music Faculty is very strong and the students receive the best and most up-to-date instruction in all branches of music.



THE MUNROE HEATH MUSEUM

This cut shows a portion of the museum prepared by the well known "Ward Establishment" of Rochester, N. Y., and presented to the University by the late Mrs. Monroe Heath of Chicago as a memorial to her husband.



THE STUDIO

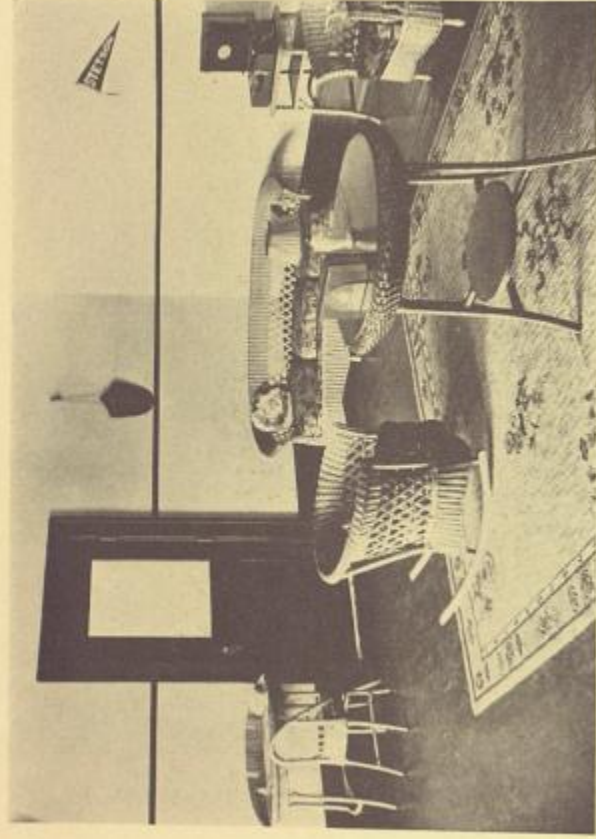
This studio, 39 by 37 feet in size, is lighted by a good north light and a skylight. Here the students receive instruction from competent teachers.



THE ENTRANCE TO SCIENCE HALL



THE MAIN ENTRANCE TO THE AUDITORIUM



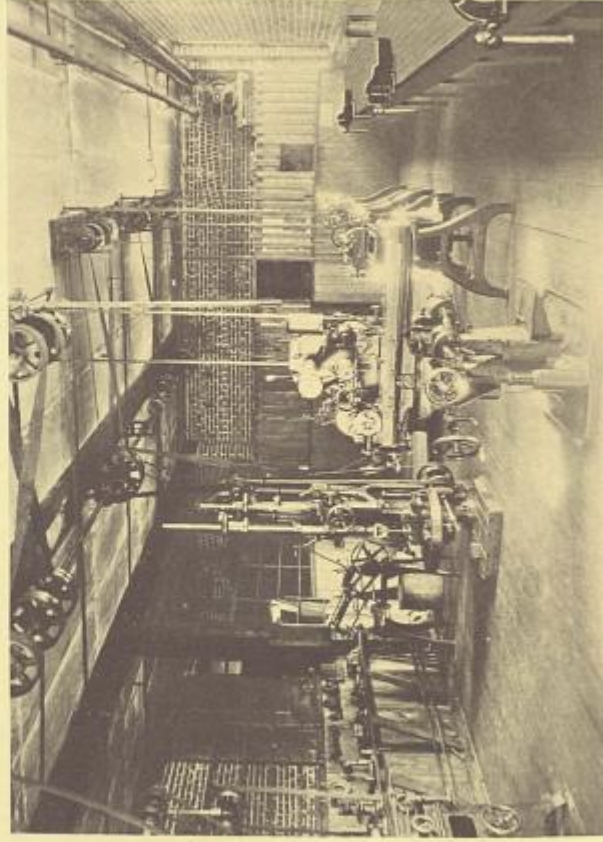
TWO OF THE FRATERNITY ROOMS OF THE YOUNG LADIES



TWO OF THE FRATERNITY ROOMS OF THE YOUNG LADIES



ONE OF THE BIOLOGY LABORATORIES



THE IRON WORKING SHOP



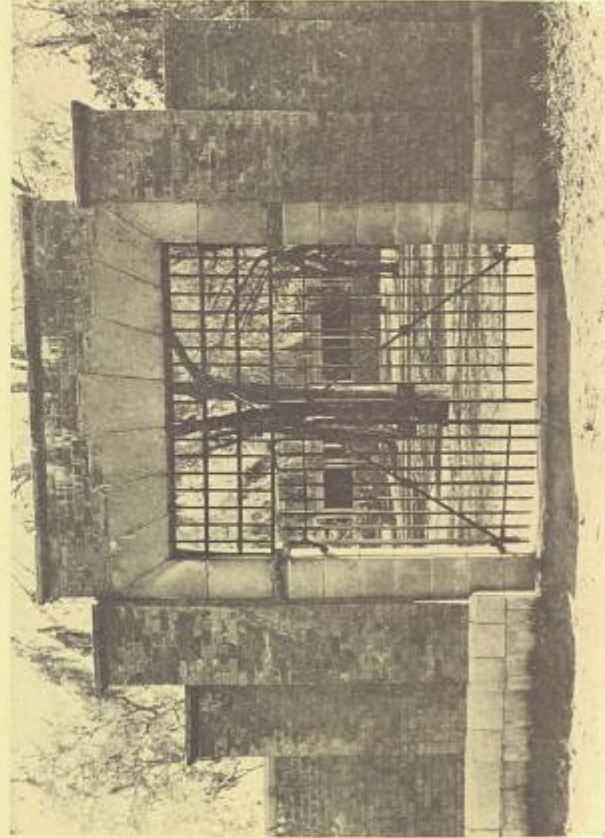
THE PHYSICS LABORATORY



ONE OF THE CHEMISTRY LABORATORIES



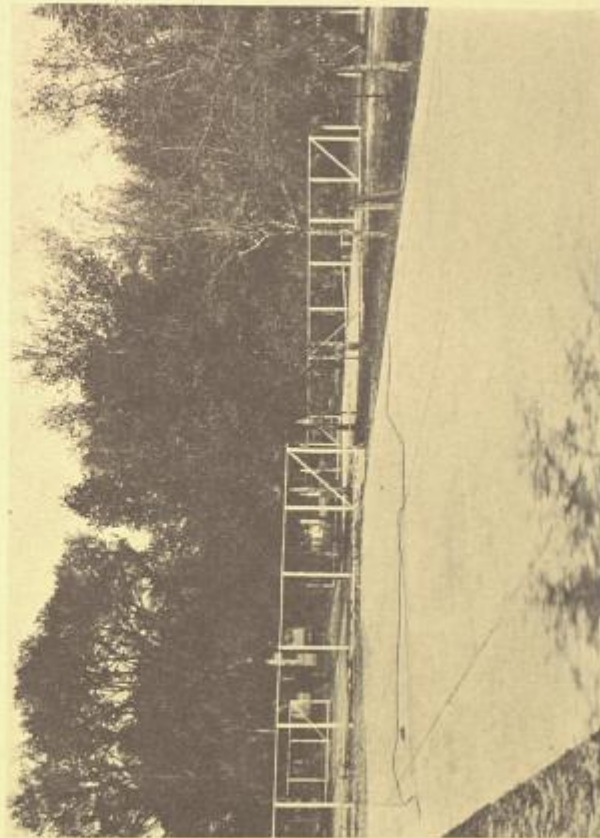
THE MAIN ENTRANCE TO THE ADMINISTRATION BUILDING



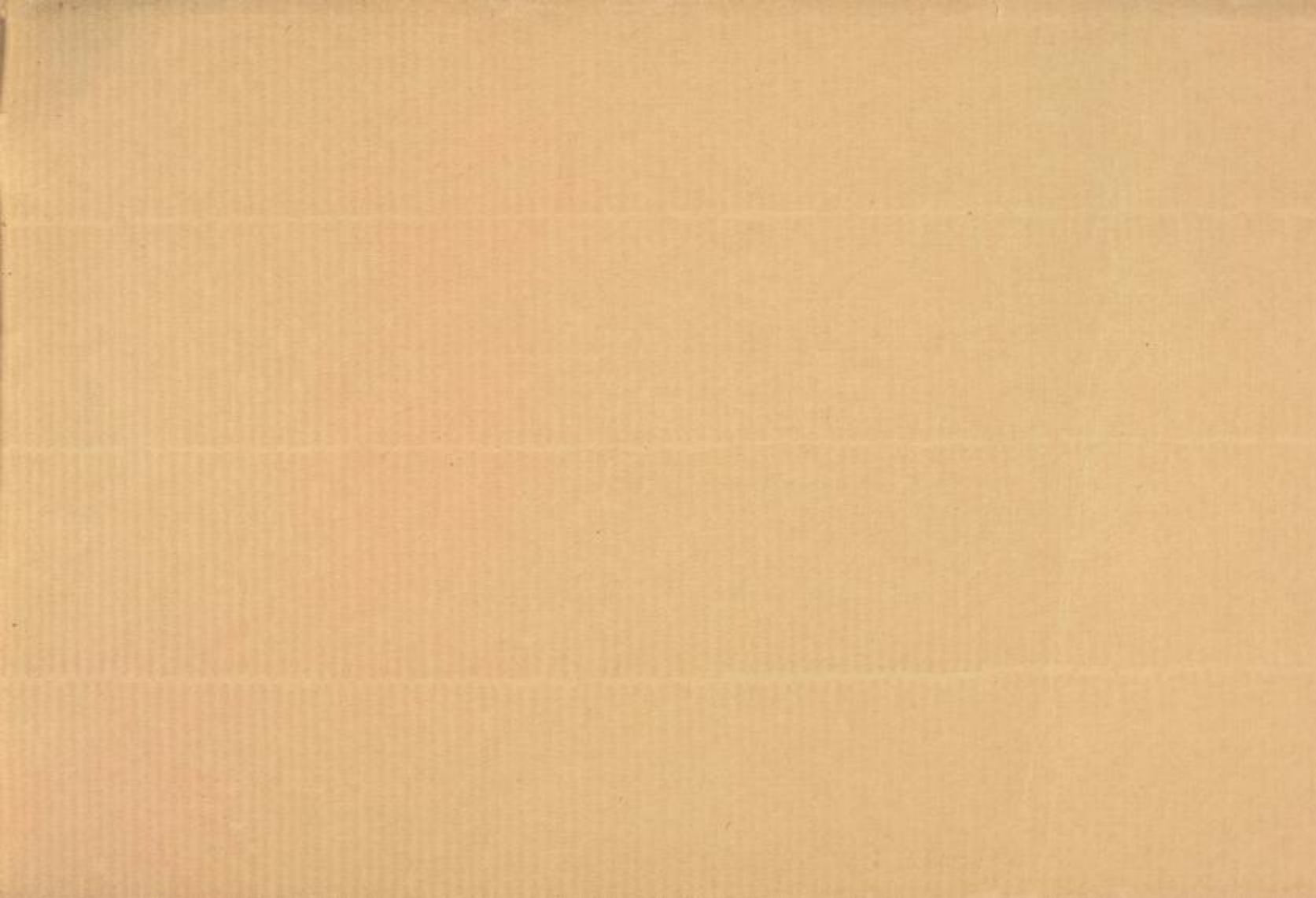
THE ENTRANCE TO THE ATHLETIC FIELD



THE SUNDIAL



ONE OF THE TENNIS COURTS



Published by the John B. Stetson University as frequently as four times a year, in accordance with the provision of the act of Congress of July 16, 1894. Entered as second-class matter at the postoffice at DeLand, Florida.

The E. O. Palater Printing Company
DeLand, Florida.