

STARS

University of Central Florida
STARS

Text Materials of Central Florida

Central Florida Memory

1-1-1886

Seminole

Seminole Hotel (Winter Park, Fla)

Find similar works at: <https://stars.library.ucf.edu/cfm-texts>
University of Central Florida Libraries <http://library.ucf.edu>

This Ephemera is brought to you for free and open access by the Central Florida Memory at STARS. It has been accepted for inclusion in Text Materials of Central Florida by an authorized administrator of STARS. For more information, please contact STARS@ucf.edu.

Recommended Citation

Seminole Hotel (Winter Park, Fla), "Seminole" (1886). *Text Materials of Central Florida*. 880.
<https://stars.library.ucf.edu/cfm-texts/880>



1886





The Seminole.



WINTER PARK. * * * * FLORIDA.

WILL OPEN FOR GUESTS

December 15th, 1886.



GEO. C. WHITNEY, ART PUBLISHER, WORCESTER, MASS.

The Seminole.

WE TAKE pleasure in announcing to our friends and the public, that since last season many improvements have been made in this popular Winter resort. Among them, the addition of forty rooms, now affording ample accommodation for four hundred guests.

The Hotel is delightfully situated upon high land among some of the largest and finest orange groves in the State, surrounded by a chain of beautiful lakes, and is as perfect and complete in every department as money and skill can make it. It has a spacious and elegant Office, ample Parlors, Dining Room 42 x 100 feet, the best of Kitchen appointments, large and airy rooms, single and en suite (many of them with bath rooms and fire places) and a piazza 567 feet in length. It is heated throughout by Steam, has Gas,

Elevator, Electric Bells, Fire Alarm and the most approved fire protection and escapes; hot, cold and steam Baths, and a perfect system of drainage.

THE FURNISHINGS.

It is furnished throughout in the most thorough manner, it being the aim of the proprietors to make "THE SEMINOLE" equal, if not superior to any hotel in Florida.

The table will be supplied with milk, eggs, poultry, vegetables, oranges, guavas, berries and other fruits from farms near by, and meats from N. Y. The water is from a never failing driven well and a careful analysis by eminent and skillful chemists proves it to be as pure as that from the noted Poland Springs in Maine, which have proved so beneficial in kidney trouble.

AMUSEMENTS.

The grounds have been tastefully laid out and covered with shade trees, shrubbery, tropical plants, tennis and croquet plats, which with billiards, bowling, fishing, good saddle and driving horses, steam, sail and row boats on the lakes, and a good orchestra day and evening, afford amusement abundant and varied.

The City of Winter Park.

Where this admirable Hotel is located, is beautifully laid out with fine building lots fronting on broad avenues, pleasant streets and charming lakes. These lots are offered for sale by the Winter Park Company to those who desire a quiet Winter home of their own, and the numerous elegant buildings already erected, testify to the good judgment of the Company in choosing this romantic spot for this purpose. Carefully prepared circulars and maps will be sent upon application to J. S. Capen, Winter Park, Florida, who will also quote prices upon any lots that may be selected from the maps upon application to him, stating the number of the lot and block in which it is located.



*** Educational Advantages. ***

We desire to call especial attention to the facilities afforded by Rollins College, located within five minutes walk of the Hotel, and which under the able management of Rev. E. P. Hooker, D. D., as President, aided by a large corps of competent Northern instructors, renders it possible for the children of those who make this their Winter home to pursue the same line of study that they would follow at their homes in the North, without impairing or interrupting their intellectual development. No expense or personal attention will be spared by the management in the endeavor to contribute in every possible way to the comfort and happiness of the guests.

Telegraph, Post and News Office in the Hotel. For rooms, terms, &c., Address the Managers,

W. E. FORBES,

Box 423, Worcester, Mass.

W. F. PAIGE,

Hotel Kaaterskill, Kaaterskill, N. Y.,

or Grand Hotel, N. Y. City.

****Officers and Directors****

OF THE WINTER PARK COMPANY.

PRES. FRANKLIN FAIRBANKS, St. Johnsbury, Vt.

VICE PRES. J. F. WELBORNE, Winter Park, Florida.

TREAS. WM. C. COMSTOCK, Chicago, Ill.

AUDITOR, A. W. ROLLINS, Chicago, Ill.

F. B. KNOWLES, Worcester, Mass.

C. H. HUTCHINS, Worcester, Mass.

PELEG PECKHAM, St. Louis, Mo.

SEC. J. S. CAPEN, Winter Park, Florida.

Routes to Winter Park.

Fast Mail, Pullman Buffet Cars, New York to Winter Park,
42 hours.

By Atlantic Coast Line, all rail, through Philadelphia, Baltimore,
Washington, Richmond, Charleston and Jacksonville.

By East Tennessee, Virginia and Georgia, all rail, through the
Shenandoah Valley, Chattanooga, Atlanta and Macon.

By New York and Charleston Steamship Line, direct to
Jacksonville.

By Ocean Steamship Line to Savannah.

By Mallory Line to Fernandena.

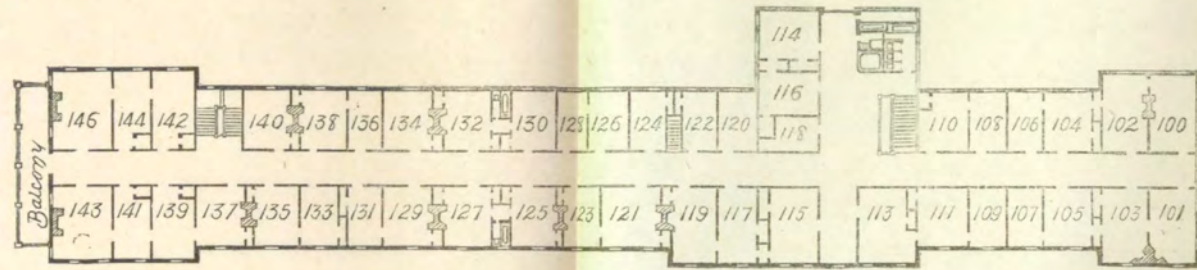
From Boston by Boston and Savannah Steamship Line.

From Chicago via Louisville, Nashville and Cincinnati Southern.

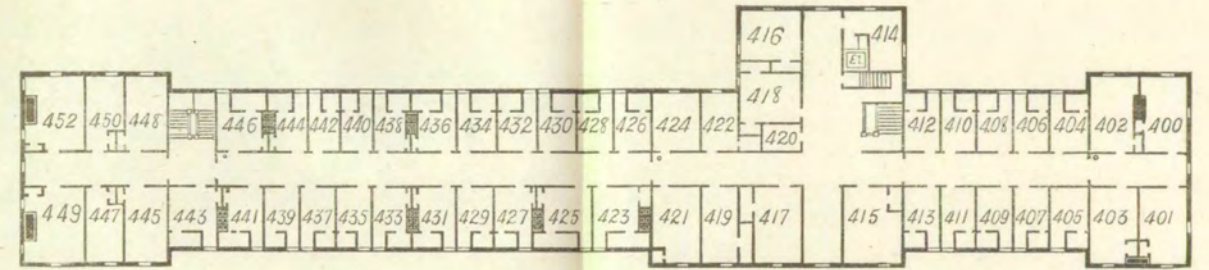
From Jacksonville, the J. T. and K. W. are now running two
fast trains daily, arriving at W. P. at 2 and 7 P. M.

From Jacksonville by the F. R. and N. Co., via Leesburg.

From Jacksonville by the Fine Steamers of the DeBarry and
Peoples Line up the beautiful St. Johns River, connecting at San-
ford with trains for Winter Park by the South Florida R. R., the
main thoroughfare of travel to and from Key West and Havana.

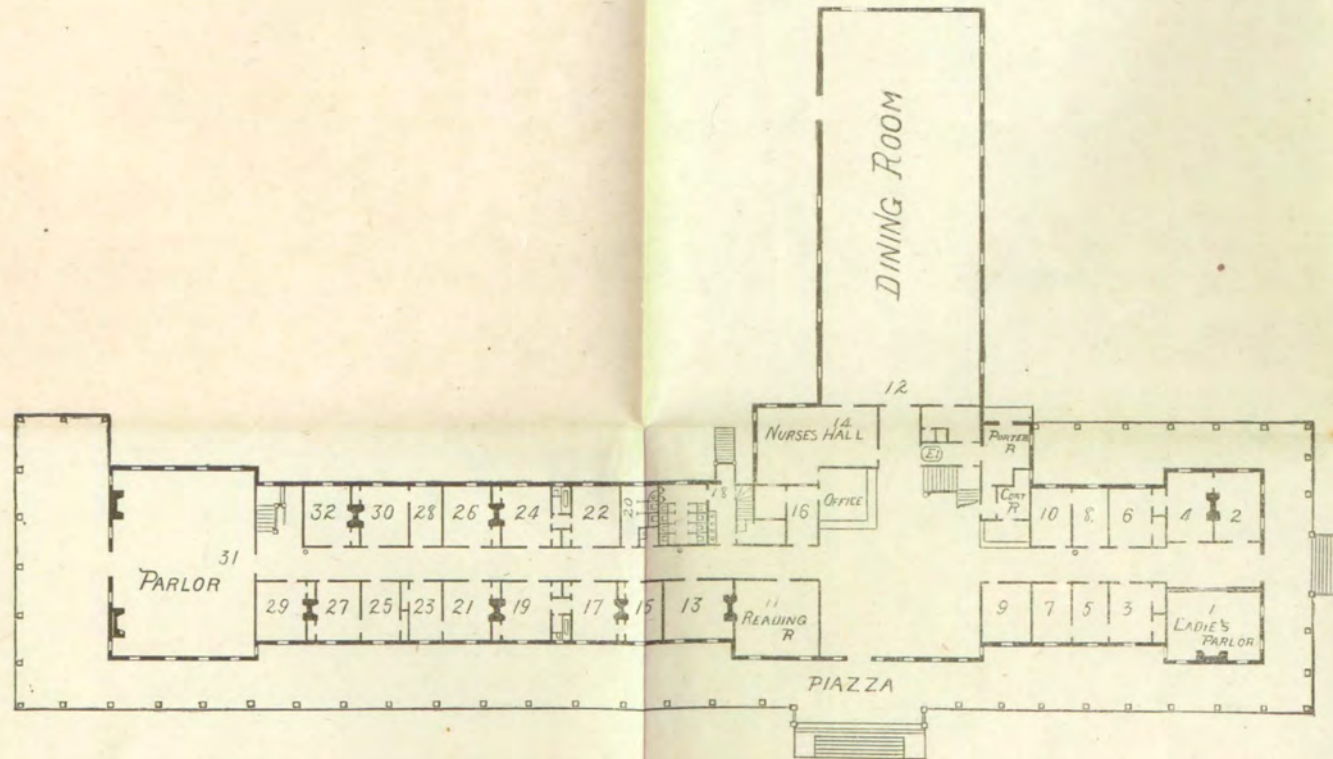


FIRST FLOOR.

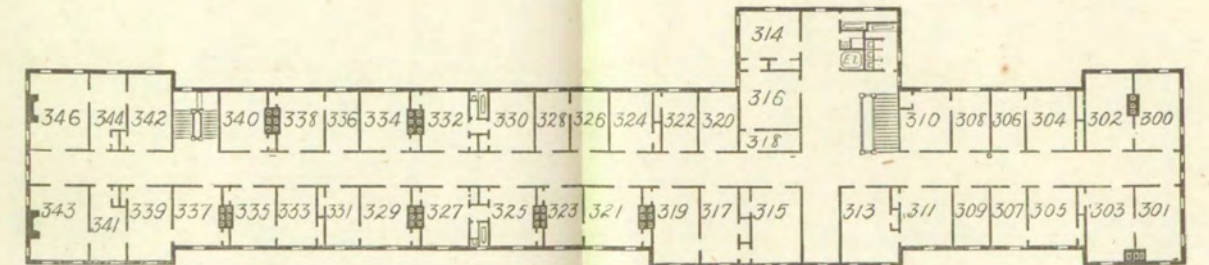


FOURTH FLOOR.

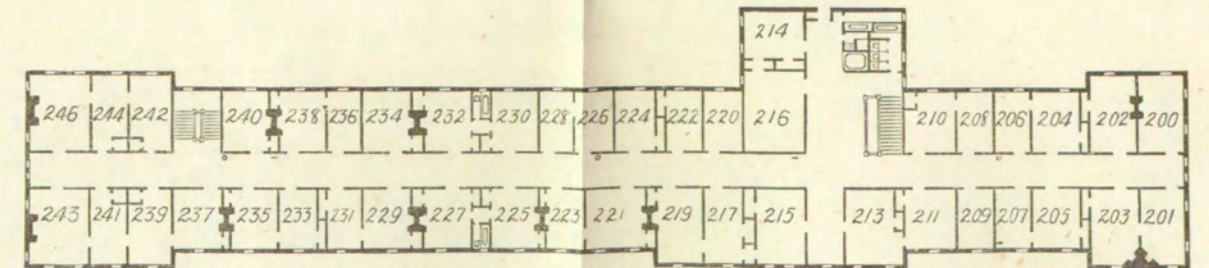
ARCHIVES of ROTHS COLLEGE



OFFICE FLOOR.

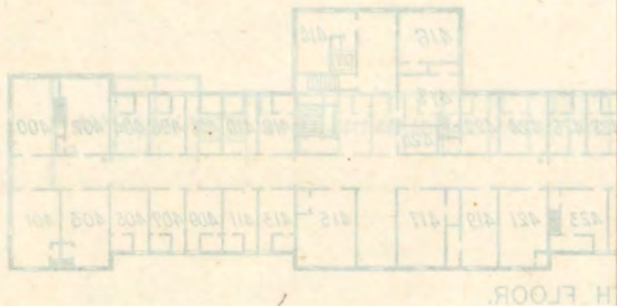


THIRD FLOOR.



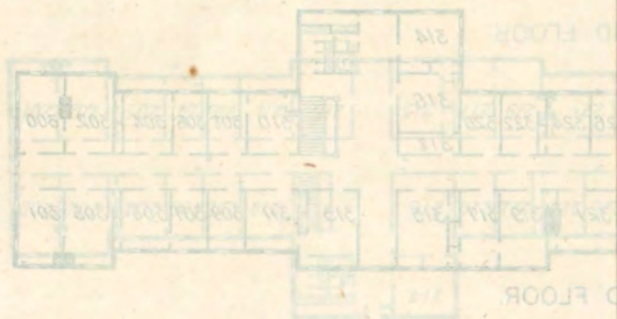
SECOND FLOOR.

THE SEMINOLE



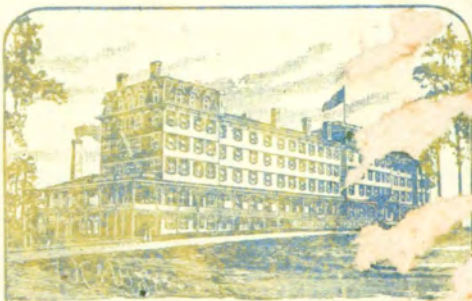
4TH FLOOR

ARCHIVES of ROLLINS COLLEGE



3RD FLOOR

ARCHIVES of ROLLINS COLLEGE



» THE SEMINOLE «