

10-14-2022


## Conscious Editing and Metadata Enhancement for Library Collections

Sai Deng

*University of Central Florida, [sai.deng@ucf.edu](mailto:sai.deng@ucf.edu)*

Jeanne Piascik

*University of Central Florida, [jeanne.piascik@ucf.edu](mailto:jeanne.piascik@ucf.edu)*

 Part of the [Archival Science Commons](#), [Cataloging and Metadata Commons](#), [Linguistics Commons](#), and the [Social Justice Commons](#)

Find similar works at: <https://stars.library.ucf.edu/ucfscholar>

University of Central Florida Libraries <http://library.ucf.edu>

This Conference Presentation is brought to you for free and open access by STARS. It has been accepted for inclusion in Faculty Scholarship and Creative Works by an authorized administrator of STARS. For more information, please contact [STARS@ucf.edu](mailto:STARS@ucf.edu).

---

### Original Citation

Deng, S. & Piascik, J. (2022). Conscious editing and metadata enhancement for library collections. ALA Core Forum, October 14, 2022, Salt Lake City, UT.



# Conscious Editing and Metadata Enhancement for Library Collections

Sai Deng & Jeanne Piascik

University of Central Florida Libraries

 #coreforum2022

## “WINDOWS, MIRRORS AND SLIDING GLASS DOORS” THEORY & INCLUSIVE METADATA

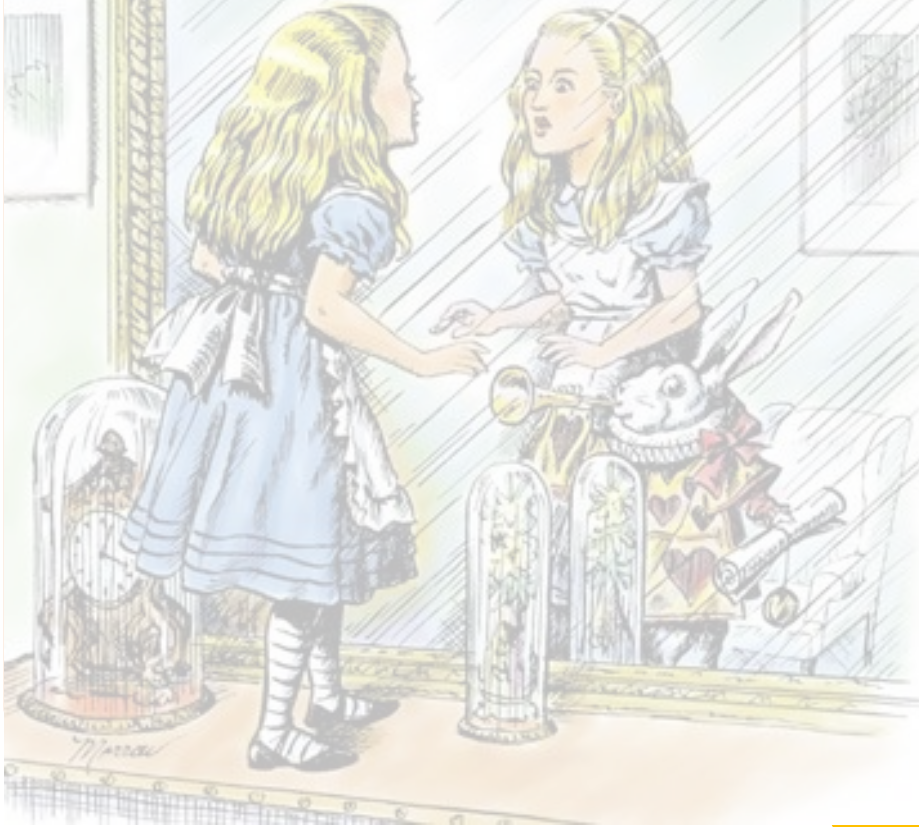


Image Source: <https://www.pinterest.com/pin/382665299563414956>

- **Library Activism**

- **Biases in Cataloging & Classification:** DDC, LCSH; *Prejudices and Antipathies: A Tract on the LC Subject Heads Concerning People* (Berman, 1971, 2013)
- **“Windows, Mirrors and Sliding Glass Doors” Theory** (Bishop, 1990)
- **DEI (Diversity, Equity & Inclusion) and Historically Marginalized communities**

- **Towards Inclusive Metadata: DEI Considerations**

- **Racial Considerations:** Include racial identities for all people (Dean, 2019)
- **Ethical and Cultural Considerations:** Be more precise, less prejudicial (Biswas & Hallyburton, 2020)
- **Applying Cultural Competencies in Archival Description:** Add context, recognize biases and historical racism (Tang et al., 2018); acknowledge humanity (Bolding, 2018)
- **Gender Considerations:** Respect (gender) identity; record information about gender as the person self-identifies and explicitly discloses, taking information from readily and publicly available sources... (Billey et al., 2016)
- **Other Considerations:** Describing disability, multilingual metadata & access...
- **Inclusive Metadata & Conscious Editing Resources List** (SSDN Metadata Working Group, 2020)
- **Cases & Approaches for Reparative Editing:** Statement acknowledging bias, use less neutral phrasing, provide context for description, use precise names... (SSDN, 2022)

# DEI Audit of Collections

- **DEI Audit and Metadata Enhancement**

- **Digital Collections**

- African American Legacy: The Carol Mundy Collection, 1794-2010
    - Civil War Collection
    - PRISM: Political & Rights Issues & Social Movements

- **Team:** Sai Deng, Jeanne Piascik & Faye Mazzia (Cataloging), Kerri Bottorff & Lee Dotson (Digital Initiatives), David Benjamin (Special Collections & University Archives)

- **Analyzing and Enhancing Juvenile Biography Subject Headings for EDI at the UCF Curriculum Materials Center (CMC), 2021-2022**

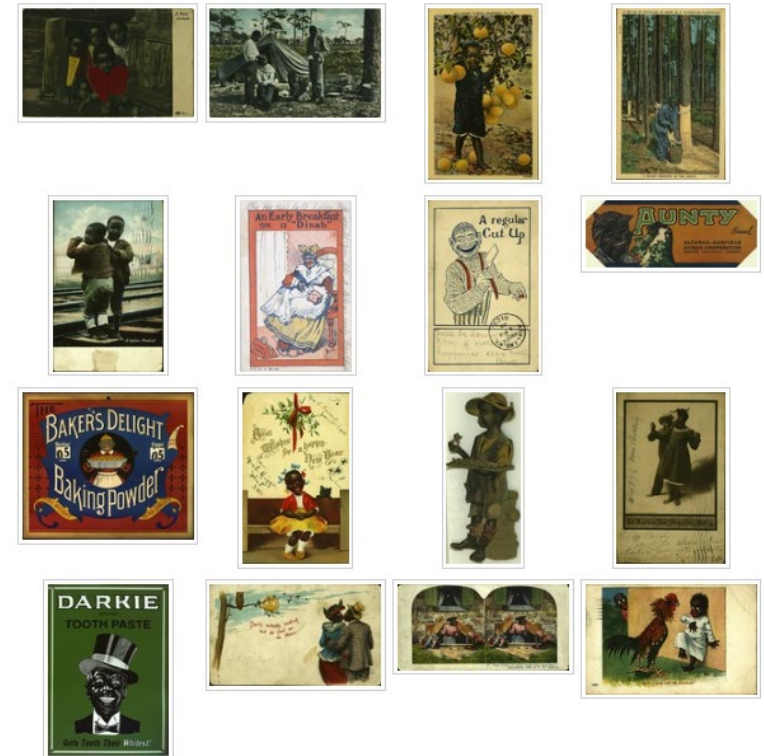
- **Juvenile Biography Collection Audit:** 952 books, subject heading analysis for bias, enhance headings based on EDI/DEI principles
  - **Team:** Peter Spyers-Duran, Sai Deng & Jeanne Piascik (Cataloging), Amy Dovydaitis (CMC), Kristine Shrauger (ILL), Diamond Williams (Student)

## AFRICAN AMERICAN LEGACY: THE CAROL MUNDY COLLECTION – IMAGES

The African American Legacy: The Carol Mundy Collection, 1794-2010 contains materials, graphics and artifacts that may be offensive and disturbing. Librarians and archivists strive to preserve this history in a sensitive manner, providing historical context and updating biased terms in metadata description. The University of Central Florida Libraries recognizes the description of digital and archival materials is an iterative and imperfect process and will continue to consult the misrepresented and underrepresented communities for updated language.

Follow

[Switch View to List](#) [View Slideshow](#)





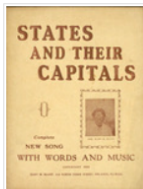
# DEI Statement

## AFRICAN AMERICAN LEGACY: THE CAROL MUNDY COLLECTION – TEXT

The African American Legacy: The Carol Mundy Collection, 1794-2010 contains materials, graphics and artifacts that may be offensive and disturbing. Librarians and archivists strive to preserve this history in a sensitive manner, providing historical context and updating biased terms in metadata description. The University of Central Florida Libraries recognizes the description of digital and archival materials is an iterative and imperfect process and will continue to consult the misrepresented and underrepresented communities for updated language.

Follow

[Switch View to Grid](#) [View Slideshow](#)



### States and their capitals: Complete new song with words and music.

*Blunt, Mary M.*

4-page sheet music for the song "States and Their Capitals". Words and music by Mary M. Blunt. The cover includes Mrs. Blunt's photo and her then address. The song was copyrighted in 1944.



### Club Plantation Souvenir Menu.

*Club Plantation*

Derogatory caricature of a black woman pouring champagne into a large glass with a heart-shaped lock holding the legs of her petti-pants together. Words "No? No? A 1000 TIMES NO!!!" written on the backside of her pants. 4-page Souvenir menu for Club Plantation in St. Louis, Mo. White-only night club that featured all black performers.

## AFRICAN AMERICAN LEGACY: THE CAROL MUNDY COLLECTION – TEXT

### Club Plantation Souvenir Menu.

[Club Plantation](#)

Download Full Text (1.7 MB)

[Download](#)



#### Description

Derogatory caricature of a black woman pouring champagne into a large glass with a heart-shaped lock holding the legs of her petti-pants together. Words "No? No? A 1000 TIMES NO!!!" written on the backside of her pants. 4-page Souvenir menu for Club Plantation in St. Louis, Mo. White-only night club that featured all black performers.

#### Disclaimer

The African American Legacy: The Carol Mundy Collection, 1794-2010 contains materials, graphics and artifacts that may be offensive and disturbing. Librarians and archivists strive to preserve this history in a sensitive manner, providing historical context and updating biased terms in metadata description. The University of Central Florida Libraries recognizes the description of digital and archival materials is an iterative and imperfect process and will continue to consult the misrepresented and underrepresented communities for updated language.

#### Subject

Menus; Caricature; Advertisements; Plantation; Advertising; Racism in cartoons; Black people; African Americans in art; African Americans -- Collectibles; St. Louis(Mo.); 1940s; Black women; Champagne; Racial bias; Black Americana

#### Publication Date

1940

14 DOWNLOADS

Since January 08, 2021

[PLUMX METRICS](#)

[INCLUDED IN](#)

[Archival Science Commons.](#)

[United States History Commons](#)

SHARE



# STARS

University of Central Florida  
STARS

African American Legacy: The Carol Mundy Collection – Text

African American Legacy: The Carol Mundy Collection, 1794-2010

1940

### Club Plantation Souvenir Menu.

Club Plantation

[Part of the Archival Science Commons, and the United States History Commons](#)

#### Disclaimer

The African American Legacy: The Carol Mundy Collection, 1794-2010 contains materials, graphics and artifacts that may be offensive and disturbing. Librarians and archivists strive to preserve this history in a sensitive manner, providing historical context and updating biased terms in metadata description. The University of Central Florida Libraries recognizes the description of digital and archival materials is an iterative and imperfect process and will continue to consult the misrepresented and underrepresented communities for updated language.

Find similar works at: <https://stars.library.ucf.edu/carolmundy-text>

University of Central Florida Libraries <http://library.ucf.edu>

This None is brought to you for free and open access by the African American Legacy: The Carol Mundy Collection, 1794-2010 at STARS. It has been accepted for inclusion in African American Legacy: The Carol Mundy Collection – Text by an authorized administrator of STARS. For more information, please contact [STARS@ucf.edu](mailto:STARS@ucf.edu).

#### Recommended Citation

Club Plantation, "Club Plantation Souvenir Menu." (1940). *African American Legacy: The Carol Mundy Collection – Text*. 2. <https://stars.library.ucf.edu/carolmundy-text/2>



DEI statement as shown in the Carol Mundy Collection site.

DEI statement shown as “Disclaimer” field in the metadata of an individual record.

DEI statement shown as a disclaimer in the record cover page generated by Digital Commons.

# Conscious Editing: Language - Vocabularies

---

- **Vocabularies update, e.g.,**

• Old vocabulary	Updated vocabulary
Blacks	Black people
Slave(s)	Enslaved people, Enslaved person
African American slaves	Enslaved African American people
Former slave	Former enslaved person
Freed slave	Freed black people

- **Example: Drummer Jackson**

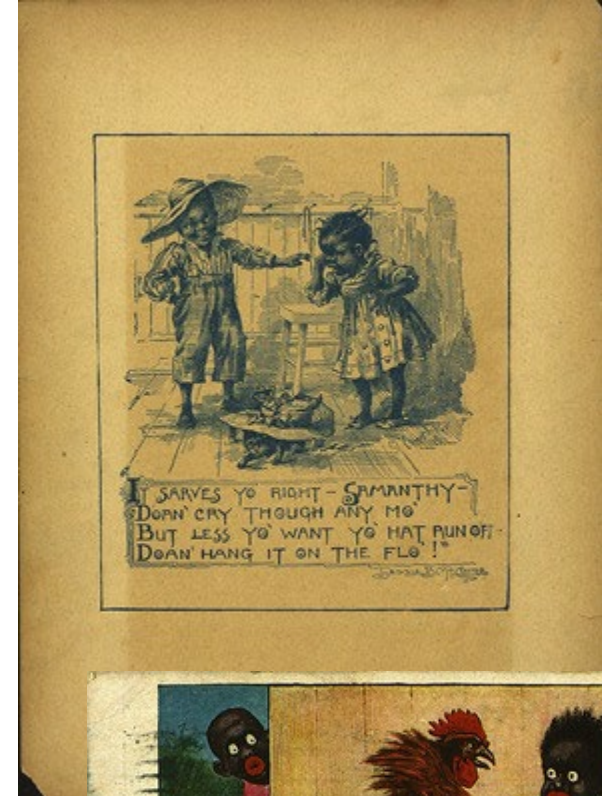
- **Enhanced description:** Postcard consisting of 2 pages (front & back). Front: Black and white photograph, the Drummer boy Jackson, **a former enslaved person** and then drummer for the Union Army in the 79th U.S. Colored Troops in Louisiana. Back has text: 'Drummer Jackson' 79th United States Colored Troops. This image was one of many propaganda acts used to encourage Negro enlistments." **The term "Negro" appeared on the postcard is outdated and its contemporary preferred term is "Black people".**
- **Original description:** Postcard consisting of 2 pages (front & back). Front: Black and white photograph, the Drummer boy Jackson, **former slave** and then drummer for the Union Army in the 79th U.S. Colored Troops in Louisiana. Back has text: 'Drummer Jackson' 79th United States Colored Troops. This image was one of many propaganda acts used to encourage **Negro enlistments.**"



# Conscious Editing: Language - Black Dialect

- Little Players - Part I: The Nursery

- **Enhanced description:** Black and White print (page from book) with pieces of tape along its edges. "The Nursery" poem by Margaret Johnson about how a nursery is a place and yet it is so much more. Page 2 is a lithographic print of a drawing done by Jessie B. McClure of two children playing/talking and a cat running away with a hat captioned "It serves yo right - Samantha - Doan' cry though any mo' but less yo' want yo' hat run off doan' hang it on the flo'!" **Stereotyped black dialect was used in depicting black people at that time.**
- **Original description:** Black and White print (page from book) with pieces of tape along its edges. "The Nursery" poem by Margaret Johnson about how a nursery is a place and yet it is so much more. Page 2 is a lithographic print of a drawing done by Jessie B. McClure of two children playing/talking and a cat running away with a hat captioned "It serves yo right - Samantha - Doan' cry though any mo' but less yo' want yo' hat run off doan' hang it on the flo'!"



- "Deed, I dun eat no chicken"

- **Enhanced description:** Postcard featuring a black boy staring at another one who is pinned against a wall by a very large rooster. **Caricature.** Its front has text "Deed, I dun eat no chicken". **Stereotyped black dialect was used in depicting black people at that time.** Its back is stamped with "CINCINNATI.O. MAR 11 530PM 1909".
- **Original description:** Postcard featuring a black boy staring at another one whom is pinned against a wall by a very large rooster. Its front has text "**Deed, I dun eat no chicken**". Its back is stamped with "CINCINNATI.O. MAR 11 530PM 1909".

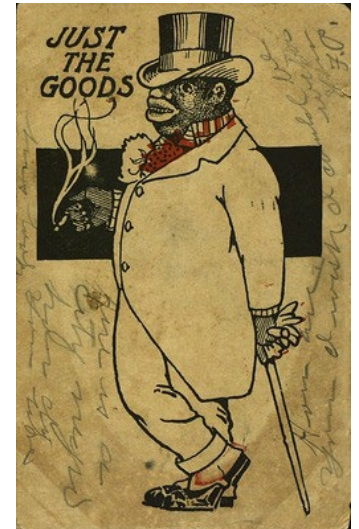




# Conscious Editing: Language - Racial Slurs, Mockery

- "I got my eye on you", I & "I got my eye on you", II

- **Enhanced description:** Printed color Black Americana postcards. Caricature. Front of the first card: Black male staring at a Turkey with one eye. Entitled "I got my eye on you". Stamped "ATLANTA, GA. OCT 25 2 30 OM 1906" in the back. Front of the second card: a black man in a suit. Entitled "Just the goods". Stamped "ATLANTA, GA. MAR 10 1907". **Stereotypes of African Americans were represented through racial jokes and slurs at that time.** Both are addressed to "Mr. Richard Sparkman".
- **Original description:** Printed color Black Americana postcards. Caricature. Front of the first card: **Black male staring at a Turkey with one eye. Entitled "I got my eye on you".** Stamped "ATLANTA, GA. OCT 25 2 30 OM 1906" in the back. Front of the second card: **a black man in a suit. Entitled "Just the goods".** Stamped "ATLANTA, GA. MAR 10 1907". Both are addressed to "Mr. Richard Sparkman".



- Romeo and Juliet in Dixieland

- **Enhanced description:** Vintage color postcard featuring two black male & female workers picking cotton in a field. **Captioned "D-17 Romeo and Juliet in Dixieland" which in a sense implies ridicule and mockery.**
- Vintage color postcard featuring two black male & female workers picking cotton in a field. **Captioned "D-17 Romeo and Juliet in Dixieland".**

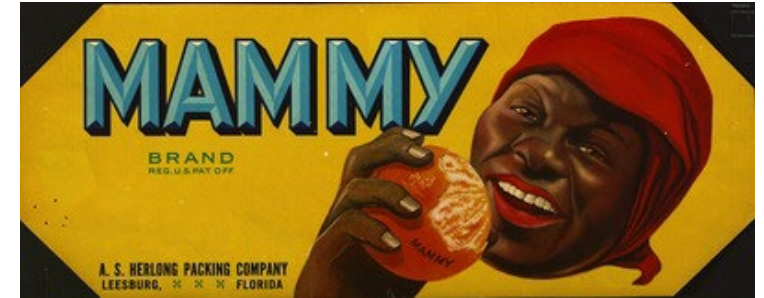




# Conscious Editing: Images & Stereotypes - Mammy, "Old Black Joe"...

- Mammy

- **Enhanced description:** Crate Label: Mammy Brand A.S. Herlong Packing Company. Leesburg, Fla. Color print depiction of an older black woman eating an orange with the word "MAMMY" on it. The mammy caricature was often used by companies to sell products at that time.
- **Original description:** Crate Label: Mammy Brand A.S. Herlong Packing Company. Leesburg, Fla. Color print depiction of an older black woman eating an orange with the word "MAMMY" on it.



- Old Black Joe Speckled Butter Beans

- **Enhanced description:** "Old Black Joe" speckled butter beans can label. Pictured: plate of speckled butter beans, "Old Black Joe" and a log cabin. Stereotyped images of black people were used by companies for advertisement at that time.
- **Original description:** "Old Black Joe" speckled butter beans can label. Pictured: plate of speckled butter beans, "old black joe" and a log cabin.



- Living Easy

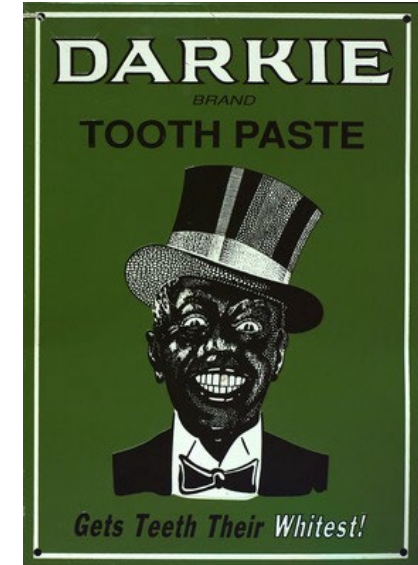
- **Enhanced description:** Vintage photographic Black Americana Postcard. Front: Four black children sitting in front of a log cabin. In color. With text "6074 Living Easy". The card is postally unused. Stereotyped images of black people were featured in postcards, prints and many other items at that time.
- **Original description:** Vintage photographic Black Americana Postcard. Front: Four black children sitting in front of a log cabin. In color. With text "6074 Living Easy". The card is postally unused.



# Conscious Editing: Images & Stereotypes - Caricature

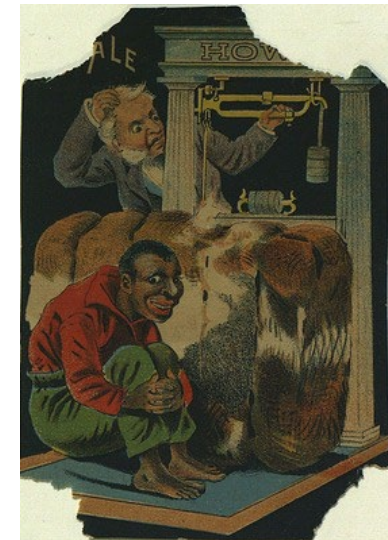
- **Darkie Brand Tooth Paste: "Gets teeth their whitest!"**

- **Enhanced description:** Metal sign of Darkie Toothpaste, black and white **caricature** image of a black male in top hat, shirt & bowtie, with green background. "Darkie" is a toothpaste brand of Hawley & Hazel Chemical Company **in which African Americans were represented with exaggeration and ridicule**. Established in Shanghai in 1933 and later based in Hong Kong and Taiwan, Hawley & Hazel was acquired in 1985 by the US corporation Colgate-Palmolive. The date of this sign is unknown.
- **Original description:** Metal sign of Darkie Toothpaste, black and white image of a black male in top hat, shirt & bowtie, with green background. "Darkie" is a toothpaste brand of Hawley & Hazel Chemical Company. Established in Shanghai in 1933 and later based in Hong Kong and Taiwan, Hawley & Hazel was acquired in 1985 by the US corporation Colgate-Palmolive. The date of this sign is unknown.



- **Howe Scales Co. Tradecard**

- **Enhanced description:** Color, trade card, **with caricature image of** a black male sitting behind bale of cotton, white male weighing cotton. Back of card says "Howe Scales made by the Howe Scale Co." and "Unequaled for Workmanship, Finish, Durability and Sensitiveness. Used exclusively where accuracy and durability are required." **Caricatures and racist propaganda were used to sell product at that time**. The corners are torn.
- **Original description:** Color, trade card, black male sitting behind bale of cotton, white male weighing cotton. Back of card says "Howe Scales made by the Howe Scale Co." and "Unequaled for Workmanship, Finish, Durability and Sensitiveness. Used exclusively where accuracy and durability are required." The corners are torn.



# Conscious Editing: Context

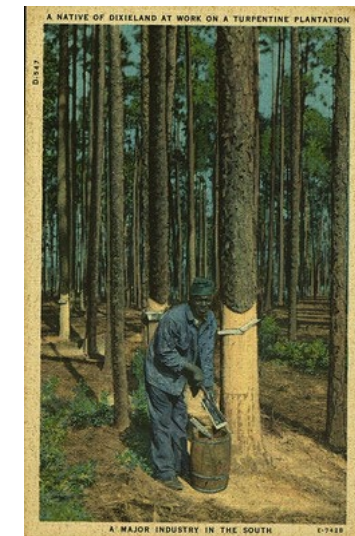
- Valentine's Day Card

- **Enhanced description:** Valentine's day themed card with moveable parts. The watermelon slides back and forth, making the eyes move. Written on front: "This watermelon's mighty sweet -- But not half as sweet as you!" Written on back: "To Richard" "From Bob Matchett" "\$8.00" A smaller, indistinguishable signature under the "\$8.00" Back writing is in pencil. *Stereotyped images of black people were featured in postcards and many other items at that time.*
- **Original description:** Valentine's day themed card with moveable parts. The watermelon slides back and forth, making the eyes move. Written on front: "This watermelon's mighty sweet -- But not half as sweet as you!" Written on back: "To Richard" "From Bob Matchett" "\$8.00" A smaller, indistinguishable signature under the "\$8.00" Back writing is in pencil.



- A Native of Dixieland at Work on A Turpentine Plantation

- **Enhanced description:** Black Americana postcard entitled "A native of Dixieland at work on a turpentine plantation, a major industry in the south". It is numbered "D-547" and "E-742B" in the front. Back has printed text "Published by the Asheville Post Card Co., Asheville, N. C.". The card is postally unused. *Stereotyped images of black people were featured in advertisements, prints and many other items at that time.*
- **Original description:** Black Americana postcard entitled "A native of Dixieland at work on a turpentine plantation, a major industry in the south". It is numbered "D-547" and "E-742B" in the front. Back has printed text "Published by the Asheville Post Card Co., Asheville, N. C.". The card is postally unused.



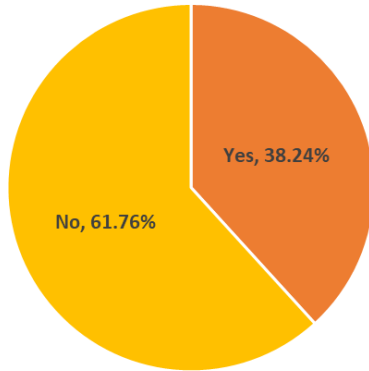


# Analyzing and Enhancing Juvenile Biography Subjects for DEI

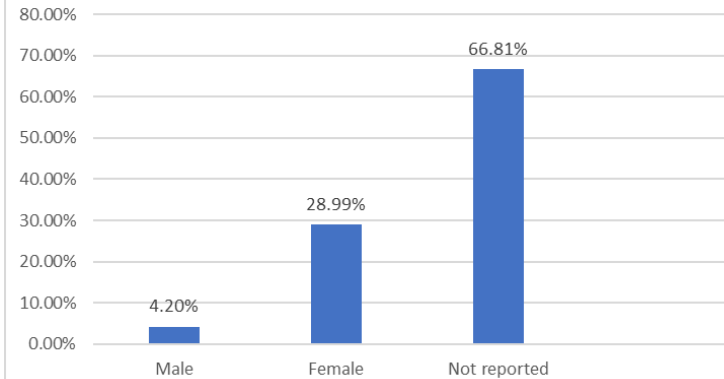
- **Analyzing and Enhancing Juvenile Biography Subject Headings for DEI at the UCF Curriculum Materials Center (CMC), 2021-2022**
  - **Juvenile Biography Collection Audit:** 952 books, subject heading analysis for bias, enhance headings based on EDI/DEI principles
- **Methodology**
  - Collection audit survey designed by librarians using Qualtrics, 39 Survey Questions
  - Student worker answered survey questions and inputted data
  - Survey data exported and compiled in Excel for statistical analysis, textual analysis & subject heading enhancement by librarians
  - Subject headings (local subjects/ LCSH/ LCDGT/ Homosaurus with gender, race/ ethnicity or nationality info) added to records in Alma with MarcEdit and Alma Import Profile

# Survey Results: Statistical Analyses

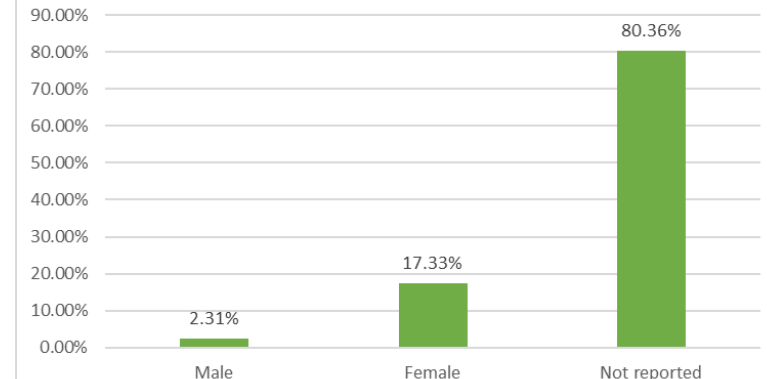
Is this book about a white male?



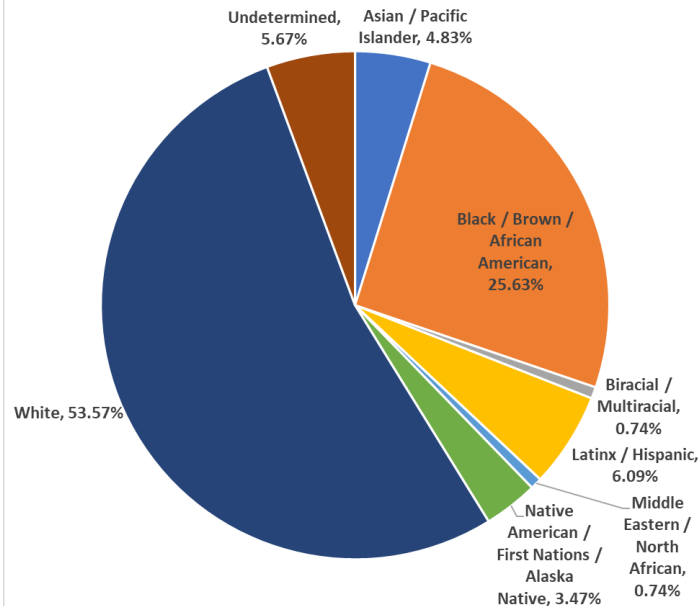
What gender is reflected in the LCSH?



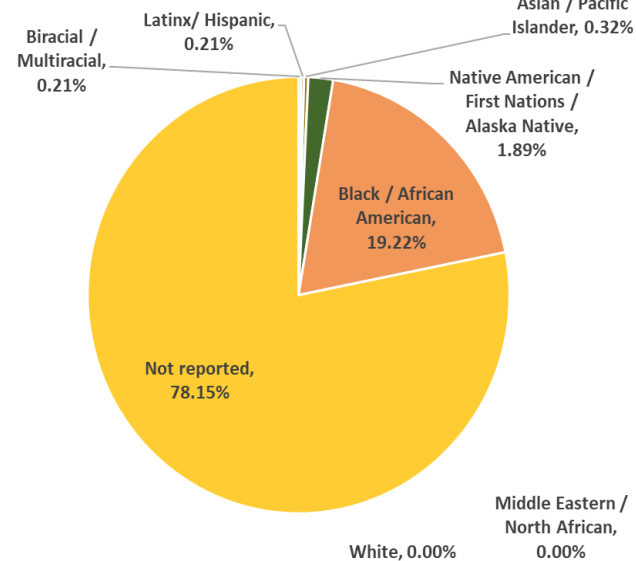
What gender is being reported in the non-LCSH?



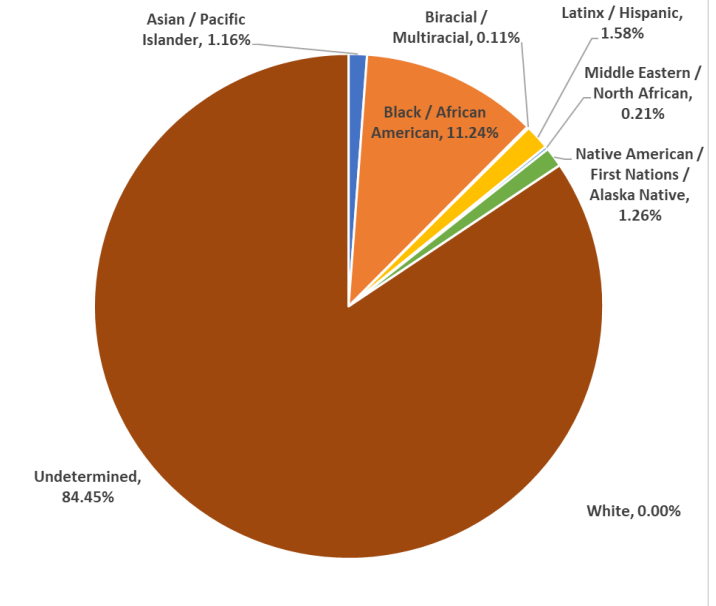
Race Determined: A Breakdown by Race and Ethnicity



LCSH Speak to Race/Ethnicity

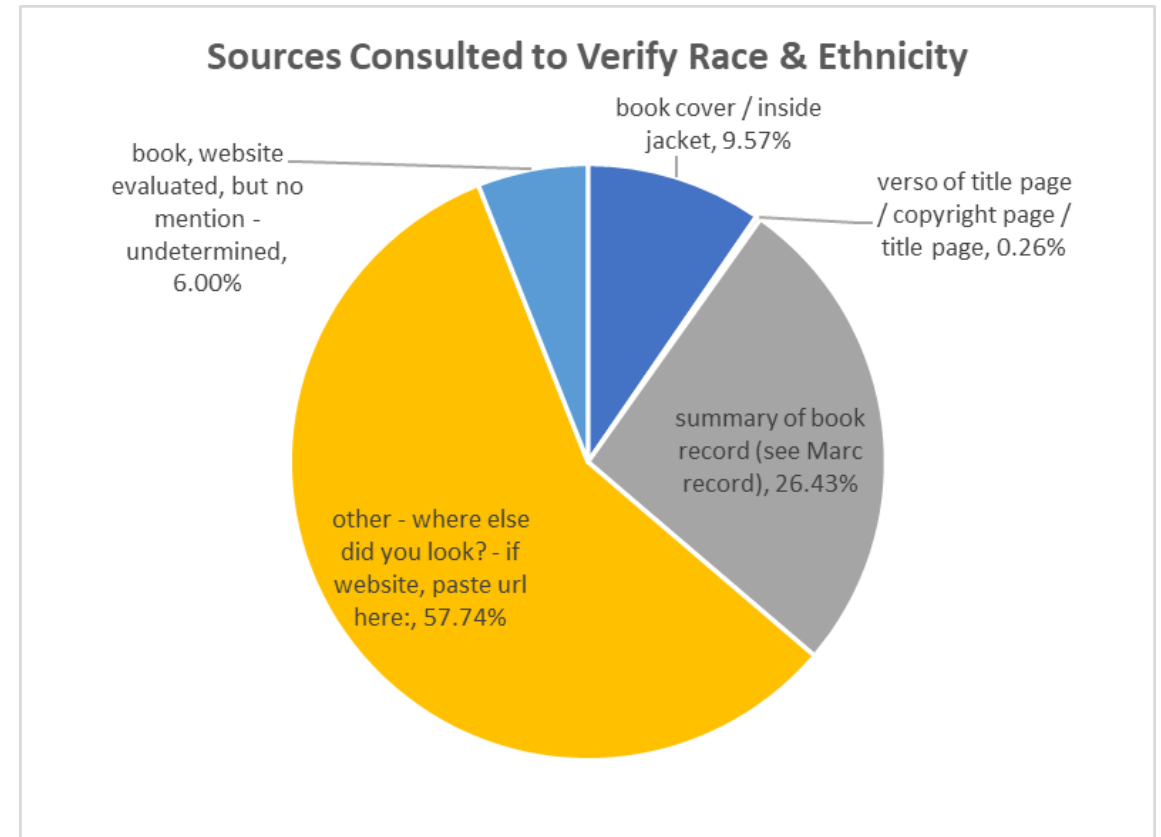


Non-LCSH Speak to Race/Ethnicity



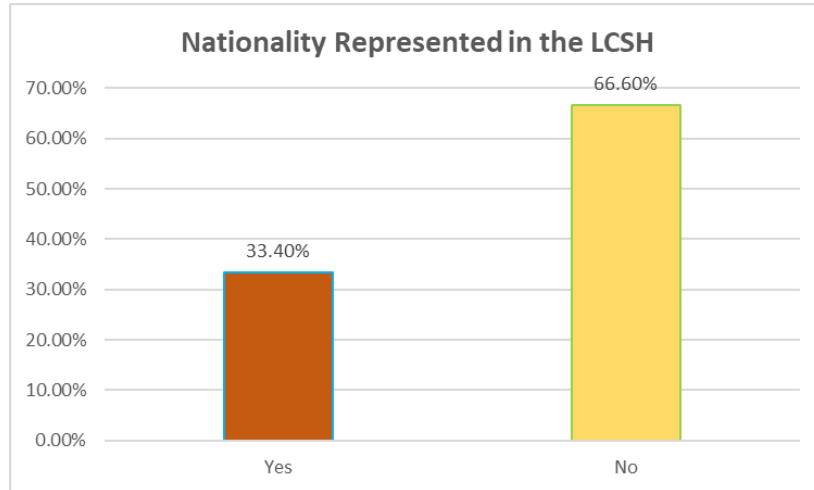
# Survey Results: Statistical Analyses

LCSH Speak to Race/Ethnicity			
Years	# of bib records	Mean # LCSH per bib record	Mean # non-LCSH per bib record
2020-2021	94	18.94	8.56
2010-2019	526	7.68	9.2
2000-2009	214	6.88	1.75
1990-1999	94	7.78	1.38
1980-1989	12	7.58	2.33
pre-1980	12	4.5	1.17

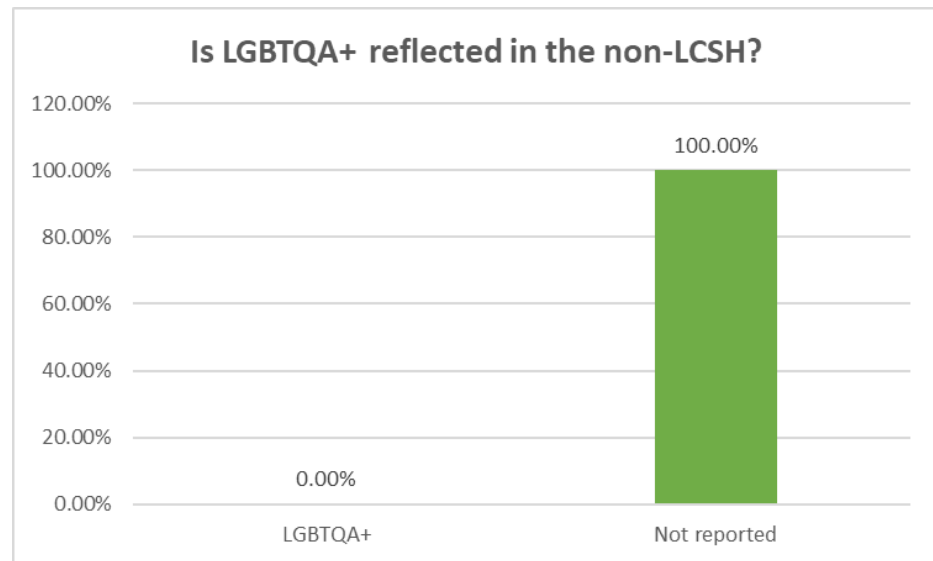
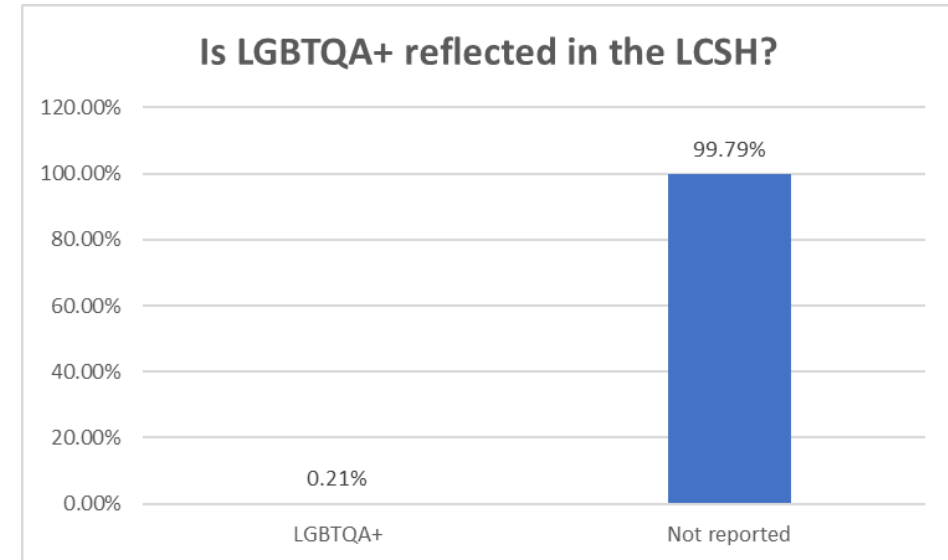




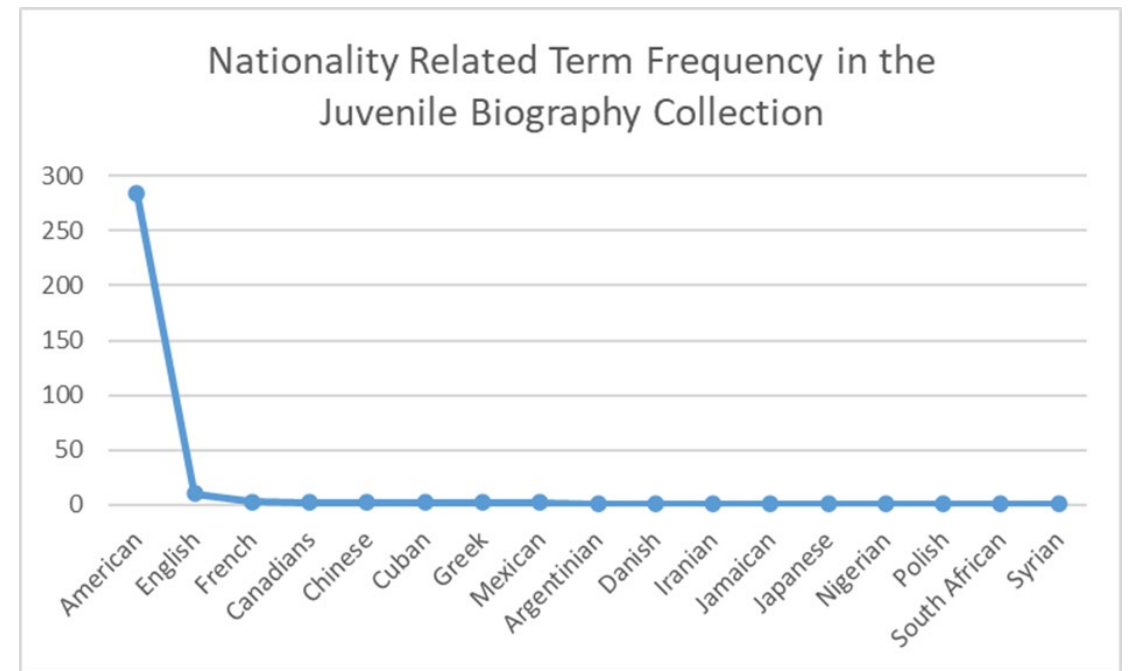
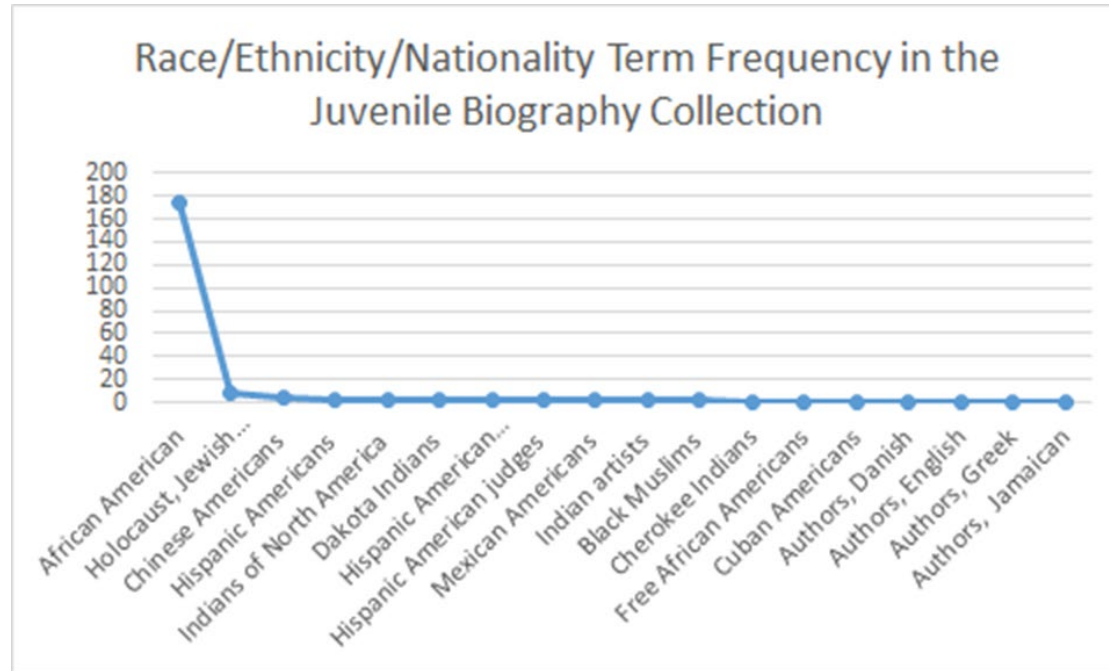
# Survey Results: Statistical Analyses



LCSH for Race/Ethnicity in the Juvenile Biography Collection Prior to the Audit		
Types of Subject Headings	Percentage	Number
LC subject headings (650 \0)	58.82%	450
LC subject headings for children's literature (650 \1)	39.74%	304
LC Geographical names (651 \0)	0.52%	4
Geographical names from LCSH for children's literature (651 \1)	0.52%	4
Personal name from LCSH (600 \0)	0.26%	2
Personal name from LCSH for Children's Literature (600 \1)	0.13%	1
Total	100%	765



# Survey Results: Textual Analyses



# Post Audit Metadata Enhancement, Future Options & Plans

- **Local Headings Added**

- **Gender**

- 690 \ \$a Biography \$xGender \$xMale \$9 local

- 690 \ \$a Biography \$xGender \$xFemale \$9 local

- 690 \ \$a Biography \$x Gender \$x Gender neutral \$9 local

- **Ethnicity/Nationality**

- 690 \ \$a Biography \$x Ethnicity/Nationality \$x Chinese

- American \$9 local

- 690 \ \$a Biography \$x Ethnicity/Nationality \$x Mexican

- American \$9 local

- **Race/Ethnicity**

- 690 \ \$a Biography \$x Race/Ethnicity \$x Native

- American/First Nations \$9 local

- 690 \ \$a Biography \$x Race/Ethnicity \$x Latinx/Hispanic

- \$9 local

- 690 \ \$a Biography \$x Race/Ethnicity \$x White \$9 local

- **Nationality**

- 690 \ \$a Biography \$xNationality \$x American \$9 local

- 690 \ \$a Biography \$xNationality \$x Argentinian \$9 local

- **MARC Field 386 (Author/Creator Characteristics) Added**

- Including ethnicity/cultural group, nationality/regional group and gender group values, e.g.,  
386 \ \$m Ethnic/cultural group: \$n eth \$a African Americans \$2 lcdgt

- **Homosaurus Terms Added for Records Concerning LGBTQAI+ People**

- Example: 650 \7 \$a LGBTQ+ artists \$2 homoit

- **Conscious/Reparative Metadata Options**

- Create inclusive local subject headings; Avoid biased LC Subjects (when possible); Submit inclusive terms for consideration as LCSH; Create terms in other platforms (e.g., Wikidata)

- **Future Plans**

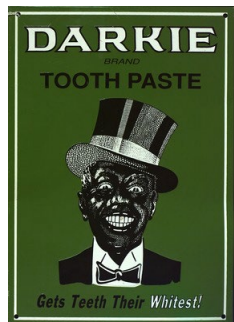
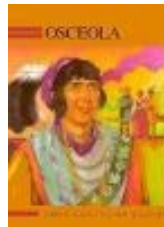
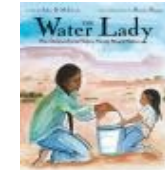
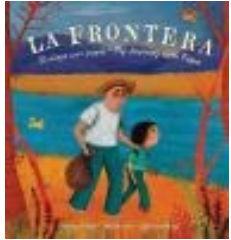
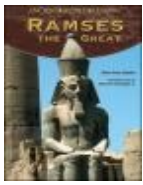
- Continue to promote and practice DEI/EDI cataloging; collaborate with other departments for collection audit for DEI/EDI; research on the impact of inclusive metadata for data discovery and user experience



# Acknowledgements

---

- Kerri Bottorff, Digital Collections Projects Coordinator, University of Central Florida
- Lee Dotson, Interim Department Head, Technology Solutions & Digital Initiatives, University of Central Florida
- Faye Mazzia, Electronic Resources Cataloger Librarian, University of Central Florida
- Peter Spyers-Duran, Special Formats Cataloger Librarian, University of Central Florida
- David Benjamin, Department Head, Special Collections & University Archives, University of Central Florida
- Amy Dovydaitis, Head of Curriculum Materials Center, University of Central Florida
- Kristine Shrauger, Head of Interlibrary Loan and Document Delivery, University of Central Florida
- LTAs, Cataloging Department, University of Central Florida



## Contact

Sai Deng, Metadata Librarian, University of Central Florida Libraries, [sai.deng@ucf.edu](mailto:sai.deng@ucf.edu)

Jeanne Piascik, Head of Cataloging Services, University of Central Florida Libraries, [jeanne.piascik@ucf.edu](mailto:jeanne.piascik@ucf.edu)

# Thank you

