



University of Central Florida  
**STARS**

---

The Rollins Sandspur

Newspapers and Weeklies of Central Florida

---

10-25-1974

## Sandspur, Vol. 81 No. 06, October 25, 1974

Rollins College

Find similar works at: <https://stars.library.ucf.edu/cfm-sandspur>  
University of Central Florida Libraries <http://library.ucf.edu>

This Newspaper is brought to you for free and open access by the Newspapers and Weeklies of Central Florida at STARS. It has been accepted for inclusion in The Rollins Sandspur by an authorized administrator of STARS. For more information, please contact [STARS@ucf.edu](mailto:STARS@ucf.edu).

---

### STARS Citation

Rollins College, "Sandspur, Vol. 81 No. 06, October 25, 1974" (1974). *The Rollins Sandspur*. 1453.  
<https://stars.library.ucf.edu/cfm-sandspur/1453>



# THE SANDPUR

ISSUE 6 VOL. 81

OCT. 25, 1974

## GODSPELL — NOW PLAYING THIS SHOW'S A HIT!

by: FRAN GOLDSTEIN

*Godspell* is a life-affirming experience—a panoramic extravaganza, manifesting musical mastery, creative choreography and endless energetic enthusiasm. In other words, *Godspell* is a phenomenally fantastic production!

Such praising adjectives are scarcely sufficient to describe *Godspell's* expert array of acting, singing and dancing. The constant activity on stage is nearly reminiscent of a three-ring circus, except that a formidably talented cast keeps the audience entranced, moving the mood from general hilarity to the brink of tears with unparalleled skill.

*Godspell* is so good that it would be impossible to give due credit to each member of the cast, chorus and crew for individual performances and a lavish set—besides, half the fun is NOT knowing what is coming next.

Based on the parables in the book of Matthew, *Godspell* is the creation of John-Michael Tebelak and Stephen Schwartz. The script, music and lyrics of the Rollins production are indeed those of Tebelak and Schwartz, but the imagination and creativity of director William McNulty and an extraordinary cast and crew give Rollins' *Godspell* a unique personality utterly different (and better!) than other *Godspell* productions.

Brad Zimmerman as Jesus and Beezer von Hoffmann as John the Baptist/Judas Iscariot infuse pure joy into the performance—the audience is caught up and totally transfixed. Brad's superlative acting and acrobatics combined with Beezer's magic tricks and equally magical rapport with the audience create an unbreakable link between players and viewers. Even at intermission, the audience spirit is sustained by refreshments graciously offered by the chorus.

Settling back for the second act, having finally adjusted to the fast-paced parables, the audience is shortly taken aback. After several minutes of light-hearted capering, Beezer (having metamorphosed into Judas Iscariot) betrays Jesus. The last supper changes the mood for capricious to serious. Each disciple bids Jesus goodbye in a manner so emotionally intense that the audience is electrified. The sudden impact of the imminent death of Jesus hits full force. Waves of shock, pity, fury and horrified shame sweep over the viewer in the best-acted scene of the play.

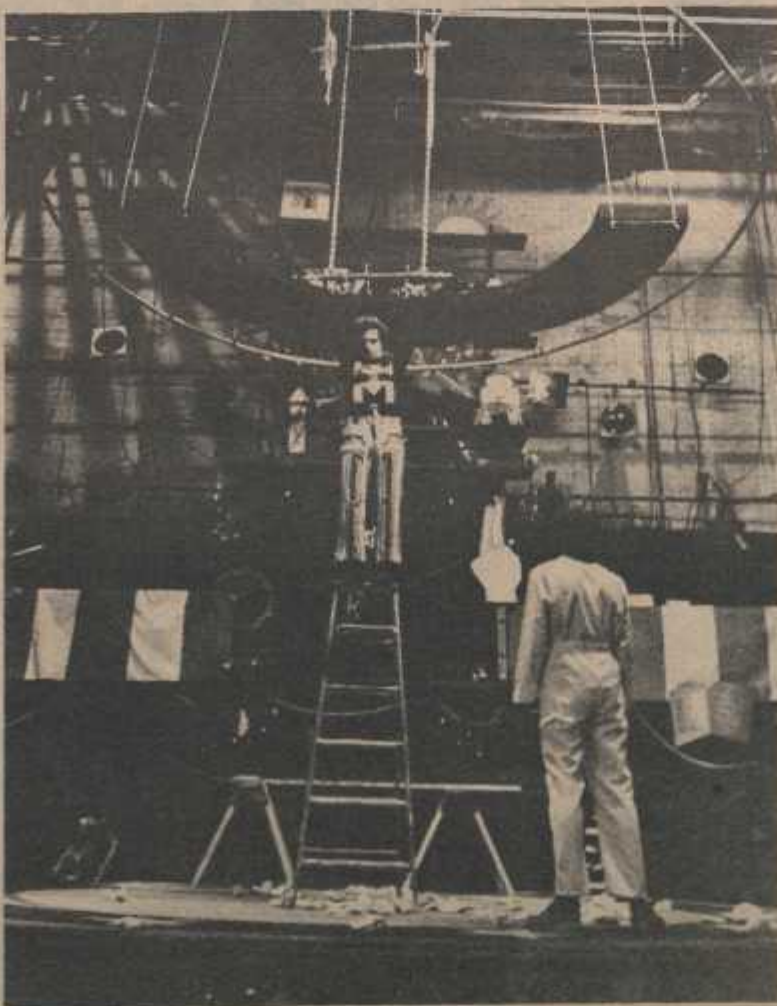
Ending the show, cast and chorus (including a resurrected Brad) join in a rousing reprise of "Day by Day" acknowledging tumultuous applause and a standing ovation.

The last two performances of *Godspell* are Friday, October 25 and Saturday, October 26 at 8:30 p.m. Reservations and tickets are available at the Annie Russell Theatre Box Office for \$2.50. Student subscriptions for all six Rollins productions will be on sale for \$6.00 at the Annie Russell Box Office until October 26.

### PLEASE EXCUSE

... the mistake in last week's issue on the front page. Our publishers inadvertently switched the *GODSPELL* and *VIEW FROM THE BRIDGE* pictures. Human error is possible in any situation, not excluding the publication of a newspaper. Our apologies to anyone who took offense.

THE EDITOR



GODSPELL HELD OVER  
for an additional performance  
Tuesday, Oct. 29  
8:30 p.m.



# CAMPUS NOTES

## The Pub.....What Pub?

"The Pub is coming! The Pub is coming!" "Sure," you groan, "in time for Alumni Weekend, no doubt."

As this paper goes to press, we are only days from the opening of the Pub--at long last! Please control that watering mouth, those gleaming eyes--and read this message:

Much work has gone into getting a Pub on the Rollins campus. Last year students Tom Shields and Alan Burnett presented the first formal Pub proposal to Mr. Zellers, the Vice President of the college. Beginning last spring and continuing throughout the summer, there has been a seemingly endless progression of meetings, discussing everything from physical improvements, hours and regulations, to the brand of beer which will be served. Ideas were exchanged between students and

administrators.

Now, as it comes closer to that first draught of ice cold beer, please remember a couple of things:

The pub is for the express delight of the Rollins community; therefore, a non-Rollins patron must be the guest of an ID-holding, Rollins student.

Please also remember that Florida State Law prohibits alcoholic beverages to be possessed or consumed by anyone under eighteen years of age. Occasional spot checks will be made. In other words -- if you are not 18, PLEASE do not attempt to drink beer at the Pub; it might very possibly result in an unhappy ending. . .to the Rollins Pub.

However, for those of you 18 and over -- drink and be merry!

## coffee, donuts & dr. critchfield.

Dr. Jack Critchfield held the first President's coffee in the pub-to-be (Down Under) Wednesday, October 23 at 11:00.

President's Coffees are one of the nicer traditions of Rollins, adding to its small-school atmosphere. The meetings, complete with free coffee and donuts are conducted on an informal question and answer basis. President Critchfield fielded questions on the ever famous (or infamous) topics of security, the library, the Guild rumors (the organization was disbanded, but no one was expelled from Rollins), the Health Center, the parking lots, the tuition increase (Rollins tuition and board are definitely going to be raised to a total of \$4200.00 a year) and even the telephones. Rollins will soon be instituting direct dialing, and a few lines will be available for student use.

After an hour, the President's busy schedule necessitated his departure.

## RUSH- A JUNIOR'S DILEMMA

by: LAURIE PAINE

Along with the rapid succession, . . . deadly drinks, throngs of perspiring bodies, quickly forgotten names - all of which after two years you have been programmed to, this feeling of powerful unity within the sorority, overwhelms you to the point of disunity. The maze of new faces challenges your individual security and enhances your vulnerability. If I may be so bold as to borrow an analogy from our reigning president, Freshmen are to be courted from all sides, and the universally acclaimed Rollins Rush parties are only a means of constructing the foundation for a good marriage.

Parties become pressure pots. Thank God for those fruitful spirits. Freshmen know not of their aid to the other side, for the art is an acquired, nurtured one. Yet, here your loyalty presents itself in all its glorious intensity. It's a group effort, either graced or injured by your own individual participation. Questioning seldom renders itself superior to the routinely mundane, and silence creates its own frustrations. And so it is, weekends on end.

On the other side, there prevails equal if not

Recycling, environmental awareness and information were topics at the organizational meeting of the Rollins Environmental Club. The group is to be entirely student-run, said Dr. Scheer, "I'm only acting as a catalyst."

The club is open to all students, and should be of interest in many disciplines: environmental concerns pop up in economics, sociology, psychology, and of course the various sciences. The next meeting will be held Tuesday, October 29 at 6:30 p.m.

### CREATIVE EXCHANGE

Tues. Oct. 29th 8:00 p.m.

Woolson House

B.Y.O. Poems, Writings

more confusion when finally deciding. An independent individual at least is the pursued, not the pursuer. Impressions work both ways. Is this girl our Kappa Tea or is she more suited in Kappa Gown? Then, about those other groups -- Fireside Musicals, Alphabets, the Newsmen, and the Chic-O-Dees? Maybe one of these creates competition, or is it simply salvation from the final act. It's all important that the peg shall fit the whole.

It happens when females, being victims of their very nature, are gathered together for a singular purpose of making decisions, conflicts arise. Agreement is a long, hard battle. Wits are shattered along with emotions and occasionally friendships. Who of these darling creatures deserves us? Mothers and friends make themselves known on the other side as well. Such fun - I've never known.

So, minor complications are not unique in this "unique experience." It is nothing more than a process of elimination. Confusion only intensifies the game. But, at last, hopefully our efforts will be rewarded in happiness and security for all, this being the goal designed by our phenomenal Greek system.

Ah -- to be or not to be, that is the question.

## Environmental Studies Club

## rush notes

Rush sign-up for women interested in Greek rush will be Tuesday, October 29th in McKean lobby 5:00 p.m. to 7:00 p.m.

## recruits for registration

Mr. Backsheder is now accepting applications from students who wish to help with registration. Student helpers will receive advantages in arranging their own schedules.

## Calendar

<b>SUNDAY</b> 9:45 a.m.  4:00 p.m.	<b>OCTOBER 27</b> Chapel Service, Dr. Wettstein officiating. Two-piano Recital (Mrs. Carlo and Mrs. Gottschalk). Crummer Aud. Admission.
<b>MONDAY</b> 4:00 p.m.	<b>OCTOBER 28</b> Senate Meeting. Bush 108.
<b>TUESDAY</b> 3:30 p.m. 8:00 p.m.	<b>OCTOBER 29</b> Soccer, vs. St. Leo College Creative Exchange Woolson House BYO poems, writings etc. "Godspell" (one-day hold-over)
<b>FRIDAY</b> 7 & 9 p.m.	<b>NOVEMBER 1</b> Student Center Film, "Fritz the Cat" Bush Aud.
<b>SATURDAY</b> 2:00 p.m.  8:30 p.m.	<b>NOVEMBER 2</b> Fall Film Festival, "Trails to the Great Smokies", LeRoy Crooks narrating. Bush Aud. Admission. Asolo Theater will present "The Mistress of the Inn" Student Rate Available

Take time to see the French display on the first floor of the Mills Memorial Library. Dr. Dawson's (collection of classics)

# the sandspur staff

EDITOR-IN-CHIEF - KATE D. CURTIN

MANAGING EDITOR - MARGARET PRICE

Assistant Managing Editor - Fran Goldstein

Advertising Manager - Kim Reniska

### GENERAL STAFF

Shelley Gould  
Ellen Silver  
Laurie Paine  
Gail Smith  
Roxwell Robinson  
Susan Curran  
Beth Lincks  
Melissa Morris  
Kim Flagstad  
Jeff Storer  
Grover Gardener  
Skip Yackopec  
Lisa Stephens  
Fred Lauten

### EDITORIAL STAFF

Amado Bobadillo  
Bob Bradley  
Lynn Wadsworth  
Mary Alice Bymes  
Alan Boone

### PHOTOGRAPHERS

Christy Weurtenbacher  
Tony Waits  
Lori Wigor  
Blair Byrd  
George Hudnutt  
Richard Reinhart

### LAY-OUT STAFF

Sharon Ruvane  
Susan Nappa  
Carol Schubert  
Blair Byrd

### FRIENDLY CONTRIBUTORS

Dr. Jack Critchfield  
N. Ronald Pease  
Arnold Wettstein  
Tommy Newton

### FACULTY ADVISORS

LaRue Boyd  
Alan Nordstrom

Published weekly, except vacations and holidays, by Rollins College Winter Park, Florida 32789, by Rollins College. Publication office in Carnegie Hall, first floor. Used in second-class matter November 4, 1925, at the Post Office at Winter Park, Florida 32789, under the act of March 3, 1879.

Second-class subscription rate at \$7.50 per year. The opinions expressed in the Sandspur do not necessarily express the views of the Sandspur staff, the students, faculty, and/or administration of Rollins College.



# SPORTS ROUNDUP

## Soccer...

As someone well versed in athletics once said, winning is knowing what you can do, preparing yourself to do it and then going out and doing it. Last Tuesday, the Rollins College Tars did just that by defeating the University of South Florida 2-1 at Tampa.

Fighting injuries, their inability to score goals and a lot of bad luck, the Tars were not to be denied. Even though they were coming off two straight defeats, the Tars were up for the match and finally played with intelligence, desire and poise that they have been searching for all season.

Things really looked dim for the struggling booters in the early moments of the contest, as South Florida scored with only three minutes and thirty seconds gone in the match. South Florida scored when mid-fielder Larry Bryne rifled an indirect kick past the Rollins defense from 20 yards out.

Down, but refusing to die, Rollins came roaring back by pressuring the South Florida defense. After having numerous shots hit off the goal post and narrowly missing the goal, the Tars finally knotted the score. Junior Marty Wiman tied the game for Rollins when he scored from twelve yards out midway through the first period. He scored on a pass from Enrico Sessarigo and placed a perfect shot away from the South Florida Goalie.

Moments later Rollins scored what later proved to be the winning goal. The winning tally developed up the right side which saw Bill McCaimont slip past the South Florida defender, and cross a perfect ball to Enrico Sessarigo. Enrico booted it in from 15 yards out to put Rollins ahead for goal of 2-1.

Going against a strong wind the second half, the Tars came out defensive minded. Coach Howell inserted an additional back to half counter the South Florida attack. The name proved to be a very wise one as the Rollins defenders turned away the South Florida threats time after time. Under constant pressure the entire second half, the Tars were able to hold the Brahmas at bay by an entire team effort.

South Florida had some golden scoring opportunities, but Rollins Goalie, Duke Marsh played by far his best performance of the season. Duke made a game saving save midway through the second half, when he jumped high to deflect a hard shot from a South Florida forward. His save was just one of seven key saves that he made.

Both Rollins and South Florida had thirteen shots on goal and both teams managed five corner kicks apiece.

The win evened the Tars record to 4-4-1, and marked the first time ever that Rollins has beaten the University of South Florida in a regular season match. It couldn't have come at a more convenient time for the struggling booters.

Rollins next match will be here Tuesday, October 29th against St. Leo before embarking on a road trip to Alabama and Georgia next weekend.

## Golf...

The Rollins College women's golf team posted a fourth place finish in the recent Florida State University Invitational played in Tallahassee by firing a 652 total for the two-day, four-ball tournament.

Heading the list of eleven schools was Miami Dade Community College with a 622 followed by the University of Florida (642), the University of Alabama (643) and Rollins.

Rollins freshman Terrie Thereson firing a 76-82-158 led all Rollins golfers with Pam Clark (163), Kay Kennedy (164), Sallie Reyston (168) and Nancy Platzer (171) all following close behind.

Martha Jones of Alabama won the individual title with a 75-73-148. Florida's Donna Marten was a close second with a 77-76-153.

The Rollins women will now prepare for this year's Lady Gator Tournament set for November 17-19 in Gainesville.

## Tennis...

Last Saturday, the Rollins Womens Tennis Team defeated F.S.U. in Tallahassee, 16-2. Those in the top six, who all won their matches easily were Rayni Fox, Linda Wert, Nancy Jeargen, Ann Flint, Bev Buckley, and Candy Harris. This was the girls only fall match and if this is an indication of their performance this spring they will be once again one of the strongest ones in both the state and the nation.

It has just recently been announced that Rayni Fox holds the No. 1 ranking in the country for 18 and under girls.

## SOCCER GAME

Oct 29  
Tars v. St. Leo's  
at home

## Red Cross Standard First Aid Course

Nov. 5th thru Nov. 26th

Tuesday  
& Thursday nights

7:00 p.m. to 9 p.m.

Registration

Call extention

2366, 2498 or 2429

NO CHARGE!

## Mixing You Up

by: GROVER GARDNER

Now that the air-con has been shut off at various points about campus, what with the advent of cooler (not much) weather and the moosoon season, there is considerable danger of students melting in their rooms, or while waiting in line for Beans. I might suggest a special clean-up squad to mop up melted students (and they do make quite a mess!) before others are discouraged from taking advantage of this damp "season without air-con" to clear their sinuses before the de-humidifiers go on again next spring. A melting student can be quite a deterrent, particularly to freshmen. Let's not have this seasonal phenomenon discourage the more active among us from our appointed rounds.

The above has little or nothing to do with the rest of this article, which will discourse on the subject of non-smokers.

Non-smokers are detrimental to the health of smokers. I am talking about cigarettes here. Let's not have any sniggering from the back row. Non-smokers have a bad habit of pestering smokers to near-death. Nothing is more distracting to one enjoying a morning cigarette than to have some good-for-nothing non-smoker come in and harp on the evils of smoking. My sister, who happens to be a nurse, once did a somewhat nauseating imitating of a person dying of tuberculosis, in an attempt to discourage me from smoking. It was so horrible that when it was over I had to light up a butt to fortify myself. Bleeessssss.

Now non-smokers have that added grapefruit to rub in the faces of all smokers, and that is the government health warning on the side of each and every cigarette packet. Whoever came up with that idea had the smokers' hell in mind. Every non-smoker in the bunch holds the surgeon general's choice vocabulary over my head when I light a cigarette.

I get a great deal of pleasure out of smoking. I am always on the look-out for any new brands or gimmicks that might enhance my smoking pleasure. Cigarette holders, or instance, are a great deal of fun. They can be wielded with great aplomb and daring. The bolder the statement, the haughtier the wave of the holder, they say. Is that really what they say?

Flavored cigars and the like are also a treat for the serious smoker. Vanilla, cherry, etc. are great flavors. Despite the fact that these brands are usually the cheapest and worst cigars on the market, with some sleazy candy-flavor to hide their poor quality, they are still best-sellers around the world.

And so, equipped with cigarette holder, and amply stocked with flavored cigars, I slip into a casual pair of khakis and a Schlitz tennis visor and set out to find adventure amongst the multitudes of fraternity and sorority parties taking place about the campus. At the first party, I wield my holder so daringly that I set a girl's hair on fire. At the second party, the rest of the guests are so offended by the cheap smell of my flavored cigars that the descend en masse and physically eject me from the party. Thus ends my suave evening on the town. I return forlornly to my room, change into my dirty pajamas and read F. Scott Fitzgerald until all hours of the morning.

The "man's brand" is always an attraction to the masculine-conscious smoker. I came across a packet of HOMERUN cigarettes in a drugstore the other day. It had a jaunty turn-of-the-century print of a pair of ball players, dressed in the period garb, on the front. It had such a manly appeal, such a sporty and back-to-the-good-old-smokes aura to it that I bought the pack without question. Laughing mightily over my marvelous, kitschy find, at the same time so redeeming in its implied values, I never stopped to think what they might taste like. They turned out to be unsmokable. They were noxious. I have them pasted on the wall in the hope that someday a security guard will burst into my room and, spying them, will think them some clever guise for the weed, and spirit them away with a firm reprimand to never be caught with something like that again. And I will gladly heed his advice.

And with that episode in mind, we return to the dilemma of melting students. With a witch-of-the-west-like cry, we disappear into the pavement. By the way, I am having a sale on life-size refrigerators for those who wish to hibernate until the air-con comes back on. Don't be caught in a puddle.

## "POPPYCOCK!"

Oliver sneered superciliously.



"Insurance at my age? Time enough when I'm old and gray and 35." Foolish, foolish Oliver. The time to invest in a policy will never be better than now. You're going to need insurance someday soon... while you're young and in good health, it'll cost a lot less. Wondering about your financial future can be a drag—until you figure out what to do about it. That's where we can help. "Phone or write me today and take advantage of being young."

**PROVIDENT  
MUTUAL**

**TED NYE,**  
Campus Representative  
1001 S. Kentucky Ave.,  
Winter Park 647-2784

## ROLLINS MIXED DOUBLES CHAMPIONSHIPS BENEFIT FOR ROLLINS CHAPEL STAFF FUND

All matches  
Pro Sets  
USLTA Rules  
9 Point  
Sudden  
Death Tiebreaker

Tournament  
Begins 10:00 A.M.  
Saturday - Nov. 9th

Entry Donation  
\$3.00 per player

No team entries accepted, formation of doubles teams will be by tournament Committee Draw.  
No Varsity or J.V. male or female players will be teamed together

Faculty - Staff - Students invited

JOIN THE FUN - Meet New Friends - You May Draw a Winner





# Do You Remember the Chapel Staff?

by: LISA STEPHENS

Yes, credit is given where credit is due; or is this really the case? Too often a group or those within it rarely receive the acknowledgment that is due them. Sadly enough this is the case with the Chapel Staff here at Rollins. Generally when the students consider the Chapel Staff they think of it only in terms of the Student Loan Fund which allows any student to borrow money up to the amount of twenty-five dollars that is repayable within a six week period. However, the Chapel Staff is responsible for other numerous worthwhile projects and it is a shame that it is so often associated with nothing more than the Student Loan Fund. The want of knowledge about the Chapel Staff and its services creates an especially sad situation since the many charitable donations made by the Staff are made in the name of the students, faculty, and staff of Rollins College. Meanwhile too few of the Rollins community have any idea of the various charities donated to or even realize that these contributions are made in their name. So it is high time that some well deserved public recognition was given to the Chapel Staff to applaud their activities and to enlighten those ignorant of these activities. It is generally unknown that the Chapel Staff establishes as annual goals the achievement of the fund raising ambitions that will provide the money so dearly needed by every charity. Moreover, it would be a surprise to many to discover that the Chapel Staff contributes to charities that are not only local but worldwide as well.

On the local level the community service committee of the Chapel Staff organizes a monthly project for the general good of community. These endeavors include the sponsorship of the blood drives held annually on this campus and the collection of all donated goods for the food baskets given to the needy at holiday time. Furthermore, on a nearly weekly basis the community service committee regularly visits the Sunland Hospital to play with the mentally and physically handicapped children who really thrive on such attention. This service committee also does the same service at the Welbourne Avenue Day Care Center where the members are currently organizing a Halloween party for some sixty-odd children there. In addition, the community work of the Chapel Staff extends to the Depugh Nursing Home that exists in the area for the elderly of the black community. For the benefit of the home the Chapel Staff makes visits, sponsors parties and collects goods to be given at holiday time. The Staff also donates the ever useful amounts of money that help to fulfill many needs like those for medicine. Moreover, the Staff contributes money to the Eatonville Day Nursery and Kindergarten and the Welbourne Avenue Day Care Center that helps to keep both institutions in operation and of which there is never enough. Meanwhile, both the members of the Staff as well as those of the community service committee can be depended on to personally go by the nursery as well, the Day Care Center to play with the children and give them the parties that do so much to brighten up the holiday times. Also, the Staff donates money to the Newman Center for the work it does for the migrant camp in the Zellwood community that involves a recreational programs on a weekly basis for the preteen and teenage migrant children. Meanwhile, the Chapel Staff makes its own separate contribution to the Zellwood migrant community by giving financial support to the day care nursery which helps to solve the problem of daytime care for the migrant children whose parents are often in the fields until seven or eight at night. This nursery is not only important in providing daycare that offers hot meals but it is also significant in being a fulcrum for other needed improvements in this migrant community.

On the worldwide level the Chapel Staff raises enough money to sponsor an international student with a scholarship for one year of study here at Rollins. Along with the scholarship this student, who in the past has hailed from such countries as Sweden, Norway and Germany, is given an allowance for travel expenses and money for books and supplies. Besides this, money is also donated by the Staff to the World University Service for the purpose of assisting underdeveloped countries develop their educational resources. Such relief may be given on a long term or emergency basis but with the same purpose of helping any needy country found colleges and universities. In addition, the Chapel Staff contributes money to a foster parents plan through which the Staff takes on the care of two needy international children by

providing financial aid to the families. This aid enables the children to go to a school that will give them an education and teach them a skill. Furthermore, this financial assistance helps to pay for food and clothing as well as the school fees of these two children who are currently of Ecuador and the Philippines. In addition to this, the Chapel Staff raises enough money to donate to the Salvation Army while setting aside an ample amount for the flower fund which pays for the flowers sent to hospitalized staff, faculty and students.

Certainly this list of charities is impressive and as a matter of fact these particular charities constituted the 1973-74 goals of the Chapel Staff for which the Staff raised almost five thousand dollars last year. Obviously, the Staff's donations involve large sums of money

which the Staff must raise solely through its own fund raising activities. Moreover, one such function is coming up with the Chapel Staff's mixed doubles tennis tournament by charging a minimal fee of only three dollars for every player to enter and all proceeds will go to the Chapel Staff Fund. All Rollins staff, faculty and students are invited to enter and in order to insure fairness to both players and spectators the tournament committee will decide on the make-up of the doubles teams and will allow no team entries nor will it team together any varsity or junior varsity players. Yet, the important idea to remember is that this tournament is based upon the notion of fun and charity and not on any serious or competitive desire to win. So if you play, bring your racket and enter, or better yet,

encourage a friend to do the same. However, even if you are not a Chris Evert or a Stan Smith on the courts, at least come by and see your professors and fellow students rally for the good of the Chapel Staff and do your share and patronize the food stands. So why not do something different that day and forego that long drive to New Smyrna. Instead take a brief walk over to the tennis courts, buy a coke and get in on the fun. Afterall, you will not only have a good time but you will also help the Chapel Staff with a cause that is yours as well as theirs because remember that every one of their donations is made in the name of the students, faculty and staff of Rollins College.

## ORANGE CYCLE WORKS

Finest in Sales + Service  
of Deraileur Bicycles  
Fuji • Nishiki  
Follis • Liberia • Mercla  
Frejus • Legnano

Mon.-Wed.-Fri. 9-6  
Tues.-Thur. 10-7  
Sat. 9-5  
1231 N. Orange Avenue  
Orlando 305-898-8851

## BETCHA CAN'T PICK JUST ONE!



Put your pet feelings up front... wear our T-shirts and share our understanding of animals.

A. Petlovers of the world, unite! Animals have an important place in our lives, right? RIGHT! "PETPOWER"

B. Self-assurance—the essence of catness—"You would do well to surround yourself with persons of my caliber." "EVERY LIFE SHOULD HAVE NINE CATS"

C. Friendliness and optimism—puppy dogs are neat—"I always look for the best in people, and my tolerance is endless." "IF I FOLLOW YOU HOME CAN I KEEP YOU?"

D. Understanding—a hamster is more than just another pretty face—"Beneath this unimposing exterior lies a longing for appreciation." "HAMSTERS HAVE FEELINGS TOO"

E. Tranquility—calm and beautiful, they sail through life gaining admiration without effort—"One can sense my virtues just by watching me." "THIS IS THE AGE OF AQUARIUMS"

F. Self-expression—make your own kind of music—"I'm a real character, and I don't mind telling you about it!" "A BIRD IN THE HAND IS WORTH IT"

G. Patience, silence—Do you believe plants respond to people? We do—"I won't tell you all of my secrets—you must discover them for your self." "SUPPORT PLANT PARENTHOOD"

■ Unconditional money-back guarantee ■ Finest American made shirts ■ Machine wash and dry ■ In stock for immediate shipment ■ All characters are in multi-color on your choice of white or colored T-shirts

Sizes available:

ADULT—Small (34/36) Medium (38/40) Large (42/44) X-Large (46/48) price \$4.95  
CHILD—Small (6/8) Medium (10/12) Large (14/16) X-Large (18/20) price \$3.95

Mail to: petprojects, inc.

716 N. Main Street, Kissimmee, Fla. 32741

Qty.	Style (A,B,C,D,E,F,G)	Shirt Color*	Sizes		Price
			Adult	Child	
		White			
		Blue			
		Green			
		Yellow			
		Orange			

\*Color denotes T-shirts

Total \$

Name \_\_\_\_\_

Address \_\_\_\_\_

City \_\_\_\_\_ State \_\_\_\_\_ Zip \_\_\_\_\_

Florida residents add 4% sales tax. No C.O.D.'s. © 1974 Petprojects, Inc.